



# Quarterly Statistical First Release

**Publication date:**  
27<sup>th</sup> January 2011

**Next Updated on:**  
31<sup>st</sup> March 2011

**Reference:** DS/SFR9

**Coverage:** England

**Theme:** Children, Education and Skills

**For further information contact:**

**Data Service: Service Desk**  
[servicedesk@thedata-service.org.uk](mailto:servicedesk@thedata-service.org.uk)  
0870 267 0001

**Or view our web site at:**  
<http://www.thedata-service.org.uk/statistics>

**Lead Statistician:**  
James Brennan  
[James.Brennan@bis.gsi.gov.uk](mailto:James.Brennan@bis.gsi.gov.uk)  
0207 215 1868

Department for Business, Innovation  
and Skills,  
Level 2,  
1 Victoria Street,  
London,  
SW1H 0ET

© Data Service 2011  
Publication reference number  
Skills Funding Agency P - 110001

## Post-16 Education & Skills: Learner Participation, Outcomes and Level of Highest Qualification Held

- 1 This is a Department for Business, Innovation and Skills (BIS) and the Data Service Statistical First Release (SFR), and updates information published on 16<sup>th</sup> November 2010. It includes information on government-funded<sup>1</sup> participation, achievement and success rates for post-16 education<sup>2</sup> (excluding schools and Higher Education) in England, between 2005/06 and 2008/09.
- 2 The SFR includes near-final data for the 2009/10 academic year, and provisional data for the first quarter of the 2010/11 academic year. This data will be revised in the March 2011 SFR, where final data for the 2009/10 academic year, and revised data for the first half of the 2010/11 academic year will be published.
- 3 It shows key statistics on the level of highest qualification held by adults in England from 2001 to 2009, calculated from Labour Force Survey (LFS) data. These include attainment rates for specific priority groups of adult learners in the population that are of key interest within BIS and the Skills Funding Agency.
- 4 This SFR also shows the number of vocational qualifications awarded in the United Kingdom, as collected by the Office of Qualifications and Examinations Regulation (Ofqual).
- 5 A new, 'Key Further Education Statistics Summary', is included on page 3 of this Release.

<sup>1</sup> Covering the Skills Funding Agency and the Young People's Learning Agency.

<sup>2</sup> Post-16 education includes provision delivered in FE organisations, sixth form colleges, independent training organisations, local authorities and other providers. This includes programmes such as Apprenticeships.

## CONTENTS PAGE

### Statistical Commentary

Key Headlines: Learner Numbers In 2009/10.....	Page 3
Glossary of Key Terms.....	Page 4
Total Learner Participation and Achievement in 2009/10.....	Page 5
Apprenticeships.....	Page 7
Learner Responsive Learning.....	Page 8
Other Employer-Based Training.....	Page 9
Skills for Life.....	Page 10
Adult Safeguarded Learning.....	Page 11
University for Industry.....	Page 11
Success Rates.....	Page 11
Headlines for Provisional 2010/11 Data.....	Page 13
Changes Included in This SFR.....	Page 14
Changes to be Included in The Next SFR.....	Page 14

### Supporting Data Section

Supplementary Tables.....	Page 15
Related National Statistics Releases.....	Page 15
Other Related Statistics.....	Page 16
Further Education Statistics for Other Countries in the UK.....	Page 16

### Notes

Issues with Comparing Data Across Academic Years.....	Page 16
Scope.....	Page 18
Data Definitions.....	Page 19
Publication Cycle.....	Page 19

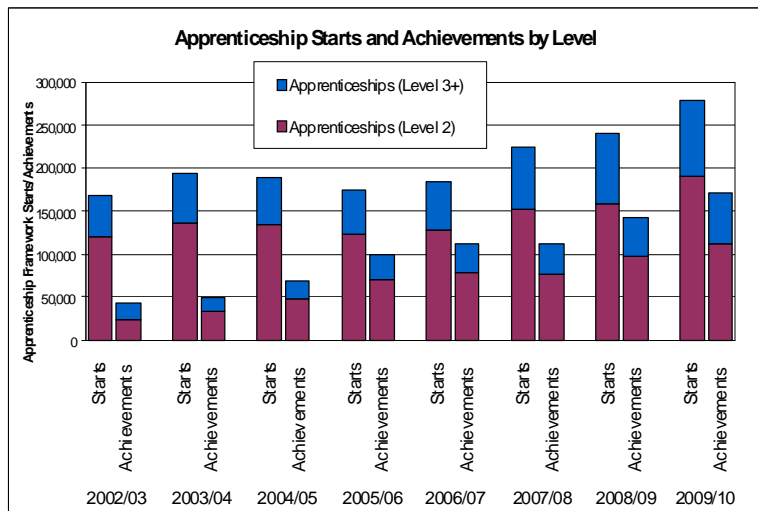
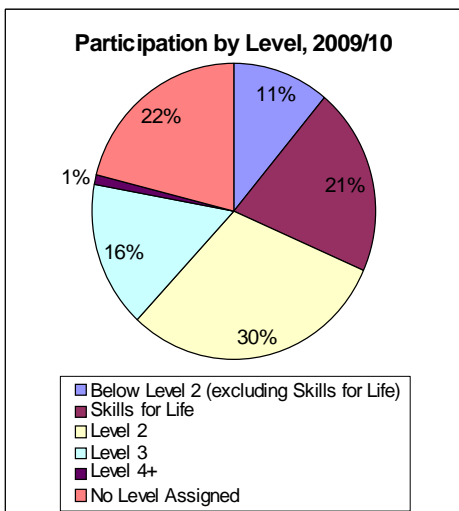
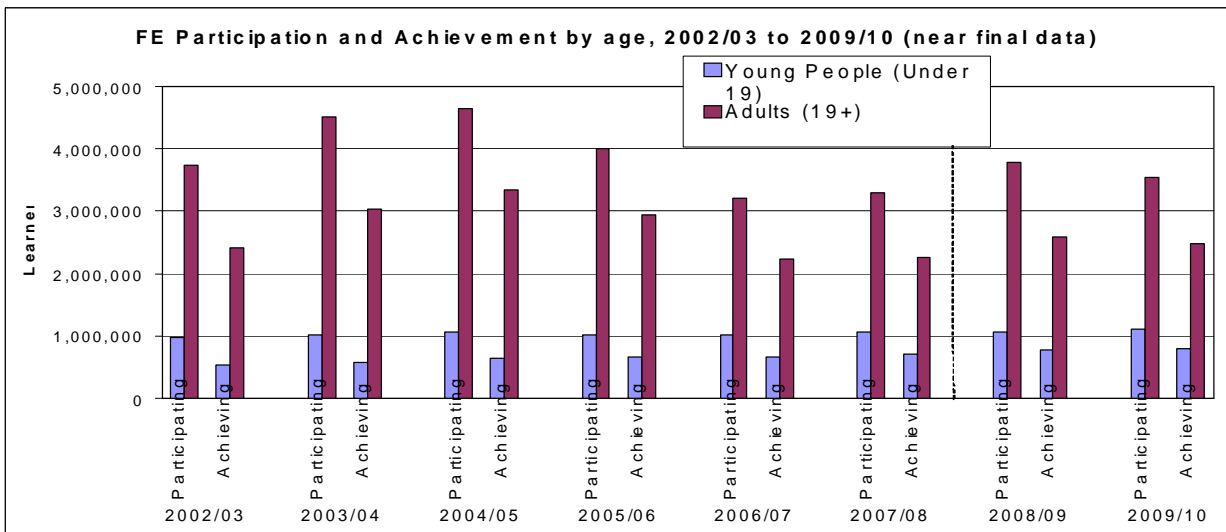
<b>Table Guide</b> .....	Page 21
--------------------------	---------

<b>Table Footnotes</b> .....	Page 22
------------------------------	---------

<b>Tables</b> .....	Page 24
---------------------	---------

### Key Further Education Statistics for England, 2009/10

FE and Skills Demographics	Apprenticeships	Learner Responsive	University for Industry	Train to Gain	Adult Safeguarded Learning	Total	OF WHICH: Skills for Life
Under 19	38%	40%	2%	-	1%	24%	37%
19 - 24	43%	14%	19%	15%	7%	17%	20%
25+	19%	46%	79%	85%	91%	59%	43%
Female	47%	54%	46%	49%	75%	55%	53%
Male	53%	46%	54%	51%	25%	45%	47%
Learning Difficulty	10%	16%	11%	5%	11%	12%	16%
No Learning Difficulty	90%	78%	88%	93%	76%	82%	80%
Not Known	1%	6%	1%	2%	12%	6%	4%
White	92%	77%	77%	85%	81%	80%	74%
BME	7%	21%	23%	14%	15%	17%	24%
Not Known/Not Provided	1%	2%	1%	1%	4%	2%	2%
<b>Total</b>	<b>491,300</b>	<b>2,247,400</b>	<b>153,800</b>	<b>846,900</b>	<b>748,200</b>	<b>4,621,300</b>	<b>1,428,400</b>



Level of Highest Qualification held, Labour Force Survey				Success Rates in Further Education			
				2007/08	2008/09	2009/10	
Year	Level 2 +	Level 3 +	Level 4 +	<b>FE Provision</b>	<b>80.2%</b>	<b>80.6%</b>	<b>80.7%</b>
2006	71.7%	52.3%	32.2%	Skills for Life	74.2%	75.5%	74.7%
2007	73.0%	53.9%	33.3%	Full Level 2	72.7%	74.4%	76.5%
2008	73.9%	54.4%	33.6%	Full Level 3	71.6%	72.9%	76.0%
2009	75.6%	55.9%	35.3%	<b>All Apprenticeships</b>	<b>63.9%</b>	<b>70.9%</b>	<b>73.8%</b>
				Apprenticeships	64.4%	70.4%	73.4%
				Advanced Apprenticeships	62.8%	72.1%	74.8%

Source: Administrative data except where stated

## GLOSSARY OF KEY TERMS

**Further Education and Skills** includes learners who are studying on a course at a Further Education college or training provider, learners who are studying a course within their local community, employees undertaking an apprenticeship, and employees undertaking other qualifications in the workplace.

**Apprenticeships** are paid jobs that incorporate on- and off-the-job training leading to nationally recognised qualifications. As an employee, Apprentices earn as they learn and gain practical skills in the workplace.

An Apprenticeship framework contains the following separately certified elements.

- A knowledge-based element (the theoretical knowledge underpinning a job in a certain occupation and industry, typically certified via a Technical Certificate).
- A competence-based element (the ability to discharge the functions of a certain occupation, typically certified via work-based assessed national vocational qualifications - NVQs).
- Transferable skills (literacy and numeracy) - key skills / functional skills.
- A module on employment rights and responsibilities.

See <http://www.apprenticeships.org.uk/> for further information on Apprenticeships.

**Learner Responsive Learning** covers further education learning delivered mainly in a classroom, workshop, or through distance or e-learning.

See <http://skillsfundingagency.bis.gov.uk/providers/programmes/alr/> for further information on Learner Responsive Learning.

**Other Employer-Based Training** covers a broad range of training – from basic skills to Level 2, Level 3 and other higher-level skills such as Leadership and Management. This training is mainly delivered through the workplace. From 2005/06 this has included the Train to Gain programme. For further information on Train to Gain and Employer-Based provision, please see <http://skillsfundingagency.bis.gov.uk/providers/programmes/ttg/>

**Skills for Life** qualifications are designed to give people the reading, writing, maths and communication skills they need in everyday life, to operate effectively in work and to help them succeed on other training courses. For further information on Skills for Life, please see <http://skillsfundingagency.bis.gov.uk/providers/programmes/skillsforlife/>

**University for Industry** delivers further education courses through the provider learndirect. Learners can study at a local centre, or via the Internet. For more information on University for Industry, please see [www.ufi.com](http://www.ufi.com)

**Adult Safeguarded Learning (ASL)** covers the delivery of a wide range of courses ranging from personal development through to older people's learning, digital inclusion, employability skills, family learning, civic engagement and community development. ASL courses may be offered by local authorities, colleges, and voluntary and community groups, and include activity specifically targeted at deprived areas and disadvantaged groups.

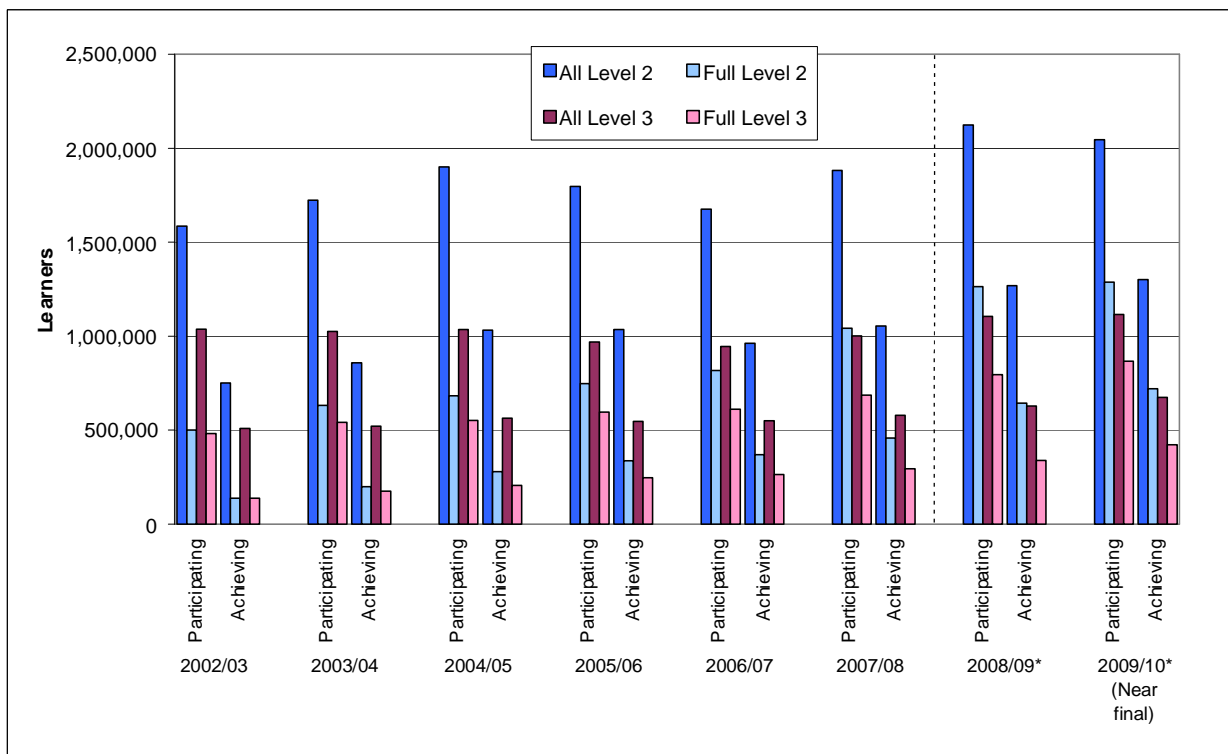
More information on Adult Safeguarded Learning and the different programmes, can be found at:

[http://www.thedataservice.org.uk/datadictionary/businessdefinitions/Adult+Safeguarded+Learning+\(ASL\).htm](http://www.thedataservice.org.uk/datadictionary/businessdefinitions/Adult+Safeguarded+Learning+(ASL).htm)

## Learner Participation and Achievement in Further Education

- 6 Chart 1 below shows the number of learners participating on, and achieving a Level 2 (equivalent to GCSE level) or Level 3 (equivalent to A-Level) qualification in government-funded further education between 2002/03 and the 2009/10 academic year (the academic year runs from 1<sup>st</sup> August to 31<sup>st</sup> July).
- 7 2009/10 is the latest academic year for which we have full-year data, although this is near-final. Data for the 2009/10 academic year will be finalised in the March 2011 Release. Provisional data for the first quarter of the 2010/11 academic year is included from page 13 of this Release.
- 8 Chart 1 shows that the number of learners participating and achieving on Level 2 and Level 3 courses has followed a similar trend between 2002/03 and 2009/10. There has been a gradual increase in learners between 2002/03 and 2004/05, followed by a two year decline. From 2006/07 both participation and achievement on Level 2 and 3 courses has steadily increased.

**Chart 1: Total Learner Participation and Achievement on Key Levels in Government-Funded Further Education**



**\*Note: Learner Numbers for 2008/09 onwards are not directly comparable with earlier years. See paragraph 54 onwards for more information.**

9 Near-final data shows that 4,621,300 learners participated in some form of government-funded Further Education in the 2009/10 academic year [Table 3.1]. This includes learners across all of the learning routes outlined in the Glossary on Page 4 of this Release. This is a decrease in learner participation of 4.5 per cent compared to 2008/09. The main reduction has been in the number of learners participating on Skills for Life and non-Full Level 2 courses.

10 Of these learners:

- In 2009/10, 2,045,700 learners participated on a Level 2 course, a decrease of 3.8 per cent compared to 2008/09. Of these, 1,286,500 learners were studying a full Level 2 qualification, an increase of 1.8 per cent;
- 1,115,200 learners participated on a Level 3 course, an increase of 0.9 per cent compared to 2008/09. Of these, 867,000 learners were studying a full Level 3 qualification, an increase of 9.0 per cent.
- 1,094,800 were aged under 19 years old, an increase of 2.7 per cent compared to 2008/09.
- 3,526,600 were aged 19 years old or over, a decrease of 6.5 per cent compared to 2008/09.

11 Near-final data shows that 3,291,200 learners achieved a government-funded Further Education qualification in the 2009/10 academic year [Table 3.2]. This is a decrease of 2.0 per cent compared to 2008/09. Of these:

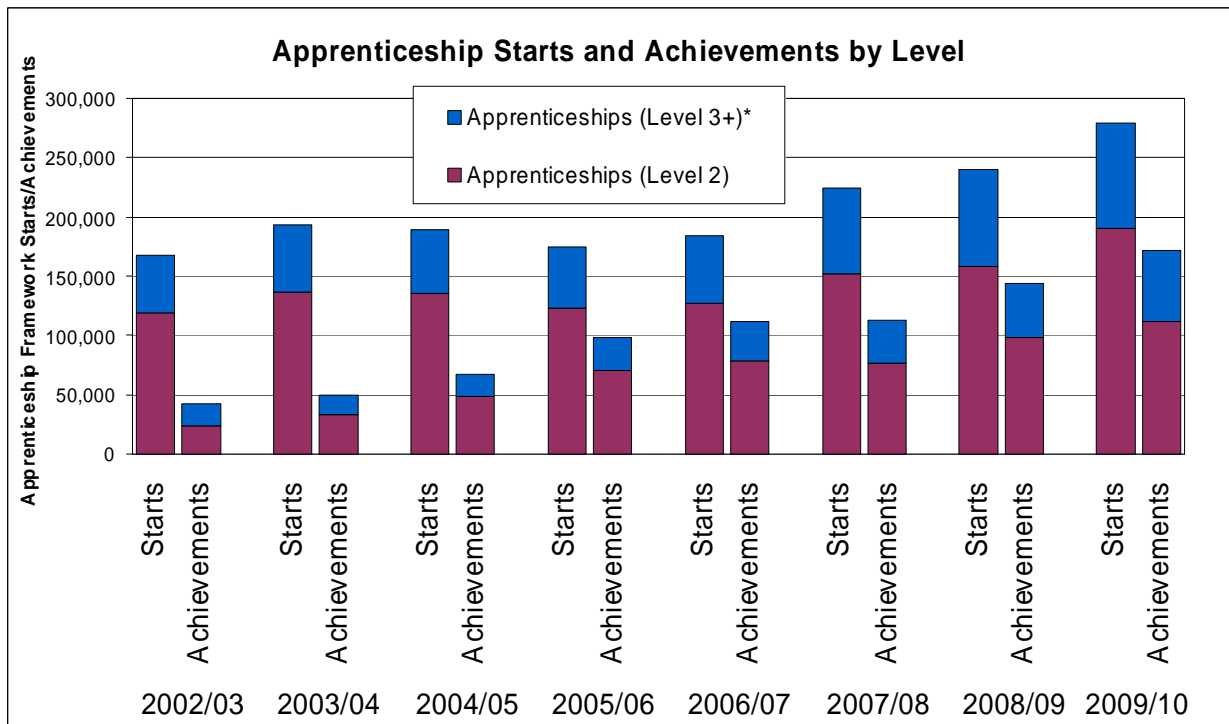
- 1,300,800 learners achieved a Level 2 qualification, an increase of 2.6 per cent compared to 2008/09. Of these, 721,100 learners achieved a full Level 2 qualification, an increase of 11.9 per cent;
- 674,400 learners achieved a Level 3 qualification, an increase of 7.4 per cent compared to 2008/09. Of these, 421,400 learners achieved a full Level 3 qualification, an increase of 24.6 per cent;
- 808,900 were aged under 19 years old, an increase of 4.3 per cent compared to 2008/09.
- 2,482,300 were aged 19 years old or over, a decrease of 3.9 per cent compared to 2008/09.

12 Of the 4,621,300 learners participating in further education in 2009/10 [Table 4]:

- 54.9% were female, 45.1% were male;
- 12.1% of learners declared a Learning Difficulty, Disability or health problem;
- 17.5% of learners were from a Black or Minority Ethnic background (including Mixed, Asian, Black and Chinese or Other Ethnic Group learners);
- 23.7% of learners were aged under 19; 76.3% were aged 19 or older.

## Apprenticeships

**Chart 2: Apprenticeship Starts and Framework Achievements by Level**



**\*Note: Advanced Apprenticeship figures include a small number of Higher Level Apprenticeships**

13 Following a fall between 2004/05 and 2005/06, apprenticeship starts have increased steadily. Apprenticeship framework achievements have increased steadily since 2002/03, both for Apprenticeships and Advanced Apprenticeships.

### Starts

14 The volume of Apprenticeship starts in 2009/10 was 279,700 [Table 8.1]. This is an increase of 16.6 per cent compared to 2008/09. Of these there were:

- 190,500 Apprenticeship (Level 2) starts – a 20.2% increase on 2008/09;
  - 87,700 Advanced Apprenticeship (Level 3) starts – a 7.9% increase on 2008/09.
  - 1,500 Higher Level Apprenticeship (Level 4+) starts – a large increase on 2008/09.
- Learners under the age of 19 started 116,800 Apprenticeship frameworks – a 17.5% increase on 2008/09;
  - 19 – 24 year olds started 113,800 Apprenticeship frameworks – a 34.3% increase on 2008/09;
  - 25+ year olds started 49,100 Apprenticeship frameworks – a 12.1% fall compared to 2008/09.

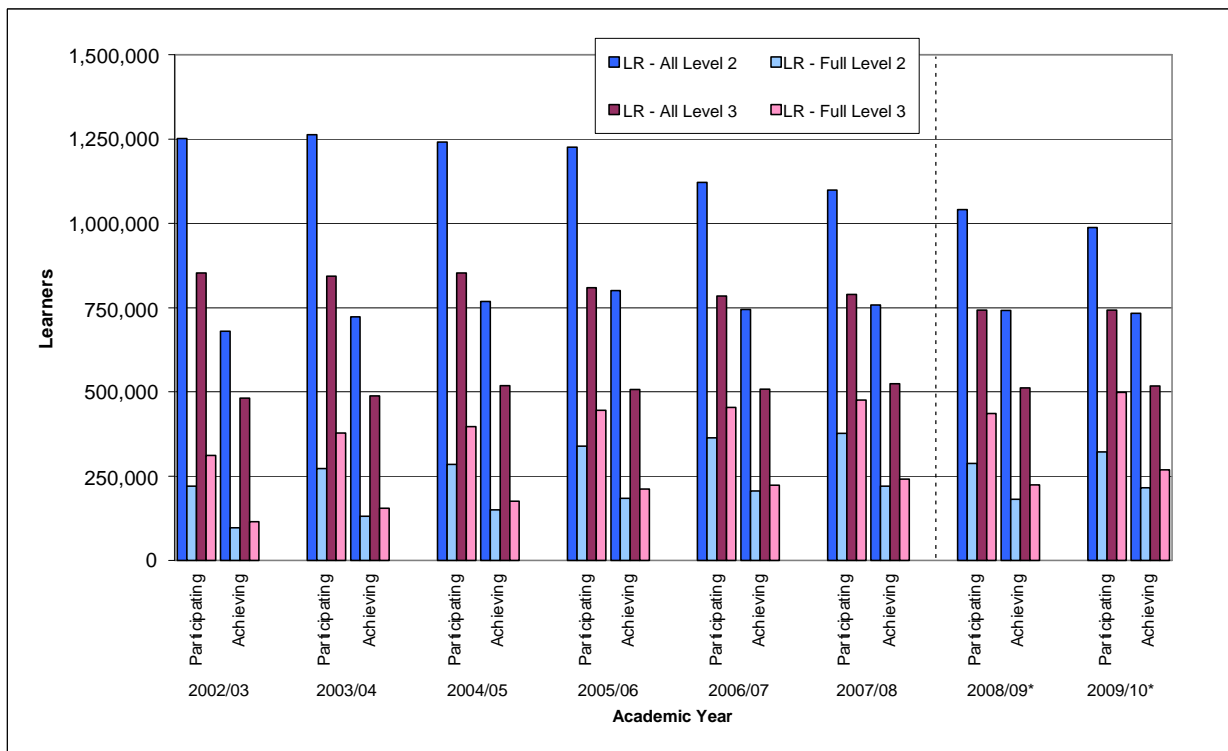
### Framework Achievements

15 The volume of Apprenticeship framework achievements in 2009/10 was 171,500 [Table 8.2]. This is an increase of 19.6 per cent compared to 2008/09. Of these there were:

- 111,900 Apprenticeship (Level 2) framework achievements – a 14.0% increase on 2008/09;
  - 59,400 Advanced Apprenticeship (Level 3) framework achievements – a 31.4% increase on 2008/09.
  - 200 Higher Level Apprenticeship (Level 4+) framework achievements.
- 
- Learners aged under 19 achieved 73,100 Apprenticeship frameworks – a 7.9% increase on 2008/09;
  - 19 – 24 year olds achieved 64,200 Apprenticeship frameworks – a 10.9% increase on 2008/09;
  - 25+ year olds achieved 34,300 Apprenticeship frameworks – almost double the volume compared to 2008/09.

### Learner Responsive Learning

**Chart 3: Learner Participation and Achievement in Learner Responsive Further Education**



**\*Note: Learner Numbers for 2008/09 onwards are not directly comparable with earlier years. See paragraph 54 onwards for more information.**



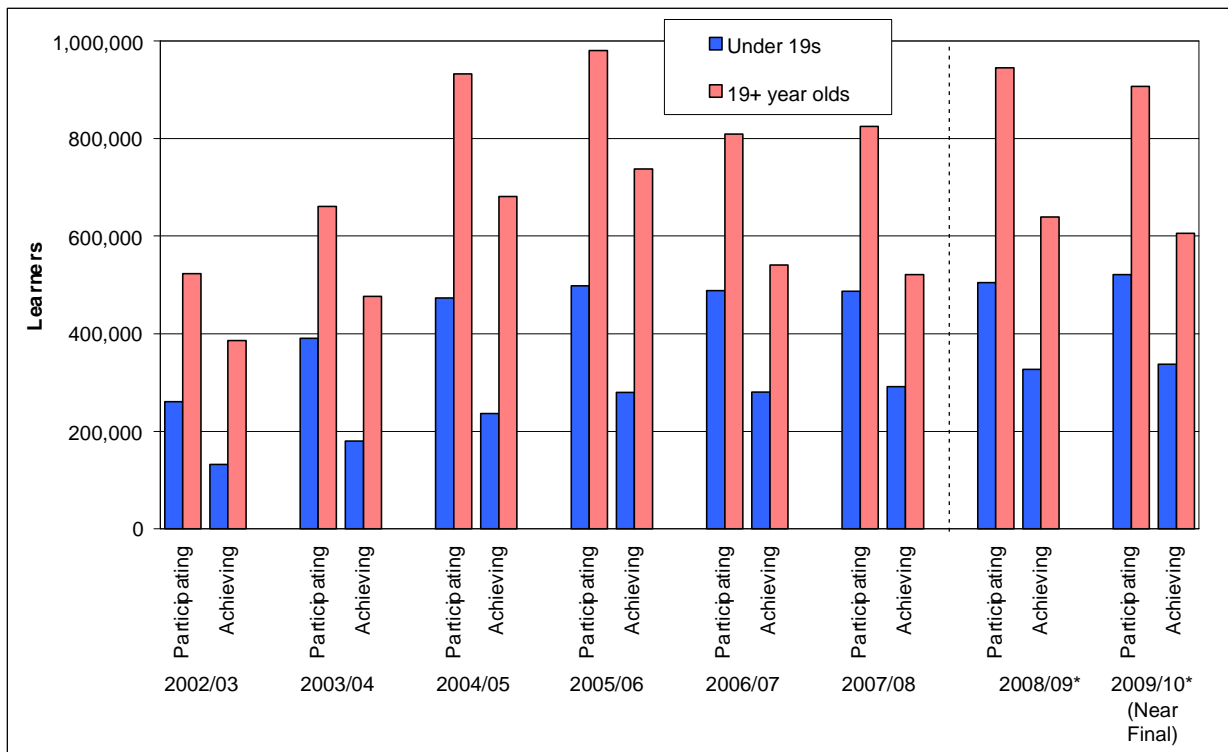
- 16 Learner Responsive learning covers further education learning delivered mainly in a classroom or workshop. Since 2003/04, the number of learners participating on Learner Responsive (LR) Level 2 and 3 courses has gradually fallen. This fall has been offset by a rise in learner starts on employer-based provision over the period, including the Apprenticeship and Train to Gain programmes.
- 17 Despite the reduction in learner participation on Level 2 and 3 Learner Responsive courses, the number of learners achieving a qualification has been fairly consistent over the period. This is due to a steady increase in the further education success rate, meaning that a higher proportion of qualifications undertaken each year have been successfully achieved.
- 18 There were 987,700 learners participating on a Level 2 qualification in 2009/10 through Learner Responsive provision [Table 4]. This is a decrease of 5.0 per cent compared to 2008/09. Of these:
- 450,300 were aged under 19 years old – an increase of 2.1 per cent compared to 2008/09;
  - 537,400 were aged 19 or older – a decrease of 10.3 per cent compared to 2008/09.
- 19 There were 742,600 learners participating on a Level 3 qualification in 2009/10 through Learner Responsive provision [Table 4]. This is approximately the same number of learners as in 2008/09. Of these:
- 464,300 were aged under 19 years old – a 5.1 per cent increase compared to 2008/09 ;
  - 278,300 were aged 19 or older – a decrease of 7.5 per cent compared to 2008/09.

## **Other Employer-Based Training**

- 20 Train to Gain was a national skills service aimed at meeting the needs of employers of all sizes and from all sectors to improve the skills of their employees as a route to improving their business performance. A broad range of training is covered – from basic skills to Level 2, Level 3 and other higher-level skills such as Leadership and Management. As announced in a letter from the BIS Secretary of State to the Skills Funding Agency Chief Executive in June 2010, Train to Gain will be abolished from the 2011/12 academic year. It will be replaced by a new workplace training programme, aimed at supporting smaller employers.
- 21 Train to Gain was launched in April 2006. In 2009/10 there were 574,900 Train to Gain starts [Table 9.1]. Over two thirds of Train to Gain starts in 2009/10 were at Level 2, with a large proportion also at Level 3, or on Skills for Life courses.
- 22 In 2009/10, learners achieved 538,300 Train to Gain qualifications [Table 9.2]. In line with starts, over two thirds of Train to Gain achievements were at Level 2 in 2009/10, with a significant proportion also at Level 3 or on Skills for Life.

## Skills for Life

**Chart 4: Learner Participation and Achievement on Skills for Life Courses**



**\*Note: Learner Numbers for 2008/09 onwards are not directly comparable with earlier years. See paragraph 54 onwards for more information.**

23 Learner participation on Skills for Life courses has fluctuated over the period. Following a steady rise from 2002/03, there was a decline between 2005/06 and 2006/07, particularly for learners aged 19 and over. Since 2008/09 participation figures have fallen slightly for learners over the age of 19, whilst figures for under 19s have stayed broadly flat.

24 1,428,400 learners participated on a Skills for Life course in 2009/10 [Table 6]. This is a decrease of 1.5 per cent compared to 2008/09. Of these:

- 521,400 were aged under 19 [Table 1.1];
- 906,900 were aged 19 years or older [Table 2.1].
- 960,100 learners participated on a Literacy course;
- 881,400 participated on a Numeracy course;
- 201,500 participated on an English for Speakers of Other Languages (ESOL) course.

Note that some learners undertake more than one type of Skills for Life qualification within an academic year, and hence the sum of Literacy, Numeracy and ESOL participation is greater than the total number of learners participating.

25 943,100 learners achieved a Skills for Life qualification in 2009/10 [Table 6]. This is a decrease of 2.4 per cent compared to 2008/09. Of these:

- 337,700 were aged under 19 [Table 1.2];
- 605,400 were aged 19 years or older [Table 2.2].
- 582,200 learners achieved a Literacy qualification;
- 518,800 learners achieved a Numeracy qualification;
- 142,000 learners achieved an ESOL qualification.

Note that some learners achieve more than one type of Skills for Life qualification within an academic year, and hence the sum of Literacy, Numeracy and ESOL achievements is greater than the total number of learners achieving.

## Adult Safeguarded Learning

26 Based on provisional 2009/10 data, 794,000 learners participated on an Adult Safeguarded Learning course, and 622,200 learners achieved [Table 7]. In 2009/10:

- 548,800 learners took a Personal and Community Development Learning course, and 421,500 learners achieved;
- 40,500 learners took a Neighbourhood Learning in Deprived Communities course, and 32,700 learners achieved;
- 69,000 learners took a Family Literacy, Language and Numeracy course, and 53,800 learners achieved;
- 76,300 learners took a Wider Family Learning course, and 62,900 learners achieved; and
- 87,800 learners took a First Steps course, and 71,800 learners achieved.

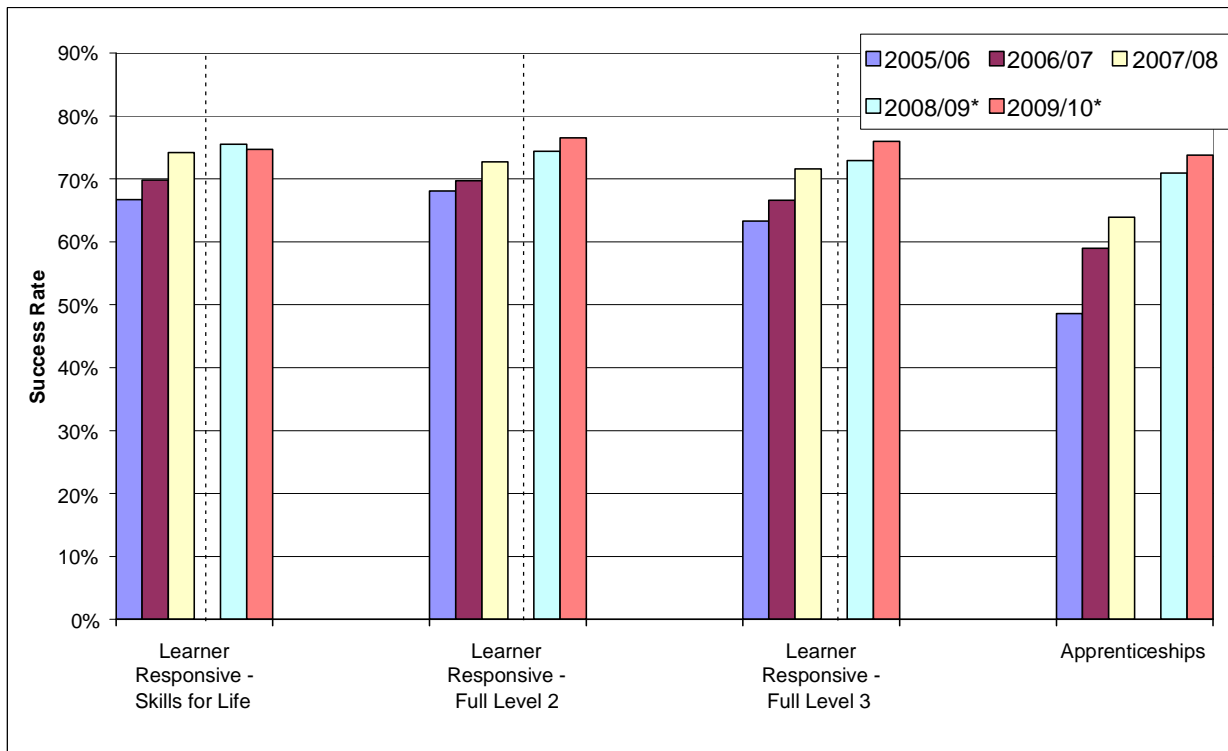
Note that these figures include learners participating on more than one type of Adult Safeguarded Learning course.

## University for Industry

27 In 2009/10, 153,800 learners were participating on a University for Industry course, and 93,800 learners achieved a qualification. [Table 3 supplementary].

## Success Rates

28 Success Rates are calculated for individual qualifications. They show how many learners that started a qualification went on to successfully complete it. Success Rates are typically calculated at a qualification level, but can be aggregated across different types of course, or for particular colleges or providers. Learner Responsive and Apprenticeship success rates are calculated on a slightly different basis; for more information please see <http://www.thedataservice.org.uk/datadictionary/businessdefinitions/Success+Rates.htm>

**Chart 5: Further Education Success Rates**

**\*Note: Learner Responsive Success Rates for 2008/09 onwards are not directly comparable with earlier years. See paragraph 54 onwards for more information.**

29 Chart 5 shows that learner responsive success rates have risen steadily between 2005/06 and 2009/10, across all qualification levels except for Skills for Life. Success rates for Apprenticeship frameworks have risen dramatically since 2005/06, increasing by over twenty five percentage points to 73.8% in 2009/10.

30 2009/10 success rates [Table 3.3] were:

- 74.7% for Learner Responsive Skills for Life qualifications – a decrease of 0.8 percentage points compared to 2008/09;
- 80.0% for Learner Responsive Level 2 qualifications – an increase of 0.4 percentage points compared to 2008/09 (76.5% for Full Level 2 – an increase of 2.1 percentage points);
- 80.9% for Learner Responsive Level 3 qualifications – the same level as 2008/09 (76.0% for Full Level 3 – an increase of 3.0 percentage points);
- 73.8% for all Apprenticeships – an increase of 2.9 percentage points compared to 2008/09;
- 73.4% for Apprenticeships (Level 2) – an increase of 3.0 percentage points compared to 2008/09;
- 74.8% for Advanced Apprenticeships (Level 3) – an increase of 2.6 percentage points compared to 2008/09.

31 Information on Train to Gain Success Rates can be found here:

[http://www.thedataservice.org.uk/statistics/statisticalfirstrelease/sfr\\_other\\_statistics/](http://www.thedataservice.org.uk/statistics/statisticalfirstrelease/sfr_other_statistics/)

## HEADLINES FOR PROVISIONAL 2010/11 DATA

### Data for the first quarter of 2010/11

32 Data for 2010/11 is a very early view of performance for the first quarter of the academic year, and will change as further data returns are received from Further Education Colleges and providers. Figures for 2010/11 will be updated in the March 2011 Statistical First Release.

33 Provisional participation data for the first quarter of 2010/11 should not be compared against final data from earlier academic years.

### Apprenticeships

34 Provisional data shows that there were 119,800 Apprenticeship starts in the first quarter of the 2010/11 academic year (August 2010 to October 2010) [Table 18.1]. Of these there were:

- 76,300 Apprenticeship (Level 2) starts;
  - 42,300 Advanced Apprenticeship (Level 3) starts; and
  - 1,200 Higher Level Apprenticeship (Level 4 or higher) starts.
- 
- Under 19 year olds started 54,200 Apprenticeship frameworks;
  - 19 – 24 year olds started 36,600 Apprenticeship frameworks;
  - 25+ year olds started 29,000 Apprenticeship frameworks.

35 Provisional data shows that there were 41,100 Apprenticeship framework achievements in the first quarter of the 2010/11 academic year (August 2010 to October 2010) [Table 18.2]. Of these there were:

- 26,900 Apprenticeship (Level 2) achievements;
  - 13,900 Advanced Apprenticeship (Level 3) achievements; and
  - 300 Higher Level Apprenticeship (Level 4 or higher) achievements.
- 
- Under 19 year olds achieved 17,400 Apprenticeship frameworks;
  - 19 – 24 year olds achieved 16,400 Apprenticeship frameworks;
  - 25+ year olds achieved 7,300 Apprenticeship frameworks.

### Other Employer-Based Training

36 Provisional data shows that there were 121,100 Other Employer-Based Training starts in the first quarter of the 2010/11 academic year (August 2010 to October 2010) [Table 19.1].

37 Provisional data shows that there were 96,600 Other Employer-Based Training achievements in the 2010/11 academic year (August 2010 to October 2010) [Table 19.2].

## Learner Participation

38 Provisional data shows that between August 2010 and October 2010 there were 2,600,900 learners participating in government-funded further education (excluding schools and Higher Education) [Table 15]. Of these:

- 907,800 were aged under 19 [Table 13];
- 1,693,100 were aged 19 and over [Table 14].
  
- 875,000 learners participated on a Skills for Life course [Table 15];
- 1,086,500 learners participated on a Level 2 course, of which 758,900 were on a full Level 2 course [Table 15];
- 866,000 learners participated on a Level 3 course, of which 729,700 were on a full Level 3 course [Table 15];
  
- 307,300 learners participated on an Adult Safeguarded Learning course [Table 17].

## CHANGES INCLUDED IN THIS SFR

39 Following a review of the content and timing of the SFR, we have made a number of changes to this Release. These include:

- Adding a supplementary table that shows Level 4 and higher qualifications that are delivered through both Further and Higher Education.
- Adding a key summary statistics page at the start of this Release.

## CHANGES IN THE NEXT SFR

40 The next edition of this SFR will be published in March 2011. The planned changes are listed below, though these are subject to change.

- Showing participation on courses recorded on the Qualification and Credits Framework.
- Provisional estimates from the Labour Force Survey on the level of highest qualification held by adults in England in 2010 are expected to be published in April as a supplementary release to the March SFR. These estimates will take on the final aspects of methodological change introduced in March 2010 (details available at <http://www.thedataservice.org.uk/statistics/statisticalfirstrelease/methodology/>) by using matched HESA data in the calculation process. The final estimates for 2006 through to 2009 will also be included at this stage, replacing the provisional estimates last updated in March 2010.

41 More information on the review, and its findings, can be found at:

[http://www.thedataservice.org.uk/statistics/statisticalfirstrelease/sfr\\_user\\_engagement/](http://www.thedataservice.org.uk/statistics/statisticalfirstrelease/sfr_user_engagement/)

## SUPPORTING DATA

### Supplementary Tables

- 42 A full list of supplementary tables relating to this SFR can be found on the Data Service website at:  
[http://www.thedataservice.org.uk/statistics/statisticalfirstrelease/sfr\\_supplementary\\_tables/](http://www.thedataservice.org.uk/statistics/statisticalfirstrelease/sfr_supplementary_tables/) These data include breakdowns by age, gender, ethnicity, learners with learning difficulties and/or disabilities and/or health problems, region, local authority, parliamentary constituency, sector subject area and funding stream. For more information on exactly what data will be released, and on which date, please see the supplementary tables list on the website.
- 43 The Data Service have also published a related research report on Science, Technology, Engineering and Mathematics (STEM) in the further education sector. This research report is available on the Data Service website at:  
[http://www.thedataservice.org.uk/statistics/other\\_statistics\\_and\\_research/](http://www.thedataservice.org.uk/statistics/other_statistics_and_research/)

### Related National Statistics Releases

- 44 There are a number of other National Statistics publications available that can be used to provide contextual information to this SFR. Some of those most relevant to this Release are discussed below.
- 45 [\*Participation in Education, Training and Employment by 16-18 Year Olds in England\*](#) published on 22nd June 2010. This shows that the overall proportion of 16-18 year olds in education and training was 82.7 per cent at the end of 2009 – the highest ever rate and an increase of 3.1 percentage points from 79.7 per cent at the end of 2008. The total number of 16-18 year olds in education and training increased by 39,000 to 1.65 million at the end of 2009, the highest number ever.
- 46 [\*Level 2 and 3 Attainment by Young People in England Measured Using Matched Administrative Data: Attainment by Age 19 in 2008\*](#) published on March 18th 2010. This shows that in 2009, 78.7 per cent of people aged 19 were qualified to at least Level 2, and 51.4 per cent were qualified to Level 3. This is an increase of 2.2 percentage points and 1.6 percentage points respectively, since 2008.
- 47 [\*Higher Education Student Enrolments and Qualifications Obtained at Higher Education Institutions in the United Kingdom for the Academic Year 2009/10\*](#) published on 13th January 2011. This Release shows that the total number of HE enrolments at English Higher Education Institutions stood at 2,093,635 in 2009/10, an increase of 4% from 2008/09. In terms of qualifications, in 2009/10 there were 292,410 first degree graduates – a 6% increase from 2008/09.
- 48 [\*Education and Training Statistics for the United Kingdom\*](#) published on 26th November 2009. This Release provides statistics relating to education and training in the UK and includes chapters relating to post-compulsory education & training and qualifications. Information includes participation of learners in further education by country of study, participation in job-related training and the highest level of qualification held by adults in the population (UK).

## Other Related Statistics

49 In December 2010 we published comparable information gathered through the Framework for Excellence on the quality and outcomes of further education provision. This information includes the views of learners and employers on the quality of the learning and training they have received; including attainment of learning aims, and progression into further and higher learning and employment. These indicators are published on the Framework for Excellence website at: <http://ffe.skillsfundingagency.bis.gov.uk>

## Further Education Statistics for Other Countries in the United Kingdom

50 The focus of this SFR is on government-funded Further Education provision in England. Similar information is available for other countries in the United Kingdom, and provides useful contextual background to these statistics.

51 Statistics on Further Education and Work-Based Learning in **Wales** can be found at: <http://wales.gov.uk/topics/statistics/headlines/post16education2010/1005131/?lang=en>

52 Statistics on Professional and Technical Enrolments in the **Northern Ireland** Further Education Sector for 2007/08 and 2008/09 can be found at: <http://www.delni.gov.uk/professional-and-technical-enrolments>

53 Facts and figures on learners in Further Education in **Scotland** can be found at: [http://www.sfc.ac.uk/web/FILES/ReportsandPublications/Facts\\_and\\_Figures\\_2010.pdf](http://www.sfc.ac.uk/web/FILES/ReportsandPublications/Facts_and_Figures_2010.pdf) Additionally, user-defined tables on Further Education learners and courses can be produced at: <https://stats.sfc.ac.uk/infact/>

## NOTES

### Issues with Comparing Data Across Academic Years

54 In January 2007, BIS consulted on a new funding approach for learners. This included three new demand led funding (DLF) models and a new funding formula, all of which were introduced in the 2008/09 academic year.

55 To support this, it has been necessary to bring in some technical changes from 2008/9 to how and where some activities are counted. Table B shows the effect the new funding approach has had on how and where we count learners.

56 Table A shows that overall the new funding methodology has had a small impact of just over one per cent on total learner participation, and minimal effect on overall achievements. However, individual series (excluding Apprenticeship starts and achievements) are more significantly affected, and should not be compared with those in earlier years. The level of provision at which a learner is studying is unaffected. More information on these changes can be found at: <http://www.thedataservice.org.uk/NR/rdonlyres/5DC702AA-5117-40E1-A15E-01F95F2AF32B/0/TheeffectsofDemandLedFundingonthecountof2008v2.doc>



**Table A: Learner Numbers in 2007/08 Under the Previous and Current Funding Models**

	Funding Stream (As at 2007/08)	2007/08 Funded Learners			
		Original Learner Numbers	Learner Numbers Under the New Funding Methodology	Difference	Change
<b>Participation</b>	<b>Total Learners</b>	<b>4,360,700</b>	<b>4,417,000</b>	<b>56,200</b>	<b>1.3%</b>
	of which Further Education (FE)	2,464,100	2,328,400	-135,700	-5.5%
	of which University for Industry (Ufi)	216,300	216,300	No Change	No Change
	of which Adult Community Learning (ACL)	725,400	824,500	99,000	13.7%
	of which Work-based Learning (WBL - includes Apprenticeships)	495,700	411,600	-84,100	-17.0%
	of which Train to Gain (TtG)	459,200	694,800	235,500	51.3%
<b>Achievement</b>	<b>Total Learners</b>	<b>2,960,900</b>	<b>2,966,200</b>	<b>5,200</b>	<b>0.2%</b>
	of which Further Education (FE)	1,896,800	1,777,200	-119,700	-6.3%
	of which University for Industry (Ufi)	116,100	116,100	No Change	No Change
	of which Adult Community Learning (ACL)	620,000	688,400	68,400	11.0%
	of which Work-based Learning (WBL - includes Apprenticeships)	141,600	112,500	-29,000	-20.5%
	of which Train to Gain (TtG)	186,500	304,000	117,500	63.0%

**Notes**

- Figures have been rounded to the nearest hundred; percentages are calculated based on pre-rounded data.
- Original Learner Numbers are the actual volume of funded learners in each funding stream in 2007/08. The New Funding Methodology totals are the modelled volumes of learners that would have been funded under demand led funding.
- In the new funding methodology, the FE totals do not include learners on Adult Safeguarded Learning (ASL) provision or learners studying NVQs in the workplace. Entry to Employment learners originally counted in the WBL funding stream have been added to the FE totals.
- In the new funding methodology, the ACL totals include all learners originally counted in the ACL collection and learners on ASL programmes originally counted in the FE collection.
- In the new funding methodology, the WBL totals only include all learners on Apprenticeship programmes. All other provision originally counted in the WBL collection is now counted in the FE totals and TtG totals.
- In the new funding methodology, the TtG totals include all learners originally counted in the TtG collection, as well as learners studying NVQs in the workplace that were originally counted in the FE collection and learners studying NVQs from the WBL collection that were not part of apprenticeship programmes.

## Scope

- 57 Should we need to make an unplanned revision to the statistics contained in this release, we will follow the procedures outlined in the Revisions Policy for this Statistical first Release. This can be found at:  
<http://www.thedataservice.org.uk/statistics/statisticalfirstrelease/compliance/>  
This includes action to understand the impact that any revisions will have, as well as ensuring that they are clearly communicated to the reader.
- 58 Information from the different post-16 learning options have been drawn together to give a coherent and comprehensive picture of the participation and achievement of young people and adults after the age of 16. These options include:
- FE organisations
  - Sixth form colleges
  - Local Authorities
  - Independent training organisations.
- 59 These organisations deliver a wide variety of government programmes, including:
- College-based Learning
  - Apprenticeships
  - Train to Gain
  - University for Industry
  - Adult Safeguarded Learning.
- 60 This SFR does not contain information regarding:
- **Delivery in School Sixth Forms**, including maintained, independent and academy schools. We are hoping to include this in future editions of the SFR, once more work has been done to reconcile the different data sources. Figures taken from the Department for Education (DfE) Participation in Education, Training and Employment by 16-18 Year Olds in England Statistical Release show there were 507,300 students studying in School Sixth Forms in 2008/09, based on a snapshot of January 2009 census data.
  - **Higher education**. The publication referenced in paragraph 47 shows that the total number of HE enrolments at English Higher Education Institutions stood at 2,093,635 in 2009/10.
  - **Privately-funded training at FE organisations/ independent training organisations**. It is difficult to estimate the total volume of activity in the whole of the FE sector, including both public and privately funded learning. Table 12 of this Release shows the number of Vocational Qualifications awarded in the United Kingdom. This includes both public and privately funded qualifications, and gives some sense of scale of total vocationally-related activity in the sector.

## Data Definitions

- 61 A definitions document to accompany this release is available on the Data Service website at:  
[http://www.thedataservice.org.uk/statistics/statisticalfirstrelease/sfr\\_current/](http://www.thedataservice.org.uk/statistics/statisticalfirstrelease/sfr_current/)
- 62 The 'Level of Highest Qualification Held by Adults' statistics provided here are produced using data on the highest qualification held by individuals from the Labour Force Survey in each year. The LFS is conducted by the Office for National Statistics and the estimates provided are the best measure of attainment within the population at Quarter 4 each year. Further details of how this information is used to calculate the estimates presented here can be found at:  
<http://www.thedataservice.org.uk/statistics/statisticalfirstrelease/methodology/>
- 63 From 2004 onwards, statistics relating to changes in attainment of 19 year olds at Level 2 and monitoring progress towards young people's attainment targets are based on a new administrative data source published by the Department for Education. For more information, see the Release listed in paragraph 46.

## PUBLICATION CYCLE ACROSS THE YEAR

- 64 Further information on the publication dates for future editions of the SFR can be found on the BIS statistics home page at: <http://stats.bis.gov.uk/>
- 65 Data published in this SFR is categorised as either 'provisional' (including 'near-final') or 'final'. Provisional data will be updated in future Releases, as more complete data becomes available. Table B below shows, for each quarterly Release, provisional and final data included.

**Table B: Publication Cycle for this SFR**

Release	Data Included
<b>January 2011</b>	- <b>Final</b> Learner Responsive participation data for 2009/10
	- <b>Final</b> Learner Responsive achievement data for 2009/10
	- <b>Final</b> Employer Responsive data for 2009/10
	- Provisional Employer Responsive data for the first quarter of 2010/11
	- Further Education Success Rates for 2009/10
<b>March 2011</b>	- Provisional in-year Learner Responsive participation data for the first six months of 2010/11
	- Provisional in-year Employer Responsive data for the first half of 2010/11
	- <b>Final</b> data on the level of highest qualification held for adults in the population in 2010
<b>June 2011</b>	- Provisional in-year Learner Responsive participation data for the first nine months of 2010/11
	- Provisional in-year Employer Responsive data for the first three quarters of 2010/11
<b>November 2011</b>	- Provisional in-year Learner Responsive participation data for all of 2010/11
	- Provisional in-year Employer Responsive data for all of 2010/11

66 The Statistical First Release is an evolving product, and we welcome feedback. If you have comments or feedback on the SFR, these can be sent to: [servicedesk@thedata-service.org.uk](mailto:servicedesk@thedata-service.org.uk), or alternatively, you can call 0870 267 0001.

67 If you have a statistical question around the content or presentation of National Statistics in the Release, please contact James Brennan at [James.Brennan@bis.gsi.gov.uk](mailto:James.Brennan@bis.gsi.gov.uk)

68 If you would like to sign up for Web alerts, so that you are automatically sent an alert when new information is put on the website, please subscribe at [http://www.thedata-service.org.uk/News/ds\\_alerts/](http://www.thedata-service.org.uk/News/ds_alerts/)

## TABLE GUIDE

69 This section provides a brief summary of what is included in each table of this Release. Tables 1 to 13 focus on the 2009/10 academic year; Tables 13 to 19 show provisional data for the first quarter of 2010/11.

- Tables 1 – 3 show standard performance metrics for the further education sector: participation; achievement; and success rates.
- Table 4 shows a demographic summary of learners participating in Further Education.
- Table 5 shows performance against the key programmes outlined in the relevant Government funding policy for the FE sector.
- Table 6 shows Skills for Life performance.
- Table 7 shows participation and achievement in Adult Safeguarded Learning.
- Tables 8 and 9 show starts and achievements for Apprenticeships and Train to Gain respectively. These are the standard performance metrics used to measure performance on these programmes.
- Tables 10 and 11 show level of attainment in the population (working age and economically active respectively) from the Labour Force Survey.
- Table 12 shows a quarterly time series of information on Vocational Qualifications awarded.
- Tables 13 to 19 repeat earlier tables; showing provisional in-year participation for the first quarter of the 2010/11 academic year (August 2010 – October 2010).

### Supplementary Tables

70 A full list of supplementary tables relating to this SFR can be found on the Data Service website at:

[http://www.thedataservice.org.uk/statistics/statisticalfirstrelease/sfr\\_supplementary\\_tables/](http://www.thedataservice.org.uk/statistics/statisticalfirstrelease/sfr_supplementary_tables/) These data include breakdowns by age, gender, ethnicity, learners with learning difficulties and/or disabilities and/or health problems, region, local authority, parliamentary constituency, sector subject area and funding stream.

## Table Footnotes

### General Footnotes

- 1) Volumes are rounded to the nearest hundred; percentages are calculated on pre-rounded data.
- 2) '-' Indicates a base value of less than fifty or a percentage of less than 0.5%.
- 3) These tables (except 10-12) include learners that were funded by the Learning and Skills Council and/or are now funded by the Skills Funding Agency or Young People's Learning Agency.
- 4) For definitions of variables used in the tables please see the data dictionary - <http://www.thedataservice.org.uk/datadictionary/>
- 5) In tables 1 to 5 and 13 to 15, tables use age as at 31 August of the academic year for all provision. These tables include learners under 19, including a small number of under 16 year olds.
- 6) In tables 1 to 7 and 13 to 17, full-year numbers are a count of the number of learners that participated/achieved at any point during the year. Learners undertaking/achieving more than one course will appear only once in the 'total learners' category for each data collection. However, learners that are included in different data collections, whether that relates to different years or different funding streams, will be counted more than once. All learners undertaking/achieving a full level 2 or 3 qualification will also appear in the level 2 or level 3 category, respectively.
- 7) The data source for all tables is the Individualised Learner Record, except where stated.
- 8) Further breakdowns of the data are available at the Data Service website: [http://www.thedataservice.org.uk/statistics/statisticalfirstrelease/sfr\\_supplementary\\_tables/](http://www.thedataservice.org.uk/statistics/statisticalfirstrelease/sfr_supplementary_tables/)

### Tables 1-3 and 13-15 - FE and Skills

- 9) Success rates are calculated as the number of learning aims achieved divided by the number of learning aims expected to complete, excluding any learners who transferred on to another learning aim within the same institution.
- 10) Apprenticeship success rates are based on the number of learners who meet all of the requirements of their apprenticeship framework, divided by the number of learners who have left training or successfully completed their training in the academic year.
- 11) Apprenticeship success rates are not affected by demand led funding.
- 12) Tables 1.2, 2.2 and 3.2 report on the actual number of achievements within the academic year without reference to those which were expected to complete. Table 1.3, 2.3 and 3.3 report on success rates which are based on the reported achievement of individual aims that were expected to complete in the academic year.
- 13) FE and Skills participation figures for 2010/11 are available in tables 13-15 of this release.
- 14) Tables which show provisional estimates for 2010/11 are not directly comparable with figures for previous years.

### Table 4 - FE and Skills Demographics

- 15) Total Learner Responsive also includes learners on courses with 'No Level Assigned'. Learners undertaking courses at more than one level will be counted once for each applicable level, but once only in Total Learner Responsive. Learners studying a Level 2 Skills for Life qualification will be counted in both the Level 2 and Skills for Life categories, but only once in totals.
- 16) Other Employer Responsive provision that is not Apprenticeships or Train to Gain is not shown separately, but is included in the "Total" column of this table.
- 17) Age, gender, learners with learning difficulties and/or disabilities and ethnicity is based upon self-declaration by the learner.

### Table 5 - FE and Skills by provision type

- 18) Foundation Learning Tier totals are those aims that are Below Level 2 and approved.
- 19) Train to Gain No Level Assigned includes SME flexibilities which are thin Level 2 and 3 and Level 2 and 3 units. The Policy for SME flexibilities was introduced in January 2009.

### Table 7 and 17 - Adult Safeguarded Learning

- 20) Total Learners includes learners participating in and achieving ASL provision in the FE funding stream for 2005/06 to 2007/08, and learners participating in and achieving First Steps provision in the Learner Responsive funding stream for 2008/09 onwards. Totals are higher than in the ACL/ASL funding stream table published in this release, due to including these additional learners.
- 21) Provision type figures are only shown for years where provision type can be accurately determined for all learners. ACL learners in 2005/06 cannot be accurately categorised. First Steps learners in 2006/07 cannot be accurately categorised, but other ASL provision types can be identified, including those recorded in the FE funding stream. All ASL provision types can be accurately categorised in 2007/08 onwards, including those recorded in the FE funding stream.
- 22) There were 7,900 participating and 6,400 achieving learners with ASL aims in the 2008/09 and 35,900 participating and 32,600 achieving learners with ASL aims in the 2009/10 Learner Responsive funding stream that are not included in these figures in table 7. The only ASL provision included for 2008/09 and 2009/10 is recorded in the ASL funding stream.
- 23) There were 2,400 participating learners with ASL aims in the 2010/11 Learner Responsive funding stream that

are not included in these figures in table 17. The only ASL provision included for 2010/11 is recorded in the ASL funding stream.

**24)** Adult Safeguarded Learning participation figures for 2010/11 are available in table 17 of this release.

#### **Table 8 and 18 – Apprenticeships**

**25)** Unlike learner figures in earlier tables, figures for 2008/09 onwards are comparable with earlier years as demand led funding rules are not applied to starts and achievements.

**26)** Age is calculated based on age at start of the programme rather than based on 31 August.

**27)** In tables 8.1 and 18.1 full-year numbers are a count of the number of starts at any point during the year.

Learners starting more than one framework will appear more than once.

**28)** In tables 8.2 and 18.2 full-year numbers are a count of the number of framework achievements at any point during the year. Learners achieving more than one framework will appear more than once.

**29)** Programme-Led Apprenticeships recorded in WBL ILR returns are included in the above figures.

**30)** In order to be counted as a successful achievement, all elements of the framework must have been achieved.

**31)** Quarter 1 - 1 August to 31 October; Quarter 2 - 1 November to 31 January; Quarter 3 - 1 February to 30 April;

Quarter 4 - 1 May to 31 July.

#### **Table 9 and 19 - Train to Gain/Other Employer-Based Training**

**32)** Demand led funding rules are not applied to starts and achievements. However, figures for 2008/09 onwards are not comparable with earlier years as in 2008/09 NVQs delivered in the workplace previously funded by FE are now funded by Train to Gain. There were 181,000 starts and 132,000 achievements in NVQs delivered in the workplace in 2007/08 (Source - FE 2007/08 F05 Final).

**33)** In tables 9.1 and 19.1 full-year numbers are a count of the number of starts at any point during the year.

Learners starting more than one course will appear more than once.

**34)** In tables 9.2 and 19.2 full-year numbers are a count of the number of achievements at any point during the year.

Learners achieving more than one course will appear more than once.

**35)** 'Other Level 2' and 'Other Level 3' qualifications includes learners starting Train to Gain courses accessed through new funding flexibilities. These include thin Level 2 and 3, and Level 2 and 3 units, for 2008/09 onwards. These were made available from January 2009.

**36)** Table 9.2 includes Employer Training Pilot data from April 2006 onwards.

**37)** Quarter 1 - 1 August to 31 October; Quarter 2 - 1 November to 31 January; Quarter 3 - 1 February to 30 April;

Quarter 4 - 1 May to 31 July.

#### **Table 12 - Vocational Qualifications**

**38)** This table covers all levels of vocational qualifications reported through Ofqual. Data are supplied by awarding organisations.

**39)** Academic year is October to September. For example, the 2005/06 academic year is October 2005 to September 2006.

**40)** Key Skills data was not collected prior to October 2009.

**41)** 'Other Vocational Qualifications' includes Basic Skills, Entry Level, English for Speakers Other Languages, Functional Skills, Free-Standing Mathematics Qualification, Key Skills, National Qualifications Framework and Other General types.

Table 1.1: Young People (Under 19s) FE and Apprenticeship Participation by Level (2005/06 to 2009/10) – Learner Volumes

		Funded Learners							
		2005/06	2006/07	2007/08	2008/09	2009/10			
		Full Year	Full Year	% change 05/06 to 06/07	Full Year	% change 06/07 to 07/08	Full Year	Full Year (near-final)	% change 08/09 to 09/10
Level									
<b>Total Learners</b>		<b>1,026,400</b>	<b>1,026,200</b>	<b>-</b>	<b>1,056,400</b>	<b>2.9%</b>	<b>1,065,900</b>	<b>1,094,800</b>	<b>2.7%</b>
<b>Participation</b>	of which...								
	Below Level 2 (excluding Skills for Life)	333,600	315,700	-5.4%	332,200	5.2%	291,600	310,600	6.5%
	Skills for Life	498,000	488,500	-1.9%	487,200	-	504,700	521,400	3.3%
	Full Level 2	296,900	300,900	1.3%	302,200	-	295,400	315,500	6.8%
	Full Level 3	331,100	343,800	3.8%	357,800	4.1%	371,300	397,900	7.2%
	Level 2	551,300	557,700	1.2%	562,700	0.9%	576,400	594,000	3.1%
	Level 3	441,400	458,900	4.0%	473,600	3.2%	485,900	510,300	5.0%
	Level 4+	1,200	1,000	-15.4%	1,300	34.0%	1,100	1,300	12.2%
No Level Assigned	395,100	434,400	9.9%	464,900	7.0%	582,200	606,900	4.2%	

Table 1.2: Young People (Under 19s) FE and Apprenticeship Achievement by Level (2005/06 to 2009/10) – Learner Volumes

		Funded Learners							
		2005/06	2006/07	2007/08	2008/09	2009/10			
		Full Year	Full Year	% change 05/06 to 06/07	Full Year	% change 06/07 to 07/08	Full Year	Full Year (near-final)	% change 08/09 to 09/10
Level									
<b>Total Learners</b>		<b>666,600</b>	<b>679,600</b>	<b>1.9%</b>	<b>717,300</b>	<b>5.5%</b>	<b>775,800</b>	<b>808,900</b>	<b>4.3%</b>
<b>Achievement</b>	of which...								
	Below Level 2 (excluding Skills for Life)	202,200	196,600	-2.8%	218,600	11.2%	225,200	244,500	8.6%
	Skills for Life	279,600	280,200	-	291,900	4.2%	326,800	337,700	3.3%
	Full Level 2	119,600	133,900	12.0%	138,600	3.5%	150,600	165,100	9.6%
	Full Level 3	137,700	148,200	7.6%	159,800	7.8%	167,900	183,700	9.4%
	Level 2	276,400	301,700	9.2%	320,500	6.2%	357,500	376,500	5.3%
	Level 3	260,700	278,300	6.8%	293,500	5.5%	311,200	330,200	6.1%
	Level 4+	300	200	-11.8%	600	142.5%	500	500	9.8%
No Level Assigned	275,200	300,400	9.2%	327,700	9.1%	389,600	403,900	3.7%	

Table 1.3: Young People (Under 19s) FE and Apprenticeship Success Rates by Level (2005/06 to 2009/10) – Percentages

		2005/06	2006/07	2007/08	2008/09	2009/10
		Full Year	Full Year	Full Year	Full Year	Full Year
Level						
<b>Total Further Education/Learner Responsive Provision</b>		<b>75.1%</b>	<b>77.4%</b>	<b>79.9%</b>	<b>80.6%</b>	<b>81.1%</b>
<b>of which...</b>	Skills for Life	69.0%	72.8%	76.0%	76.0%	75.5%
	Full Level 2	67.9%	70.1%	74.1%	75.9%	77.8%
	Full Level 3	64.9%	67.7%	72.6%	74.5%	76.6%
	Level 2	69.6%	73.3%	77.0%	78.3%	79.6%
	Level 3	77.5%	79.3%	81.0%	81.6%	81.5%
<b>Apprenticeships</b>						
<b>of which...</b>	Apprenticeships (level 2)	51.8%	60.3%	64.2%	68.3%	71.1%
	Advanced Apprenticeships (level 3)	44.5%	56.9%	60.7%	73.6%	76.2%
	All	<b>49.7%</b>	<b>59.5%</b>	<b>63.3%</b>	<b>69.6%</b>	<b>72.4%</b>

**Notes**

1) These tables include Apprenticeships, Train to Gain, University for Industry, Adult Safeguarded Learning and Further Education/Learner Responsive Provision which includes General Further Education Colleges including Tertiary, Sixth Form Colleges, Special College - Agricultural and Horticultural Colleges and Art and Design Colleges, Specialist Colleges and External Institutions.

2) Figures for 2008/09 onwards are not directly comparable to earlier years as the introduction of demand led funding has changed how data is collected and how funded learners are defined from 2008/09 onwards. More information on demand led funding is available at <http://www.thedataservice.org.uk/datadictionary/businessdefinitions/Demand+Led+Funding.htm>. Apprenticeship success rates are not affected by demand led funding.

3) Please see the general footnotes and the FE and Skills footnotes sections for further information on these tables.



Table 2.1: Adult (19+) FE and Skills Participation by Level (2005/06 to 2009/10) – Learner Volumes

		Funded Learners							
		2005/06	2006/07	2007/08	2008/09	2009/10			
		Full Year	Full Year	% change 05/06 to 06/07	Full Year	% change 06/07 to 07/08	Full Year	Full Year (near-final)	% change 08/09 to 09/10
Level									
<b>Total Learners</b>		<b>3,996,000</b>	<b>3,205,700</b>	<b>-19.8%</b>	<b>3,304,400</b>	<b>3.1%</b>	<b>3,771,200</b>	<b>3,526,600</b>	<b>-6.5%</b>
<b>Participation</b>	of which...								
	Below Level 2 (excluding Skills for Life)	1,031,800	589,500	-42.9%	532,500	-9.7%	496,800	435,800	-12.3%
	Skills for Life	980,000	809,300	-17.4%	824,800	1.9%	945,100	906,900	-4.0%
	Full Level 2	451,600	516,300	14.3%	740,000	43.3%	968,600	971,000	-
	Full Level 3	265,600	267,600	0.7%	328,100	22.6%	423,900	469,100	10.6%
	Level 2	1,245,500	1,118,400	-10.2%	1,319,400	18.0%	1,549,000	1,451,700	-6.3%
	Level 3	526,300	485,800	-7.7%	528,200	8.7%	619,700	604,900	-2.4%
	Level 4+	68,300	59,900	-12.2%	53,200	-11.1%	58,200	49,500	-14.9%
No Level Assigned	1,050,400	842,300	-19.8%	803,600	-4.6%	910,500	936,900	2.9%	

Table 2.2: Adult (19+) FE and Skills Achievement by Level (2005/06 to 2009/10) – Learner Volumes

		Funded Learners							
		2005/06	2006/07	2007/08	2008/09	2009/10			
		Full Year	Full Year	% change 05/06 to 06/07	Full Year	% change 06/07 to 07/08	Full Year	Full Year (near-final)	% change 08/09 to 09/10
Level									
<b>Total Learners</b>		<b>2,931,400</b>	<b>2,233,100</b>	<b>-23.8%</b>	<b>2,243,600</b>	<b>-</b>	<b>2,584,000</b>	<b>2,482,300</b>	<b>-3.9%</b>
<b>Achievement</b>	of which...								
	Below Level 2 (excluding Skills for Life)	758,100	430,200	-43.2%	406,500	-5.5%	367,000	332,600	-9.4%
	Skills for Life	737,800	540,900	-26.7%	520,700	-3.7%	639,100	605,400	-5.3%
	Full Level 2	216,500	235,600	8.8%	320,300	35.9%	493,900	555,900	12.6%
	Full Level 3	110,000	115,000	4.6%	134,400	16.9%	170,200	237,800	39.7%
	Level 2	759,200	660,600	-13.0%	734,700	11.2%	910,800	924,300	1.5%
	Level 3	285,600	271,400	-5.0%	285,600	5.2%	317,000	344,200	8.6%
	Level 4+	33,100	30,300	-8.4%	25,800	-14.9%	27,600	26,900	-2.5%
No Level Assigned	866,600	689,700	-20.4%	682,800	-1.0%	756,400	740,300	-2.1%	

Table 2.3: Adult (19+) FE and Apprenticeship Success Rates by Level (2005/06 to 2009/10) – Percentages

		2005/06	2006/07	2007/08	2008/09	2009/10
		Full Year	Full Year	Full Year	Full Year	Full Year
Level						
<b>Total Further Education/Learner Responsive Provision</b>		<b>76.8%</b>	<b>76.5%</b>	<b>80.5%</b>	<b>80.6%</b>	<b>80.3%</b>
<b>of which...</b>	Skills for Life	65.3%	67.9%	73.1%	75.1%	74.3%
	Full Level 2	68.3%	69.4%	71.4%	72.1%	74.8%
	Full Level 3	62.0%	65.5%	70.6%	70.1%	75.1%
	Level 2	74.2%	75.6%	79.6%	80.5%	80.3%
	Level 3	68.6%	72.0%	77.1%	78.4%	78.7%
<b>Apprenticeships</b>						
<b>of which...</b>	Apprenticeships (level 2)	50.9%	60.1%	64.8%	72.8%	75.6%
	Advanced Apprenticeships (level 3)	41.4%	56.0%	64.5%	71.2%	74.0%
	All	<b>46.9%</b>	<b>58.5%</b>	<b>64.7%</b>	<b>72.2%</b>	<b>75.0%</b>

**Notes**

1) These tables include Apprenticeships, Train to Gain, University for Industry, Adult Safeguarded Learning and Further Education/Learner Responsive Provision which includes General Further Education Colleges including Tertiary, Sixth Form Colleges, Special College - Agricultural and Horticultural Colleges and Art and Design Colleges, Specialist Colleges and External Institutions.

2) Figures for 2008/09 onwards are not directly comparable to earlier years as the introduction of demand led funding has changed how data is collected and how funded learners are defined from 2008/09 onwards. More information on demand led funding is available at <http://www.thedataservice.org.uk/datadictionary/businessdefinitions/Demand+Led+Funding.htm>. Apprenticeship success rates are not affected by demand led funding.

3) Please see the general footnotes and the FE and Skills footnotes sections for further information on these tables.

Table 3.1: Overall FE and Skills Participation by Level (2005/06 to 2009/10) – Learner Volumes

		Funded Learners							
		2005/06	2006/07	2007/08	2008/09	2009/10			
		Full Year	Full Year	% change 05/06 to 06/07	Full Year	% change 06/07 to 07/08	Full Year	Full Year (near-final)	% change 08/09 to 09/10
Level									
<b>Total Learners</b>		<b>5,022,400</b>	<b>4,231,900</b>	<b>-15.7%</b>	<b>4,360,700</b>	<b>3.0%</b>	<b>4,837,100</b>	<b>4,621,300</b>	<b>-4.5%</b>
<b>Participation</b>	of which...								
	Below Level 2 (excluding Skills for Life)	1,365,500	905,200	-33.7%	864,700	-4.5%	788,400	746,300	-5.3%
	Skills for Life	1,478,000	1,297,800	-12.2%	1,312,100	1.1%	1,449,800	1,428,400	-1.5%
	Full Level 2	748,500	817,200	9.2%	1,042,300	27.5%	1,263,900	1,286,500	1.8%
	Full Level 3	596,700	611,400	2.5%	685,900	12.2%	795,300	867,000	9.0%
	Level 2	1,796,900	1,676,100	-6.7%	1,882,100	12.3%	2,125,400	2,045,700	-3.8%
	Level 3	967,700	944,700	-2.4%	1,001,800	6.0%	1,105,600	1,115,200	0.9%
	Level 4+	69,400	60,900	-12.3%	54,600	-10.4%	59,300	50,700	-14.4%
No Level Assigned	1,445,500	1,276,700	-11.7%	1,268,600	-0.6%	1,492,800	1,543,800	3.4%	

Table 3.2: Overall FE and Skills Achievement by Level (2005/06 to 2009/10) – Learner Volumes

		Funded Learners							
		2005/06	2006/07	2007/08	2008/09	2009/10			
		Full Year	Full Year	% change 05/06 to 06/07	Full Year	% change 06/07 to 07/08	Full Year	Full Year (near-final)	% change 08/09 to 09/10
Level									
<b>Total Learners</b>		<b>3,598,000</b>	<b>2,912,700</b>	<b>-19.0%</b>	<b>2,960,900</b>	<b>1.7%</b>	<b>3,359,700</b>	<b>3,291,200</b>	<b>-2.0%</b>
<b>Achievement</b>	of which...								
	Below Level 2 (excluding Skills for Life)	960,300	626,800	-34.7%	625,100	-	592,200	577,100	-2.6%
	Skills for Life	1,017,300	821,100	-19.3%	812,600	-1.0%	965,900	943,100	-2.4%
	Full Level 2	336,100	369,500	9.9%	458,800	24.2%	644,500	721,100	11.9%
	Full Level 3	247,700	263,200	6.3%	294,300	11.8%	338,100	421,400	24.6%
	Level 2	1,035,600	962,300	-7.1%	1,055,200	9.7%	1,268,300	1,300,800	2.6%
	Level 3	546,300	549,700	0.6%	579,100	5.4%	628,100	674,400	7.4%
	Level 4+	33,400	30,600	-8.4%	26,400	-13.6%	28,000	27,400	-2.3%
No Level Assigned	1,141,800	990,000	-13.3%	1,010,500	2.1%	1,146,100	1,144,200	-	

Table 3.3: Overall FE and Apprenticeship Success Rates by Level (2005/06 to 2009/10) – Percentages

		2005/06	2006/07	2007/08	2008/09	2009/10
		Full Year	Full Year	Full Year	Full Year	Full Year
Level						
<b>Total Further Education/Learner Responsive Provision</b>		<b>76.2%</b>	<b>76.8%</b>	<b>80.2%</b>	<b>80.6%</b>	<b>80.7%</b>
<b>of which...</b>	Skills for Life	66.7%	69.8%	74.2%	75.5%	74.7%
	Full Level 2	68.1%	69.7%	72.7%	74.4%	76.5%
	Full Level 3	63.3%	66.6%	71.6%	72.9%	76.0%
	Level 2	72.8%	74.8%	78.6%	79.6%	80.0%
	Level 3	74.6%	77.2%	79.9%	80.9%	80.9%
<b>Apprenticeships</b>						
<b>of which...</b>	Apprenticeships (level 2 )	51.5%	60.2%	64.4%	70.4%	73.4%
	Advanced Apprenticeships (level 3)	42.9%	56.4%	62.8%	72.1%	74.8%
	All	<b>48.6%</b>	<b>59.0%</b>	<b>63.9%</b>	<b>70.9%</b>	<b>73.8%</b>

**Notes**

1) These tables include Apprenticeships, Train to Gain, University for Industry, Adult Safeguarded Learning and Further Education/Learner Responsive Provision which includes General Further Education Colleges including Tertiary, Sixth Form Colleges, Special College - Agricultural and Horticultural Colleges and Art and Design Colleges, Specialist Colleges and External Institutions.

2) Figures for 2008/09 onwards are not directly comparable to earlier years as the introduction of demand led funding has changed how data is collected and how funded learners are defined from 2008/09 onwards. More information on demand led funding is available at <http://www.thedataservice.org.uk/datadictionary/businessdefinitions/Demand+Led+Funding.htm>. Apprenticeship success rates are not affected by demand led funding.

3) Please see the general footnotes and the FE and Skills footnotes sections for further information on these tables.

Table 4: Demographic Summary of FE and Skills Participation by Funding Stream and Level (2009/10) - Learner Volumes

	Funded Learners																			
	Apprenticeships				Learner Responsive (LR)								University for Industry (Ufi)		Train to Gain (TTG)		Adult Safeguarded Learning (ASL)		Total	
	Level 2	Level 3	Total Apprenticeships	%	Below Level 2 (excluding SFL)	Skills For Life (SfL)	Level 2	Level 3	Level 4+	Total LR	%	Total Ufi (provisional)	%	Total TTG	%	Total ASL (provisional)	%	Total (near-final)	%	
<b>Total Learners</b>	<b>304,000</b>	<b>185,500</b>	<b>491,300</b>	<b>100.0%</b>	<b>676,700</b>	<b>847,400</b>	<b>987,700</b>	<b>742,600</b>	<b>35,900</b>	<b>2,247,400</b>	<b>100.0%</b>	<b>153,800</b>	<b>100.0%</b>	<b>846,900</b>	<b>100.0%</b>	<b>748,200</b>	<b>100.0%</b>	<b>4,621,300</b>	<b>100.0%</b>	
<b>Age</b>																				
Under 19	140,400	45,800	186,400	37.9%	308,400	411,100	450,300	464,300	1,000	891,800	39.7%	3,400	2.2%	-	-	4,500	0.6%	1,094,800	23.7%	
19-24	114,600	94,900	210,900	42.9%	87,000	119,300	139,500	97,800	5,500	316,400	14.1%	29,200	19.0%	127,800	15.1%	53,600	7.2%	769,000	16.6%	
25-49	44,000	40,900	85,000	17.3%	200,700	273,100	314,200	144,300	24,500	797,400	35.5%	99,500	64.7%	572,400	67.6%	386,700	51.7%	2,017,100	43.6%	
50+	5,000	3,900	8,900	1.8%	79,000	42,900	82,500	35,300	5,000	237,300	10.6%	21,600	14.0%	146,700	17.3%	290,700	38.9%	723,300	15.7%	
Unknown	-	-	-	-	1,500	900	1,100	900	-	4,400	-	-	-	-	-	12,700	1.7%	17,100	-	
<b>Gender</b>																				
Female	148,600	80,800	230,300	46.9%	312,600	444,000	536,300	418,200	23,100	1,214,300	54.0%	71,400	46.4%	418,000	49.4%	560,000	74.8%	2,536,100	54.9%	
Male	155,400	104,800	261,000	53.1%	364,000	403,400	451,400	324,400	12,900	1,033,100	46.0%	82,400	53.6%	428,800	50.6%	188,200	25.2%	2,085,200	45.1%	
<b>Learners with Learning Difficulties and/or Disabilities</b>																				
Learning Difficulty	33,500	14,000	47,600	9.7%	146,000	161,200	132,600	86,300	2,400	349,300	15.5%	16,800	10.9%	44,400	5.2%	83,900	11.2%	557,300	12.1%	
No Learning Difficulty	267,500	170,300	439,500	89.5%	487,300	638,400	800,700	623,700	31,700	1,760,900	78.4%	136,100	88.5%	786,200	92.8%	570,800	76.3%	3,806,800	82.4%	
Not Known	3,000	1,200	4,100	0.8%	43,300	47,700	54,400	32,600	1,900	137,200	6.1%	900	0.6%	16,300	1.9%	93,500	12.5%	257,200	5.6%	
<b>Ethnicity</b>																				
White	278,500	172,500	452,700	92.1%	523,700	582,500	791,700	599,700	31,200	1,719,700	76.5%	117,800	76.6%	716,400	84.6%	605,600	80.9%	3,706,700	80.2%	
Mixed	5,200	2,600	7,900	1.6%	19,900	26,200	27,100	21,900	500	61,600	2.7%	3,400	2.2%	9,800	1.2%	9,800	1.3%	95,600	2.1%	
Asian or Asian British	9,100	4,900	14,100	2.9%	48,200	101,800	67,500	53,400	1,600	188,000	8.4%	12,900	8.4%	57,300	6.8%	51,700	6.9%	337,100	7.3%	
Black or Black British	6,600	3,400	10,000	2.0%	47,800	77,100	61,900	44,900	1,400	157,300	7.0%	15,200	9.9%	38,700	4.6%	29,800	4.0%	265,000	5.7%	
Chinese or Other Ethnic Group	1,700	900	2,700	0.5%	16,600	41,000	20,200	12,200	600	65,800	2.9%	3,300	2.1%	12,600	1.5%	19,300	2.6%	109,100	2.4%	
Not Known/Not Provided	2,800	1,100	3,900	0.8%	20,500	18,800	19,200	10,500	700	54,800	2.4%	1,200	0.8%	12,100	1.4%	32,100	4.3%	107,800	2.3%	

**Notes**

1) These tables include Apprenticeships, Train to Gain, University for Industry, Adult Safeguarded Learning and Further Education/Learner Responsive Provision which includes General Further Education Colleges including Tertiary, Sixth Form Colleges, Special College - Agricultural and Horticultural Colleges and Art and Design Colleges, Specialist Colleges and External Institutions.

2) Please see the general footnotes and the FE and Skills Demographics footnotes sections for further information on these tables.

Table 5: FE and Skills - Participation and Achievement by Level and Provision Type (2008/09 and 2009/10) – Learner Volumes

Provision Type		Participation		Achievement	
		2008/09	2009/10	2008/09	2009/10
Level		Full Year	Full Year (near-final)	Full Year	Full Year (near-final)
<b>Total Learners</b>		<b>4,837,100</b>	<b>4,621,300</b>	<b>3,359,700</b>	<b>3,291,200</b>
<b>Total Learners</b>		<b>1,065,900</b>	<b>1,094,800</b>	<b>775,800</b>	<b>808,900</b>
<b>Under 19 Further Education Provision</b>		<b>793,900</b>	<b>816,700</b>	<b>671,800</b>	<b>701,700</b>
Youth	of which				
	Below Level 2	267,600	277,400	210,300	222,600
	of which Foundation Learning Tier	246,000	260,800	190,200	206,700
	Skills for Life	372,400	383,400	265,900	273,400
	Full Level 2	164,800	174,200	110,300	122,000
	Full Level 3	327,200	351,800	161,800	175,200
	No Level Assigned	492,400	517,900	347,500	362,100
	<b>Under 19 Apprentices</b>	<b>173,900</b>	<b>186,400</b>	<b>46,100</b>	<b>51,200</b>
	of which				
	Full Level 2	129,800	140,400	40,000	42,700
Full Level 3	44,100	46,000	6,100	8,500	
<b>Entry to Employment</b>		<b>78,500</b>	<b>83,700</b>	<b>40,200</b>	<b>50,200</b>
<b>Total Learners</b>		<b>3,060,100</b>	<b>2,846,400</b>	<b>1,975,800</b>	<b>1,949,500</b>
Adult	of which				
	Below Level 2	455,300	382,600	342,000	302,600
	of which Foundation Learning Tier	284,500	276,000	204,000	208,900
	Skills for Life	692,000	626,000	504,800	457,400
	Full Level 2	967,500	967,500	493,600	554,600
	Full Level 3	423,600	468,500	170,100	235,700
	No Level Assigned / Other TtG	226,300	222,700	189,600	183,100
	<b>Total Learners</b>	<b>1,754,400</b>	<b>1,560,900</b>	<b>1,297,900</b>	<b>1,197,300</b>
Adult Learner Responsive	of which				
	Below Level 2	445,500	377,100	336,600	298,800
	of which Foundation Learning Tier	274,700	270,600	198,700	205,100
	Skills for Life	581,400	555,900	406,700	396,800
	Full Level 2	139,000	190,400	78,900	113,600
	Full Level 3	108,600	148,400	62,600	94,000
	No Level Assigned	226,100	222,700	183,500	179,700
<b>Total Learners</b>		<b>1,305,700</b>	<b>1,285,500</b>	<b>677,900</b>	<b>752,200</b>
<b>Apprenticeships</b>		<b>270,900</b>	<b>304,800</b>	<b>97,100</b>	<b>120,200</b>
of which	Full Level 2	143,800	163,600	58,000	69,100
	Full Level 3	127,000	141,200	39,100	51,100
<b>Train to Gain (TtG)</b>		<b>957,300</b>	<b>846,900</b>	<b>543,000</b>	<b>538,300</b>
Employer Responsive	of which				
	Below Level 2	9,800	5,400	5,300	3,800
	of which Foundation Learning Tier	9,800	5,400	5,300	3,800
	Skills for Life	110,500	70,100	98,100	60,600
	Full Level 2	684,700	613,500	356,600	371,900
	Full Level 3	188,000	178,900	68,400	90,500
No Level Assigned / Other TtG	200	-	6,200	3,500	
Other Employer Responsive Programmes		77,600	133,800	37,900	93,700
<b>Safeguarded Adult Learning</b>		<b>755,000</b>	<b>714,600</b>	<b>638,900</b>	<b>556,400</b>
of which	Skills for Life	54,700	53,200	46,800	39,300
<b>Total Adult Learner and Employer Responsive including Safeguarded Adult Learning</b>		<b>3,771,200</b>	<b>3,526,600</b>	<b>2,584,000</b>	<b>2,482,300</b>

**Notes**

1) Further Education Provision includes General Further Education Colleges including Tertiary, Sixth Form Colleges, Special College - Agricultural and Horticultural Colleges and Art and Design Colleges, Specialist Colleges and External Institutions.

2) Please see the general footnotes and the FE and Skills by provision type footnotes sections for further information on these tables.

Table 6: FE and Skills - Skills for Life Participation and Achievement by Level (2005/06 to 2009/10) – Learner Volumes

Measure	Level	2005/06	2006/07		2007/08		2008/09	2009/10	
		Full Year	Full Year	% change 05/06 to 06/07	Full Year	% change 06/07 to 07/08	Full Year	Full Year (near-final)	% change 08/09 to 09/10
Participation	<b>Total Learners</b>	<b>1,478,000</b>	<b>1,297,800</b>	<b>-12.2%</b>	<b>1,312,100</b>	<b>1.1%</b>	<b>1,449,800</b>	<b>1,428,400</b>	<b>-1.5%</b>
	of which literacy	1,084,200	881,200	-18.7%	917,200	4.1%	1,017,900	960,100	-5.7%
	of which entry level	220,300	161,100	-26.9%	164,200	1.9%	169,600	152,000	-10.4%
	of which level 1	390,200	388,100	-0.6%	414,700	6.9%	463,400	422,200	-8.9%
	of which level 2	396,600	400,800	1.1%	403,100	0.6%	457,300	439,200	-4.0%
	of which numeracy	830,100	715,000	-13.9%	768,000	7.4%	901,700	881,400	-2.3%
	of which entry level	135,400	105,000	-22.5%	118,600	12.9%	153,600	150,200	-2.2%
	of which level 1	361,400	357,000	-1.2%	385,000	7.9%	441,400	421,900	-4.4%
	of which level 2	308,300	308,900	-	324,000	4.9%	378,600	367,300	-3.0%
	of which ESOL	266,800	244,200	-8.5%	218,100	-10.7%	211,800	201,500	-4.9%
	of which entry level	119,300	202,800	70.0%	186,500	-8.0%	181,000	170,000	-6.1%
	of which level 1	28,500	33,600	18.0%	26,400	-21.6%	26,200	26,300	-
	of which level 2	10,100	12,400	22.9%	10,000	-19.2%	10,100	10,400	3.1%
Achievement	<b>Total Learners</b>	<b>1,017,300</b>	<b>821,100</b>	<b>-19.3%</b>	<b>812,600</b>	<b>-1.0%</b>	<b>965,900</b>	<b>943,100</b>	<b>-2.4%</b>
	of which literacy	690,000	525,800	-23.8%	529,500	0.7%	615,700	582,200	-5.5%
	of which entry level	162,300	115,500	-28.8%	113,600	-1.6%	112,600	100,700	-10.5%
	of which level 1	206,700	226,300	9.5%	235,300	4.0%	282,700	242,900	-14.1%
	of which level 2	199,700	216,100	8.2%	211,300	-2.2%	253,900	250,100	-1.5%
	of which numeracy	484,200	403,100	-16.7%	425,200	5.5%	535,900	518,800	-3.2%
	of which entry level	97,400	74,200	-23.8%	78,000	5.0%	99,400	99,600	-
	of which level 1	177,400	208,100	17.3%	216,700	4.1%	272,100	250,600	-7.9%
	of which level 2	146,700	147,200	-	159,600	8.4%	199,600	195,300	-2.2%
	of which ESOL	219,700	166,200	-24.4%	156,200	-6.1%	152,000	142,000	-6.6%
	of which entry level	85,000	139,000	63.5%	134,900	-2.9%	130,900	119,900	-8.4%
	of which level 1	16,800	21,800	30.0%	17,000	-21.9%	17,000	17,300	1.8%
	of which level 2	5,300	7,700	46.2%	6,600	-14.6%	6,700	7,100	7.2%

**Notes**

1) Figures for 2008/09 onwards are not directly comparable to earlier years as the introduction of demand led funding has changed how data is collected and how funded learners are defined from 2008/09 onwards. More information on demand led funding is available at <http://www.thedataservice.org.uk/datadictionary/businessdefinitions/Demand+Led+Funding.htm>.

2) Please see the the general footnotes and the Skills for Life footnotes sections for further information on these tables.

**Table 7: Adult Community Learning (2005/06 to 2007/08) and Adult Safeguarded Learning (2008/09 to 2009/10) Participation and Achievement by Type – Learner Volumes**

Measure	Provision Type	Funded Learners							
		2005/06	2006/07		2007/08		2008/09	2009/10	
		Full Year	Full Year	% change 05/06 to 06/07	Full Year	% change 06/07 to 07/08	Full Year	Full Year (provisional)	% change 08/09 to 09/10
<b>Participation</b>	<b>Total Learners</b>	<b>765,700</b>	<b>796,700</b>	<b>4.0%</b>	<b>800,300</b>	<b>-</b>	<b>835,600</b>	<b>794,000</b>	<b>-5.0%</b>
	of which Personal and Community Development Learning		546,800		557,900	2.0%	584,400	548,800	-6.1%
	of which Neighbourhood Learning in Deprived Communities		23,900		32,200	34.7%	40,300	40,500	-
	of which Family Literacy Language and Numeracy		68,800		67,100	-2.4%	71,000	69,000	-2.9%
	of which Wider Family Learning		70,000		75,300	7.6%	80,500	76,300	-5.2%
	of which First Steps				116,000		90,300	87,800	-2.8%
<b>Achievement</b>	<b>Total Learners</b>	<b>618,600</b>	<b>653,800</b>	<b>5.7%</b>	<b>686,500</b>	<b>5.0%</b>	<b>704,700</b>	<b>622,200</b>	<b>-11.7%</b>
	of which Personal and Community Development Learning		449,800		477,000	6.0%	489,000	421,500	-13.8%
	of which Neighbourhood Learning in Deprived Communities		20,800		28,400	36.3%	34,400	32,700	-5.1%
	of which Family Literacy Language and Numeracy		57,500		57,200	-0.6%	61,000	53,800	-11.8%
	of which Wider Family Learning		57,800		67,300	16.5%	71,400	62,900	-12.0%
	of which First Steps				95,200		73,100	71,800	-1.7%

**Notes**

1) Figures for 2008/09 onwards are not directly comparable to earlier years as the introduction of demand led funding has changed how data is collected and how funded learners are defined from 2008/09 onwards. More information on demand led funding is available at <http://www.thedataservice.org.uk/datadictionary/businessdefinitions/Demand+Led+Funding.htm>.

2) Please see the general footnotes and the Adult Safeguarded Learning footnotes sections for all information on these tables.

Table 8.1: Apprenticeship Programme Starts by Level and Age (2005/06 to 2009/10)

	Age	2005/06	2006/07	2007/08	2008/09	2009/10	2008/09				2009/10			
		Full Year	Full Year	Full Year	Full Year	Full Year	Quarter 1	Quarter 2	Quarter 3	Quarter 4	Quarter 1	Quarter 2	Quarter 3	Quarter 4
Apprenticeship (level 2)	Under 19	77,100	80,800	82,000	74,200	89,400	37,000	13,300	11,300	12,600	35,700	15,500	19,500	18,800
	19-24	45,600	46,500	55,200	52,600	72,800	18,000	12,000	12,800	9,800	20,100	16,200	17,200	19,300
	25+	100	100	14,600	31,700	28,400	9,900	8,700	8,500	4,600	7,600	5,400	8,100	7,200
	<b>Total</b>	<b>122,800</b>	<b>127,400</b>	<b>151,800</b>	<b>158,500</b>	<b>190,500</b>	<b>64,900</b>	<b>34,000</b>	<b>32,600</b>	<b>27,000</b>	<b>63,400</b>	<b>37,100</b>	<b>44,800</b>	<b>45,300</b>
Advanced Apprenticeship (level 3)	Under 19	22,400	24,800	25,500	25,100	27,200	15,500	3,200	2,900	3,600	14,600	3,400	5,000	4,300
	19-24	29,500	32,000	34,800	32,000	39,800	13,400	6,500	6,700	5,400	14,900	7,000	8,700	9,200
	25+	200	100	12,600	24,200	20,600	8,400	6,100	6,100	3,500	5,800	3,300	6,100	5,500
	<b>Total</b>	<b>52,100</b>	<b>56,900</b>	<b>72,900</b>	<b>81,300</b>	<b>87,700</b>	<b>37,300</b>	<b>15,800</b>	<b>15,700</b>	<b>12,500</b>	<b>35,200</b>	<b>13,600</b>	<b>19,700</b>	<b>19,100</b>
Higher Level Apprenticeship (level 4+)	Under 19	-	-	-	-	100	-	-	-	-	100	-	-	-
	19-24	-	100	-	100	1,200	-	-	-	100	600	200	300	100
	25+	-	-	-	-	100	-	-	-	-	100	-	-	-
	<b>Total</b>	<b>-</b>	<b>100</b>	<b>100</b>	<b>200</b>	<b>1,500</b>	<b>100</b>	<b>-</b>	<b>-</b>	<b>100</b>	<b>700</b>	<b>300</b>	<b>300</b>	<b>200</b>
All Apprenticeships	Under 19	99,500	105,600	107,600	99,400	116,800	52,500	16,400	14,300	16,200	50,300	18,900	24,500	23,100
	19-24	75,200	78,600	90,100	84,700	113,800	31,500	18,500	19,500	15,200	35,600	23,400	26,100	28,600
	25+	300	300	27,200	55,900	49,100	18,300	14,900	14,600	8,100	13,400	8,700	14,200	12,800
	<b>Total</b>	<b>175,000</b>	<b>184,400</b>	<b>224,800</b>	<b>239,900</b>	<b>279,700</b>	<b>102,300</b>	<b>49,800</b>	<b>48,300</b>	<b>39,500</b>	<b>99,300</b>	<b>51,000</b>	<b>64,800</b>	<b>64,500</b>

Table 8.2: Apprenticeship Framework Achievements by Level and Age (2005/06 to 2009/10)

	Age	2005/06	2006/07	2007/08	2008/09	2009/10	2008/09				2009/10			
		Full Year	Full Year	Full Year	Full Year	Full Year	Quarter 1	Quarter 2	Quarter 3	Quarter 4	Quarter 1	Quarter 2	Quarter 3	Quarter 4
Apprenticeship (level 2)	Under 19	45,000	50,100	47,100	50,200	52,900	11,700	8,300	9,100	21,000	12,200	8,700	9,800	22,300
	19-24	25,300	28,200	28,400	35,500	38,600	7,500	7,000	8,400	12,600	9,100	7,200	8,900	13,400
	25+	-	100	900	12,500	20,300	900	1,900	3,300	6,300	5,300	4,400	4,800	5,900
	<b>Total</b>	<b>70,300</b>	<b>78,400</b>	<b>76,300</b>	<b>98,100</b>	<b>111,900</b>	<b>20,100</b>	<b>17,300</b>	<b>20,900</b>	<b>39,900</b>	<b>26,500</b>	<b>20,300</b>	<b>23,500</b>	<b>41,600</b>
Advanced Apprenticeship (level 3)	Under 19	14,000	15,600	16,200	17,500	20,100	4,000	2,800	3,600	7,100	4,500	3,700	3,800	8,100
	19-24	14,300	17,800	19,700	22,400	25,400	5,400	4,300	4,800	7,900	6,200	4,700	5,700	8,800
	25+	100	100	300	5,400	13,900	300	500	1,200	3,300	2,900	3,000	3,600	4,400
	<b>Total</b>	<b>28,400</b>	<b>33,400</b>	<b>36,200</b>	<b>45,200</b>	<b>59,400</b>	<b>9,700</b>	<b>7,600</b>	<b>9,600</b>	<b>18,300</b>	<b>13,600</b>	<b>11,500</b>	<b>13,100</b>	<b>21,300</b>
Higher Level Apprenticeship (Level 4+)	Under 19	-	-	-	-	-	-	-	-	-	-	-	-	-
	19-24	-	-	-	-	100	-	-	-	-	-	-	-	100
	25+	-	-	-	-	-	-	-	-	-	-	-	-	-
	<b>Total</b>	<b>-</b>	<b>-</b>	<b>-</b>	<b>-</b>	<b>200</b>	<b>-</b>	<b>-</b>	<b>-</b>	<b>-</b>	<b>100</b>	<b>-</b>	<b>-</b>	<b>100</b>
All Apprenticeships	Under 19	59,000	65,700	63,300	67,700	73,100	15,700	11,200	12,800	28,100	16,700	12,400	13,600	30,400
	19-24	39,600	46,000	48,100	57,800	64,200	12,900	11,300	13,200	20,500	15,300	12,000	14,600	22,300
	25+	100	200	1,200	17,900	34,300	1,200	2,500	4,600	9,600	8,200	7,400	8,400	10,300
	<b>Total</b>	<b>98,700</b>	<b>111,800</b>	<b>112,600</b>	<b>143,400</b>	<b>171,500</b>	<b>29,800</b>	<b>24,900</b>	<b>30,500</b>	<b>58,100</b>	<b>40,200</b>	<b>31,800</b>	<b>36,600</b>	<b>63,000</b>

## Notes

1) Please see the general footnotes and the Apprenticeships footnotes section for all information on these tables.

Table 9.1: Train to Gain Starts by Level (2005/06 to 2009/10)

Level	2005/06	2006/07	2007/08	2008/09		2009/10							
	April to July 2006	Full year	Full Year	Full Year	Full Year	Quarter 1	Quarter 2	Quarter 3	Quarter 4	Quarter 1	Quarter 2	Quarter 3	Quarter 4
Foundation Learning Tier	-	-	-	8,100	2,700	2,000	1,700	2,700	1,700	900	500	900	500
Full Level 2	27,700	172,400	263,900	516,900	404,500	120,800	128,200	174,200	93,600	102,300	77,400	124,000	100,700
Other Level 2	-	-	-	1,700	-	-	200	1,100	400	-	-	-	-
Full Level 3	500	14,600	43,000	135,000	96,300	39,900	32,800	40,900	21,400	29,100	16,000	27,300	23,900
Other Level 3	-	-	-	400	300	-	100	300	100	200	100	-	100
Level 4 and above	-	-	-	11,700	4,200	4,100	2,700	3,300	1,500	1,700	700	1,000	700
Skills for Life	3,500	19,300	39,200	143,400	65,900	31,900	38,400	50,300	22,800	19,800	11,700	19,600	14,800
No Level Assigned	700	100	-	300	1,000	100	-	100	-	300	200	200	300
<b>Total</b>	<b>32,400</b>	<b>206,300</b>	<b>346,200</b>	<b>817,400</b>	<b>574,900</b>	<b>198,800</b>	<b>204,100</b>	<b>272,900</b>	<b>141,500</b>	<b>154,300</b>	<b>106,600</b>	<b>173,100</b>	<b>141,000</b>

Table 9.2: Train to Gain Achievements by Level (2005/06 to 2009/10)

Level	2005/06	2006/07	2007/08	2008/09		2009/10							
	April to July 2006	Full year	Full Year	Full Year	Full Year	Quarter 1	Quarter 2	Quarter 3	Quarter 4	Quarter 1	Quarter 2	Quarter 3	Quarter 4
Foundation Learning Tier	-	-	-	5,300	3,800	900	1,000	1,400	2,000	1,200	1,000	800	900
Full Level 2	5,000	60,400	153,400	356,700	371,900	58,900	70,700	94,500	132,600	88,600	77,000	100,600	105,800
Other Level 2	-	-	-	900	400	-	-	100	700	200	200	-	-
Full Level 3	700	2,600	14,100	68,400	92,400	8,200	11,600	16,200	32,500	21,900	20,800	23,300	26,400
Other Level 3	-	-	-	200	400	-	-	-	100	200	100	-	-
Level 4 and above	-	-	-	7,300	7,100	1,100	1,400	1,700	3,100	1,800	1,700	1,800	1,800
Skills for Life	700	7,800	19,000	98,100	60,600	10,500	19,000	32,000	36,600	16,100	14,400	14,100	16,000
No Level Assigned	-	300	100	6,200	1,600	1,500	1,700	1,500	1,500	600	400	300	300
<b>Total</b>	<b>6,500</b>	<b>71,100</b>	<b>186,500</b>	<b>543,100</b>	<b>538,300</b>	<b>81,100</b>	<b>105,300</b>	<b>147,500</b>	<b>209,200</b>	<b>130,500</b>	<b>115,600</b>	<b>141,000</b>	<b>151,200</b>

ETP Achievements	2005/06 April to July 2006	2006/07 Full year
Full Level 2	22,600	16,200
Skills for Life	4,600	1,800
<b>Total</b>	<b>27,200</b>	<b>18,000</b>

**Total with ETP**                      **33,700**                      **89,100**

**Notes**

1) Demand led funding rules are not applied to starts and achievements. However, figures for 2008/09 onwards are not comparable with earlier years as in 2008/09 NVQs delivered in the workplace previously funded by FE are now funded by Train to Gain. There were 181,000 starts and 132,000 achievements in NVQs delivered in the workplace in 2007/08 (Source - FE 2007/08 F05 Final).

2) Please see the general footnotes and the Train to Gain/Other Employer-Based Training footnotes section for further information on these tables.



**Table 10.1: Level of Highest Qualification Held by People aged 19-59/64 in England (Quarter 4)<sup>1, 2, 3, 4</sup> - percentages**

Year	All people aged 19-59/64 <sup>5</sup> (thousands)	Level 4 and above	Level 3	Level 3 and above	Level 2	Level 2 and above	Below Level 2 (incl no qualifications)
2006	29,417	32.2 <sup>P</sup>	20.1	52.3	19.4	71.7	28.3
2007	29,566	33.3 <sup>P</sup>	20.6 <sup>P</sup>	53.9 <sup>P</sup>	19.0 <sup>P</sup>	73.0 <sup>P</sup>	27.0 <sup>P</sup>
2008	29,736	33.6 <sup>P</sup>	20.8	54.4	19.5	73.9	26.1
2009	29,930	35.3 <sup>P</sup>	20.6 <sup>P</sup>	55.9 <sup>P</sup>	19.7 <sup>P</sup>	75.6 <sup>P</sup>	24.4 <sup>P</sup>
2009 95% CI (+/-)		0.42		0.41		0.36	0.36

**Table 10.2: Level of Highest Qualification Held by People aged 19-59/64 in England (Quarter 4)<sup>1, 2, 3, 4</sup> - volumes (thousands)**

Year	All people aged 19-59/64 <sup>5</sup>	Level 4 and above	Level 3	Level 3 and above	Level 2	Level 2 and above	Below Level 2 (incl no qualifications)
2006	29,417	9,467 <sup>P</sup>	5,915	15,382	5,703	21,085	8,332
2007	29,566	9,839 <sup>P</sup>	6,102 <sup>P</sup>	15,941 <sup>P</sup>	5,630 <sup>P</sup>	21,571 <sup>P</sup>	7,995 <sup>P</sup>
2008	29,736	9,985 <sup>P</sup>	6,179	16,164	5,799	21,963	7,773
2009	29,930	10,557 <sup>P</sup>	6,166 <sup>P</sup>	16,723 <sup>P</sup>	5,905 <sup>P</sup>	22,628 <sup>P</sup>	7,302 <sup>P</sup>
2009 95% CI (+/-)		125		135		136	102

**Notes**

- 1) Estimates were revised in March 2010 as a result of an improved methodology being adopted - see methodological note for further details.
- 2) 2009 estimates are provisional as 2010 LFS data and matched LFS-ILR data are not yet available; uplift to final results is estimated based on 2006 to 2008 data.
- 3) 2007 estimates are provisional as matched LFS-ILR data are not yet available for this year; uplift to final results is based on 2006 and 2008 data.
- 4) Estimates of percentage qualified to Level 4 and above are provisional pending finalisation of research into matched LFS-HESA data - see methodological note for further details.
- 5) Males aged 19 - 64 and females aged 19 - 59.
- 6) 'P' indicates provisional estimate - these estimates will be finalised in March 2011.

**Table 11.1: Level Of Highest Qualification Held By Economically Active Adults In England (Quarter 4)<sup>1, 2, 3</sup> - percentages**

<b>Year</b>	<b>Economically active adults<sup>5</sup></b> (thousands)	<b>Level 2 and above</b>	<b>Below Level 2 (incl no qualifications)</b>
2001	23,259	69.2 <sup>4</sup>	30.8 <sup>4</sup>
2006	24,233	74.0 <sup>4</sup>	26.0 <sup>4</sup>
2006	24,233	76.0	24.0
2007	24,389	77.1 <sup>P</sup>	22.9 <sup>P</sup>
2008	24,682	77.8	22.2
2009	24,691	78.9 <sup>P</sup>	21.1 <sup>P</sup>
2009 95% CI (+/-)		0.37	0.37

**Table 11.2: Level Of Highest Qualification Held By Economically Active Adults In England (Quarter 4)<sup>1, 2, 3</sup> - volumes (thousands)**

<b>Year</b>	<b>Economically active adults<sup>5</sup></b>	<b>Level 2 and above</b>	<b>Below Level 2 (incl no qualifications)</b>
2001	23,259	16,098 <sup>4</sup>	7,161 <sup>4</sup>
2006	24,233	17,933 <sup>4</sup>	6,300 <sup>4</sup>
2006	24,233	18,423	5,810
2007	24,389	18,814 <sup>P</sup>	5,575 <sup>P</sup>
2008	24,682	19,201	5,481
2009	24,691	19,483 <sup>P</sup>	5,208 <sup>P</sup>
2009 95% CI (+/-)		117	85

**Notes**

- 1) Estimates for 2006 onwards were revised in March 2010 as a result of an improved methodology being adopted - see methodological note for further details.
- 2) 2009 estimates are provisional as 2010 LFS data and matched LFS-ILR data are not yet available; uplift to final results is estimated based on 2006 to 2008 data.
- 3) 2007 estimates are provisional as matched LFS-ILR data are not yet available for this year; uplift to final results is based on 2006 and 2008 data.
- 4) The best estimate of change between 2001 and 2006 currently available is using the previous methodology - see methodological note for further details.
- 5) Economically active adults are defined as men aged 18 to 64 and women aged 18 to 59 either in employment or International Labour Organisation unemployed.
- 6) 'P' indicates provisional estimate - these estimates will be finalised in March 2011.

**Table 12: Vocational Qualification Achievements in the UK by Qualification Type, 2005 (October) to 2010 (September)**

Quarter	National Vocational Qualification	Occupational Qualification	Qualifications and Credit Framework Qualification	Vocationally Related Qualification	Other Vocational Qualifications	Total
October 2005 to December 2006	126,600	5,800	-	426,200	256,000	<b>814,500</b>
January 2006 to March 2006	116,300	6,100	-	432,700	230,800	<b>786,000</b>
April 2006 to June 2006	121,000	6,100	-	482,500	405,000	<b>1,014,700</b>
July 2006 to September 2006	234,600	7,000	-	750,200	610,600	<b>1,602,500</b>
<b>Total 2005/06 Academic Year</b>	<b>598,600</b>	<b>25,000</b>	<b>-</b>	<b>2,091,600</b>	<b>1,502,500</b>	<b>4,217,700</b>
October 2006 to December 2006	121,300	7,100	-	411,400	249,600	<b>789,400</b>
January 2007 to March 2007	126,600	5,700	-	406,800	251,400	<b>790,500</b>
April 2007 to June 2007	129,600	6,000	400	507,900	434,100	<b>1,078,000</b>
July 2007 to September 2007	252,900	8,000	500	920,500	773,800	<b>1,955,700</b>
<b>Total 2006/07 Academic Year</b>	<b>630,400</b>	<b>26,800</b>	<b>900</b>	<b>2,246,600</b>	<b>1,708,900</b>	<b>4,613,600</b>
October 2007 to December 2007	128,700	4,900	1,300	408,500	280,100	<b>823,400</b>
January 2008 to March 2008	140,700	4,900	4,600	426,000	345,100	<b>921,300</b>
April 2008 to June 2008	170,600	6,400	8,600	643,100	474,900	<b>1,303,700</b>
July 2008 to September 2008	287,900	8,300	19,200	984,000	983,700	<b>2,283,000</b>
<b>Total 2007/08 Academic Year</b>	<b>727,900</b>	<b>24,500</b>	<b>33,700</b>	<b>2,461,600</b>	<b>2,083,700</b>	<b>5,331,400</b>
October 2008 to December 2008	164,100	5,800	19,400	416,200	303,400	<b>908,900</b>
January 2009 to March 2009	169,600	5,300	42,200	409,900	390,200	<b>1,017,200</b>
April 2009 to June 2009	216,400	6,300	65,000	715,900	486,000	<b>1,489,600</b>
July 2009 to September 2009	372,600	9,100	102,000	1,064,900	1,143,300	<b>2,692,000</b>
<b>Total 2008/09 Academic Year</b>	<b>922,900</b>	<b>26,500</b>	<b>228,600</b>	<b>2,606,800</b>	<b>2,322,900</b>	<b>6,107,700</b>
October 2009 to December 2009	212,000	6,000	85,000	414,000	318,600	<b>1,035,600</b>
January 2010 to March 2010	203,900	5,100	135,000	386,300	352,300	<b>1,082,700</b>
April 2010 to June 2010	213,400	5,700	202,700	726,100	690,100	<b>1,838,000</b>
July 2010 to September 2010	327,300	6,400	337,900	1,067,100	1,588,300	<b>3,327,100</b>
<b>Total 2009/10 Academic Year</b>	<b>956,700</b>	<b>23,200</b>	<b>760,500</b>	<b>2,593,500</b>	<b>2,949,300</b>	<b>7,283,300</b>

**Notes**

1) This table covers all levels of vocational qualifications reported through Ofqual. Data are supplied by awarding organisations.

2) For data relating to Vocational Qualifications, the Academic year runs from October to September. For example, the 2005/06 academic year runs from October 2005 to September 2006.

3) Please see the general footnotes and Vocational Qualifications footnotes section for all information on these tables.

Table 13: Young People (Under 19s) FE and Apprenticeship Participation by Level (2010/11 - early estimates) – Learner Volumes

		Funded Learners
		2010/11 August to October (provisional)
Level		
<b>Total Learners</b>		<b>907,800</b>
<i>Participation of which...</i>	Below Level 2 (excluding Skills for Life)	234,200
	Skills for Life	384,600
	Full Level 2	239,300
	Full Level 3	396,000
	Level 2	418,600
	Level 3	490,500
	Level 4+	1,400
	No Level Assigned	544,700

Table 14: Adult (19+) FE and Skills Participation by Level (2010/11 - early estimates) – Learner Volumes

		Funded Learners
		2010/11 August to October (provisional)
Level		
<b>Total Learners</b>		<b>1,693,100</b>
<i>Participation of which...</i>	Below Level 2 (excluding Skills for Life)	165,100
	Skills for Life	490,400
	Full Level 2	519,500
	Full Level 3	333,700
	Level 2	667,900
	Level 3	375,500
	Level 4+	21,700
	No Level Assigned	387,000

Table 15: Overall FE and Skills Participation by Level (2010/11 - early estimates) – Learner Volumes

		Funded Learners
		2010/11 August to October (provisional)
Level		
<b>Total Learners</b>		<b>2,600,900</b>
<i>Participation of which...</i>	Below Level 2 (excluding Skills for Life)	399,300
	Skills for Life	875,000
	Full Level 2	758,900
	Full Level 3	729,700
	Level 2	1,086,500
	Level 3	866,000
	Level 4+	23,100
	No Level Assigned	931,600

**Notes**

1) These tables include Apprenticeships, Other Employer-Based Training, University for Industry, Adult Safeguarded Learning and Further Education/Learner Responsive Provision which includes General Further Education Colleges including Tertiary, Sixth Form Colleges, Special College - Agricultural and Horticultural Colleges and Art and Design Colleges, Specialist Colleges and External Institutions.

2) This table shows provisional estimates for 2010/11. Tables 1-3 show full year volumes for previous years. It is not possible to directly compare provisional 2010/11 estimates with figures for previous years.

3) Please see the general footnotes and FE and Skills footnotes section for further information on these tables.

**Table 16: FE and Skills - Skills for Life Participation by Level (2010/11 - early estimates) – Learner Volumes**

<b>Measure</b>	<b>Level</b>	<b>2010/11 August to October (provisional)</b>
	<b>Total Learners</b>	<b>875,000</b>
	of which literacy	576,300
	of which entry level	123,900
	of which level 1	242,000
	of which level 2	222,200
<b>Participation</b>	of which numeracy	533,900
	of which entry level	107,100
	of which level 1	237,200
	of which level 2	199,400
	of which ESOL	119,700
	of which entry level	95,700
	of which level 1	18,200
	of which level 2	6,700

**Notes**

1) This table shows provisional estimates for 2010/11. Skills for Life participation and achievement figures for earlier years are available in table 6 of this release.

2) Please see the general footnotes and the Skills for Life footnotes section for further information on these tables.

**Table 17: Adult Safeguarded Learning (2010/11 - early estimates) Participation by Type – Learner Volumes**

Measure	Provision Type	Funded Learners
		2010/11 August to October (provisional)
	<b>Total Learners</b>	<b>307,300</b>
<i>Participation</i>	of which Personal and Community Development Learning	239,400
	of which Neighbourhood Learning in Deprived Communities	8,200
	of which Family Literacy Language and Numeracy	17,700
	of which Wider Family Learning	17,200
	of which First Steps	28,600

**Notes**

- 1) Adult Safeguarded Learning participation and achievement figures for earlier years are available in table 7 of this release.
- 2) Please see the general footnotes and the Adult Safeguarded Learning footnotes section for further information on these tables.

**Table 18.1: Apprenticeship Programme Starts by Level and Age (2010/11 - early estimates)**

	Age	2010/11 Quarter 1 (provisional)
Apprenticeship (level 2)	Under 19	37,600
	19-24	20,600
	25+	18,200
	<b>Total</b>	<b>76,300</b>
Advanced Apprenticeship (level 3)	Under 19	16,600
	19-24	15,300
	25+	10,400
	<b>Total</b>	<b>42,300</b>
Higher Level Apprenticeship (level 4+)	Under 19	100
	19-24	700
	25+	400
	<b>Total</b>	<b>1,200</b>
All Apprenticeships	Under 19	54,200
	19-24	36,600
	25+	29,000
	<b>Total</b>	<b>119,800</b>

**Table 18.2: Apprenticeship Framework Achievements by Level and Age (2010/11 - early estimates)**

	Age	2010/11 Quarter 1 (provisional)
Apprenticeship (level 2)	Under 19	12,700
	19-24	10,000
	25+	4,200
	<b>Total</b>	<b>26,900</b>
Advanced Apprenticeship (level 3)	Under 19	4,800
	19-24	6,000
	25+	3,100
	<b>Total</b>	<b>13,900</b>
Higher Level Apprenticeship (level 4+)	Under 19	-
	19-24	300
	25+	-
	<b>Total</b>	<b>300</b>
All Apprenticeships	Under 19	17,400
	19-24	16,400
	25+	7,300
	<b>Total</b>	<b>41,100</b>

**Notes**

1) This table shows provisional estimates for 2010/11. Apprenticeship starts and achievements figures for earlier years are available in table 8 of this release. It is not possible to directly compare provisional 2010/11 estimates with figures for previous years.

2) Please see the general footnotes and the Apprenticeships footnotes section for further information on these tables.

**Table 19.1: Other Employer-Based Training Starts by Level (2010/11 - early estimates)**

<b>Level</b>	<b>2010/11 Quarter 1 (provisional)</b>
Foundation Learning Tier	300
Full Level 2	79,100
Other Level 2	-
Full Level 3	24,700
Other Level 3	100
Level 4 and above	800
Skills for Life	15,900
No Level Assigned	300
<b>Total</b>	<b>121,100</b>

**Table 19.2: Other Employer-Based Training Achievements by Level (2010/11 - early estimates)**

<b>Level</b>	<b>2010/11 Quarter 1 (provisional)</b>
Foundation Learning Tier	300
Full Level 2	69,200
Other Level 2	-
Full Level 3	16,000
Other Level 3	-
Level 4 and above	900
Skills for Life	9,800
No Level Assigned	200
<b>Total</b>	<b>96,600</b>

**Notes**

1) These tables show provisional estimates for 2010/11 of Other Employer-Based Training. Table 19.2 includes achievements for Train to Gain qualifications which were started prior to 2010/11. Figures for earlier years are available in table 9 of this release. It is not possible to directly compare provisional 2010/11 estimates with figures for previous years.

2) Please see the general footnotes and the Train to Gain/Other Employer-Based Training footnotes section for further information on these tables.