

**Transmission of material in this release is embargoed until 8:30 a.m. (EST) Friday, December 3, 2010**

USDL-10-1662

Technical information:

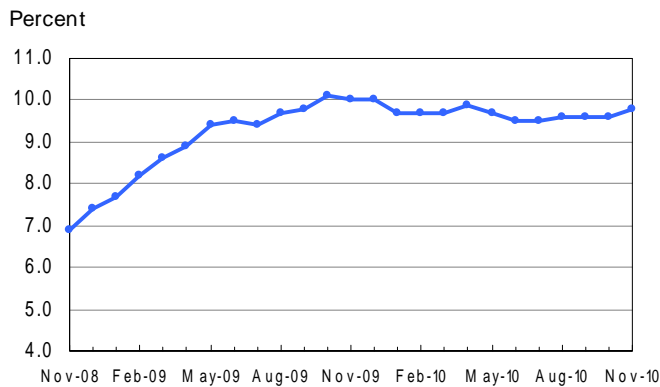
Household data: (202) 691-6378 • cpsinfo@bls.gov • www.bls.gov/cps  
Establishment data: (202) 691-6555 • cesinfo@bls.gov • www.bls.gov/ces

Media contact: (202) 691-5902 • PressOffice@bls.gov

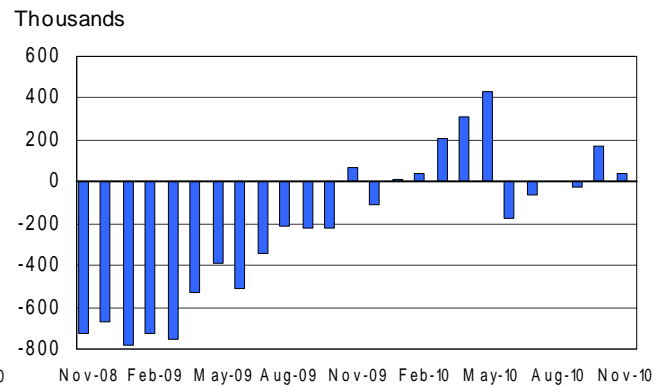
**THE EMPLOYMENT SITUATION – NOVEMBER 2010**

The **unemployment rate** edged up to 9.8 percent in November, and **nonfarm payroll employment** was little changed (+39,000), the U.S. Bureau of Labor Statistics reported today. Temporary help services and health care continued to add jobs over the month, while employment fell in retail trade. Employment in most major industries changed little in November.

**Chart 1. Unemployment rate, seasonally adjusted, November 2008 – November 2010**



**Chart 2. Nonfarm payroll employment over-the-month change, seasonally adjusted, November 2008 – November 2010**



**Household Survey Data**

The number of **unemployed persons** was 15.1 million in November. The **unemployment rate** edged up to 9.8 percent; it was 9.6 percent in each of the prior 3 months. (See table A-1.)

Among the **major worker groups**, the unemployment rates for adult men (10.0 percent), adult women (8.4 percent), whites (8.9 percent), and Hispanics (13.2 percent) edged up in November. The jobless rate for blacks (16.0 percent) showed little change over the month, while the rate for teenagers declined to 24.6 percent. The jobless rate for Asians was 7.6 percent, not seasonally adjusted. (See tables A-1, A-2, and A-3.)

Among the unemployed, the number of **job losers and persons who completed temporary jobs** rose by 390,000 to 9.5 million in November. The number of **long-term unemployed** (those jobless for 27 weeks and over) was little changed at 6.3 million and accounted for 41.9 percent of the unemployed. (See tables A-11 and A-12.)

The **civilian labor force participation rate** held at 64.5 percent in November, and the **employment-population ratio** was essentially unchanged at 58.2 percent. (See table A-1.)

The number of persons employed **part time for economic reasons** (sometimes referred to as involuntary part-time workers) was little changed over the month at 9.0 million. These individuals were working part time because their hours had been cut back or because they were unable to find a full-time job. (See table A-8.)

About 2.5 million persons were **marginally attached to the labor force** in November, up from 2.3 million a year earlier. (The data are not seasonally adjusted.) These individuals were not in the labor force, wanted and were available for work, and had looked for a job sometime in the prior 12 months. They were not counted as unemployed because they had not searched for work in the 4 weeks preceding the survey. (See table A-16.)

Among the marginally attached, there were 1.3 million **discouraged workers** in November, an increase of 421,000 from a year earlier. (The data are not seasonally adjusted.) Discouraged workers are persons not currently looking for work because they believe no jobs are available for them. The remaining 1.2 million persons marginally attached to the labor force had not searched for work in the 4 weeks preceding the survey for reasons such as school attendance or family responsibilities. (See table A-16.)

### **Establishment Survey Data**

Total **nonfarm payroll employment** changed little in November (+39,000). Job gains continued in temporary help services and in health care, while employment fell in retail trade. Since December 2009, total payroll employment has increased by an average of 86,000 per month. (See table B-1.)

Within professional and business services, employment in **temporary help services** continued to increase in November (+40,000) and has risen by 494,000 since September 2009.

**Health care** continued to add jobs over the month, with a gain of 19,000. Much of the increase occurred in hospitals (+8,000).

Employment in **mining** continued to trend up over the month. Support activities for mining added 6,000 jobs in November and has added 74,000 jobs since October 2009.

**Retail trade** employment fell by 28,000 in November. Job losses occurred in department stores (-9,000) and in furniture and home furnishings stores (-5,000).

Employment in **manufacturing** was little changed over the month (-13,000). Following job growth earlier in 2010, employment has been relatively flat, on net, since May. Employment in most other major industries changed little in November.

The **average workweek for all employees** on private nonfarm payrolls held at 34.3 hours in November. The manufacturing workweek for all employees also was unchanged, at 40.3 hours, and factory

overtime remained at 3.1 hours. The average workweek for **production and nonsupervisory employees** on private nonfarm payrolls decreased by 0.1 hour to 33.5 hours. (See tables B-2 and B-7.)

In November, **average hourly earnings of all employees** on private nonfarm payrolls increased by 1 cent to \$22.75. Over the past 12 months, average hourly earnings have increased by 1.6 percent. In November, average hourly earnings of private-sector **production and nonsupervisory employees** were unchanged at \$19.19. (See tables B-3 and B-8.)

The change in total nonfarm payroll employment for September was revised from -41,000 to -24,000, and the change for October was revised from +151,000 to +172,000.

---

**The Employment Situation for December is scheduled to be released on Friday, January 7, 2011, at 8:30 a.m. (EST).**

#### **Revision of Seasonally Adjusted Household Survey Data**

In accordance with usual practice, The Employment Situation release for December 2010, scheduled for January 7, 2011, will incorporate annual revisions in seasonally adjusted unemployment and other labor force series from the household survey. Seasonally adjusted data for the most recent 5 years are subject to revision.

#### **Upcoming Changes to Establishment Survey Data**

Effective with the release of January 2011 data on February 4, 2011, the establishment survey will begin estimating net business birth/death adjustment factors on a quarterly basis, replacing the current practice of estimating the factors annually. This will allow the establishment survey to incorporate information from the Quarterly Census of Employment and Wages into the birth/death adjustment factors as soon as it becomes available and thereby improve the factors. Additional information on this change is available at [www.bls.gov/ces/ces\\_quarterly\\_birthdeath.pdf](http://www.bls.gov/ces/ces_quarterly_birthdeath.pdf).

### **Upcoming Changes to Household Survey Data**

Effective with the release of January 2011 data on February 4, 2011, two additional data series—"Self-employed workers, unincorporated" and "Self-employed workers, incorporated"—will be added to table A-9. As a result, the format of table A-9 will change. Data on the incorporated self-employed have not previously been published on a regular basis.

Also, in table A-8, the data series currently labeled "Self-employed workers" (one for Agriculture and related industries and one for Nonagricultural industries) will be renamed "Self-employed workers, unincorporated." This is strictly a change in title and not in definition; the data shown will not be affected. This change is being made to clarify that these data only include persons operating unincorporated businesses. A similar title change will be made to one data series in table A-14.

In addition, a change affecting data collected on unemployment duration will be introduced in the household survey in January 2011. Presently, the Current Population Survey can record unemployment durations of up to 2 years. Starting with data collected for January 2011, respondents will be able to report unemployment durations of up to 5 years. This change will likely affect one data series in this news release: the average (mean) duration of unemployment, which is found in table A-12. The change does not affect the estimate of total unemployment or other data series on duration of unemployment. Additional information is available at [www.bls.gov/cps/duration.htm](http://www.bls.gov/cps/duration.htm).

Beginning with data for January 2011, occupation estimates in table A-13 will reflect the introduction of the 2010 Census occupation classification system into the household survey. This occupation classification system is derived from the 2010 Standard Occupational Classification system. Historical data will not be revised.

# HOUSEHOLD DATA

## Summary table A. Household data, seasonally adjusted

[Numbers in thousands]

Category	Nov. 2009	Sept. 2010	Oct. 2010	Nov. 2010	Change from: Oct. 2010- Nov. 2010
<b>Employment status</b>					
Civilian noninstitutional population.....	236,743	238,322	238,530	238,715	185
Civilian labor force.....	153,720	154,158	153,904	154,007	103
Participation rate.....	64.9	64.7	64.5	64.5	0.0
Employed.....	138,381	139,391	139,061	138,888	-173
Employment-population ratio.....	58.5	58.5	58.3	58.2	-0.1
Unemployed.....	15,340	14,767	14,843	15,119	276
Unemployment rate.....	10.0	9.6	9.6	9.8	0.2
Not in labor force.....	83,022	84,164	84,626	84,708	82
<b>Unemployment rates</b>					
Total, 16 years and over.....	10.0	9.6	9.6	9.8	0.2
Adult men (20 years and over).....	10.4	9.8	9.7	10.0	0.3
Adult women (20 years and over).....	8.0	8.0	8.1	8.4	0.3
Teenagers (16 to 19 years).....	26.8	26.0	27.1	24.6	-2.5
White.....	9.3	8.7	8.8	8.9	0.1
Black or African American.....	15.6	16.1	15.7	16.0	0.3
Asian (not seasonally adjusted).....	7.3	6.4	7.1	7.6	-
Hispanic or Latino ethnicity.....	12.7	12.4	12.6	13.2	0.6
Total, 25 years and over.....	8.5	8.3	8.2	8.4	0.2
Less than a high school diploma.....	15.0	15.4	15.3	15.7	0.4
High school graduates, no college.....	10.4	10.0	10.1	10.0	-0.1
Some college or associate degree.....	9.0	9.1	8.5	8.7	0.2
Bachelor's degree and higher.....	4.9	4.4	4.7	5.1	0.4
<b>Reason for unemployment</b>					
Job losers and persons who completed temporary jobs.....	9,965	9,401	9,108	9,498	390
Job leavers.....	929	807	854	862	8
Reentrants.....	3,221	3,436	3,512	3,451	-61
New entrants.....	1,270	1,187	1,273	1,238	-35
<b>Duration of unemployment</b>					
Less than 5 weeks.....	2,774	2,891	2,657	2,828	171
5 to 14 weeks.....	3,517	3,350	3,458	3,359	-99
15 to 26 weeks.....	3,075	2,336	2,519	2,576	57
27 weeks and over.....	5,901	6,123	6,206	6,313	107
<b>Employed persons at work part time</b>					
Part time for economic reasons.....	9,225	9,472	9,154	8,972	-182
Slack work or business conditions.....	6,684	6,733	6,232	6,038	-194
Could only find part-time work.....	2,238	2,456	2,572	2,569	-3
Part time for noneconomic reasons.....	18,354	18,234	18,211	18,365	154
<b>Persons not in the labor force (not seasonally adjusted)</b>					
Marginally attached to the labor force.....	2,323	2,548	2,602	2,531	-
Discouraged workers.....	861	1,209	1,219	1,282	-

- Over-the-month changes are not displayed for not seasonally adjusted data.

NOTE: Persons whose ethnicity is identified as Hispanic or Latino may be of any race. Detail for the seasonally adjusted data shown in this table will not necessarily add to totals because of the independent seasonal adjustment of the various series. Updated population controls are introduced annually with the release of January data.

**ESTABLISHMENT DATA**  
**Summary table B. Establishment data, seasonally adjusted**

Category	Nov. 2009	Sept. 2010	Oct. 2010 <sup>p</sup>	Nov. 2010 <sup>p</sup>
<b>EMPLOYMENT BY SELECTED INDUSTRY</b> (Over-the-month change, in thousands)				
Total nonfarm.....	64	-24	172	39
Total private.....	75	112	160	50
Goods-producing.....	-33	-10	3	-15
Mining and logging.....	7	7	11	3
Construction.....	-15	-11	3	-5
Manufacturing.....	-25	-6	-11	-13
Durable goods <sup>1</sup> .....	-23	5	-4	-5
Motor vehicles and parts.....	-4.6	-0.9	1.2	-1.5
Nondurable goods.....	-2	-11	-7	-8
Private service-providing <sup>1</sup> .....	108	122	157	65
Wholesale trade.....	-6.2	4.5	10.0	4.7
Retail trade.....	8.8	-3.9	13.0	-28.1
Transportation and warehousing.....	7.2	16.5	0.7	11.6
Information.....	-12	-7	-1	1
Financial activities.....	2	4	0	-9
Professional and business services <sup>1</sup> .....	106	28	50	53
Temporary help services.....	94.7	27.3	34.7	39.5
Education and health services <sup>1</sup> .....	31	26	64	30
Health care and social assistance.....	26.1	34.2	39.9	23.1
Leisure and hospitality.....	-21	38	-10	11
Other services.....	-6	17	30	-8
Government.....	-11	-136	12	-11
<b>WOMEN AND PRODUCTION AND NONSUPERVISORY EMPLOYEES</b> AS A PERCENT OF ALL EMPLOYEES <sup>2</sup>				
Total nonfarm women employees.....	49.9	49.6	49.6	49.6
Total private women employees.....	48.4	48.1	48.1	48.1
Total private production and nonsupervisory employees.....	82.4	82.4	82.4	82.4
<b>HOURS AND EARNINGS</b> ALL EMPLOYEES				
<b>Total private</b>				
Average weekly hours.....	33.9	34.2	34.3	34.3
Average hourly earnings.....	\$ 22.39	\$ 22.68	\$ 22.74	\$ 22.75
Average weekly earnings.....	\$759.02	\$ 775.66	\$779.98	\$780.33
Index of aggregate weekly hours (2007=100) <sup>3</sup> .....	91.1	92.6	93.0	93.1
Over-the-month percent change.....	0.7	-0.2	0.4	0.1
Index of aggregate weekly payrolls (2007=100) <sup>4</sup> .....	97.2	100.2	100.9	101.0
Over-the-month percent change.....	0.8	0.0	0.7	0.1
<b>HOURS AND EARNINGS</b> PRODUCTION AND NONSUPERVISORY EMPLOYEES				
<b>Total private</b>				
Average weekly hours.....	33.2	33.5	33.6	33.5
Average hourly earnings.....	\$ 18.80	\$ 19.11	\$ 19.19	\$ 19.19
Average weekly earnings.....	\$624.16	\$ 640.19	\$644.78	\$642.87
Index of aggregate weekly hours (2002=100) <sup>3</sup> .....	97.9	99.7	100.1	99.9
Over-the-month percent change.....	0.7	0.1	0.4	-0.2
Index of aggregate weekly payrolls (2002=100) <sup>4</sup> .....	123.0	127.3	128.4	128.1
Over-the-month percent change.....	0.8	0.2	0.9	-0.2
<b>DIFFUSION INDEX</b> (Over 1-month span) <sup>5</sup>				
Total private.....	46.8	54.5	58.0	52.0
Manufacturing.....	45.7	52.4	43.9	43.3

1 Includes other industries, not shown separately.

2 Data relate to production employees in mining and logging and manufacturing, construction employees in construction, and nonsupervisory employees in the service-providing industries.

3 The indexes of aggregate weekly hours are calculated by dividing the current month's estimates of aggregate hours by the corresponding annual average aggregate hours.

4 The indexes of aggregate weekly payrolls are calculated by dividing the current month's estimates of aggregate weekly payrolls by the corresponding annual average aggregate weekly payrolls.

5 Figures are the percent of industries with employment increasing plus one-half of the industries with unchanged employment, where 50 percent indicates an equal balance between industries with increasing and decreasing employment.

p Preliminary

## **Frequently Asked Questions about Employment and Unemployment Estimates**

### **Why are there two monthly measures of employment?**

The household survey and establishment survey both produce sample-based estimates of employment and both have strengths and limitations. The establishment survey employment series has a smaller margin of error on the measurement of month-to-month change than the household survey because of its much larger sample size. An over-the-month employment change of about 100,000 is statistically significant in the establishment survey, while the threshold for a statistically significant change in the household survey is about 400,000. However, the household survey has a more expansive scope than the establishment survey because it includes the self-employed, unpaid family workers, agricultural workers, and private household workers, who are excluded by the establishment survey. The household survey also provides estimates of employment for demographic groups.

### **Are undocumented immigrants counted in the surveys?**

It is likely that both surveys include at least some undocumented immigrants. However, neither the establishment nor the household survey is designed to identify the legal status of workers. Therefore, it is not possible to determine how many are counted in either survey. The establishment survey does not collect data on the legal status of workers. The household survey does include questions which identify the foreign and native born, but it does not include questions about the legal status of the foreign born.

### **Why does the establishment survey have revisions?**

The establishment survey revises published estimates to improve its data series by incorporating additional information that was not available at the time of the initial publication of the estimates. The establishment survey revises its initial monthly estimates twice, in the immediately succeeding 2 months, to incorporate additional sample receipts from respondents in the survey and recalculated seasonal adjustment factors. For more information on the monthly revisions, please visit [www.bls.gov/ces/cesrevinfo.htm](http://www.bls.gov/ces/cesrevinfo.htm).

On an annual basis, the establishment survey incorporates a benchmark revision that re-anchors estimates to nearly complete employment counts available from unemployment insurance tax records. The benchmark helps to control for sampling and modeling errors in the estimates. For more information on the annual benchmark revision, please visit [www.bls.gov/web/cesbmart.htm](http://www.bls.gov/web/cesbmart.htm).

### **Does the establishment survey sample include small firms?**

Yes; about 40 percent of the establishment survey sample is comprised of business establishments with fewer than 20 employees. The establishment survey sample is designed to maximize the reliability of the total nonfarm employment estimate; firms from all size classes and industries are appropriately sampled to achieve that goal.

### **Does the establishment survey account for employment from new businesses?**

Yes; monthly establishment survey estimates include an adjustment to account for the net employment change generated by business births and deaths. The adjustment comes from an econometric model that forecasts the monthly net jobs impact of business births and deaths based on the actual past values of the net impact that can be observed with a lag from the Quarterly Census of Employment and Wages. The establishment survey uses modeling rather than sampling for this purpose because the survey is not

immediately able to bring new businesses into the sample. There is an unavoidable lag between the birth of a new firm and its appearance on the sampling frame and availability for selection. BLS adds new businesses to the survey twice a year.

**Is the count of unemployed persons limited to just those people receiving unemployment insurance benefits?**

No; the estimate of unemployment is based on a monthly sample survey of households. All persons who are without jobs and are actively seeking and available to work are included among the unemployed. (People on temporary layoff are included even if they do not actively seek work.) There is no requirement or question relating to unemployment insurance benefits in the monthly survey.

**Does the official unemployment rate exclude people who have stopped looking for work?**

Yes; however, there are separate estimates of persons outside the labor force who want a job, including those who have stopped looking because they believe no jobs are available (discouraged workers). In addition, alternative measures of labor underutilization (some of which include discouraged workers and other groups not officially counted as unemployed) are published each month in The Employment Situation news release.



# Technical Note

This news release presents statistics from two major surveys, the Current Population Survey (household survey) and the Current Employment Statistics survey (establishment survey). The household survey provides information on the labor force, employment, and unemployment that appears in the "A" tables, marked HOUSEHOLD DATA. It is a sample survey of about 60,000 households conducted by the U.S. Census Bureau for the U.S. Bureau of Labor Statistics (BLS).

The establishment survey provides information on employment, hours, and earnings of employees on nonfarm payrolls; the data appear in the "B" tables, marked ESTABLISHMENT DATA. BLS collects these data each month from the payroll records of a sample of nonagricultural business establishments. The sample includes about 140,000 businesses and government agencies representing approximately 410,000 worksites and is drawn from a sampling frame of roughly 8.9 million unemployment insurance tax accounts. The active sample includes approximately one-third of all nonfarm payroll employees.

For both surveys, the data for a given month relate to a particular week or pay period. In the household survey, the reference period is generally the calendar week that contains the 12th day of the month. In the establishment survey, the reference period is the pay period including the 12th, which may or may not correspond directly to the calendar week.

## Coverage, definitions, and differences between surveys

**Household survey.** The sample is selected to reflect the entire civilian noninstitutional population. Based on responses to a series of questions on work and job search activities, each person 16 years and over in a sample household is classified as employed, unemployed, or not in the labor force.

People are classified as *employed* if they did any work at all as paid employees during the reference week; worked in their own business, profession, or on their own farm; or worked without pay at least 15 hours in a family business or farm. People are also counted as employed if they were temporarily absent from their jobs because of illness, bad weather, vacation, labor-management disputes, or personal reasons.

People are classified as *unemployed* if they meet all of the following criteria: they had no employment during the reference week; they were available for work at that time; and they made specific efforts to find employment sometime during the 4-week period ending with the reference week. Persons laid off from a job and expecting recall need not be looking for work to be counted as unemployed. The unemployment data derived from the household survey in no way depend upon the eligibility for or receipt of unemployment insurance benefits.

The *civilian labor force* is the sum of employed and unemployed persons. Those not classified as employed or unemployed are *not in the labor force*. The *unemployment rate* is the number unemployed as a percent of the labor force. The *labor force participation rate* is the labor force as a percent of the population, and the *employment-population ratio* is the employed as a percent of the population. Additional information about the household survey can be found at [www.bls.gov/cps/documentation.htm](http://www.bls.gov/cps/documentation.htm).

**Establishment survey.** The sample establishments are drawn from private nonfarm businesses such as factories, offices, and stores, as well as from federal, state, and local government entities. *Employees on nonfarm payrolls* are those who received pay for any part of the reference pay period, including persons on paid leave. Persons are counted in each job they hold. *Hours and earnings* data are produced for the private sector for all employees and for production and nonsupervisory employees. *Production and nonsupervisory employees* are defined as production and related employees in manufacturing and mining and logging, construction workers in construction, and non-supervisory employees in private service-providing industries.

Industries are classified on the basis of an establishment's principal activity in accordance with the 2007 version of the North American Industry Classification System. Additional information about the establishment survey can be found at [www.bls.gov/ces/#technical](http://www.bls.gov/ces/#technical).

**Differences in employment estimates.** The numerous conceptual and methodological differences between the household and establishment surveys result in important distinctions in the employment estimates derived from the surveys. Among these are:

- The household survey includes agricultural workers, the self-employed, unpaid family workers, and private household workers among the employed. These groups are excluded from the establishment survey.
- The household survey includes people on unpaid leave among the employed. The establishment survey does not.
- The household survey is limited to workers 16 years of age and older. The establishment survey is not limited by age.
- The household survey has no duplication of individuals, because individuals are counted only once, even if they hold more than one job. In the establishment survey, employees working at more than one job and thus appearing on more than one payroll are counted separately for each appearance.

## Seasonal adjustment

Over the course of a year, the size of the nation's labor force and the levels of employment and unemployment undergo regularly occurring fluctuations. These events may result from seasonal changes in weather, major holidays, and the opening and closing of schools. The effect of such seasonal variation can be very large.

Because these seasonal events follow a more or less regular pattern each year, their influence on the level of a series can be tempered by adjusting for regular seasonal variation. These adjustments make nonseasonal developments, such as declines in employment or increases in the participation of women in the labor force, easier to spot. For example, in the household survey, the large number of youth entering the labor force each June is likely to obscure any other changes that have taken place relative to May, making it difficult to determine if the level of economic activity has risen or declined. Similarly, in the establishment survey, payroll employment in education declines by about 20 percent at the end of the spring term and later rises with the start of the fall term, obscuring the underlying employment trends in the industry. Because seasonal employment changes at the end and beginning of the school year can be estimated, the statistics can be adjusted to make underlying employment patterns more discernable. The seasonally adjusted figures provide a more useful tool with which to analyze changes in month-to-month economic activity.

Many seasonally adjusted series are independently adjusted in both the household and establishment surveys. However, the adjusted series for many major estimates, such as total payroll employment, employment in most major sectors, total employment, and unemployment are computed by aggregating independently adjusted component series. For example, total unemployment is derived by summing the adjusted series for four major age-sex components; this differs from the unemployment estimate that would be obtained by directly adjusting the total or by combining the duration, reasons, or more detailed age categories.

For both the household and establishment surveys, a concurrent seasonal adjustment methodology is used in which new seasonal factors are calculated each month using all relevant data, up to and including the data for the current month. In the household survey, new seasonal factors are used to adjust only the current month's data. In the establishment survey, however, new seasonal factors are used each month to adjust the three most recent monthly estimates. The prior 2 months are routinely revised to incorporate additional sample reports and recalculated seasonal adjustment factors. In both surveys, 5-year revisions to historical data are made once a year.

## Reliability of the estimates

Statistics based on the household and establishment surveys are subject to both sampling and nonsampling

error. When a sample rather than the entire population is surveyed, there is a chance that the sample estimates may differ from the "true" population values they represent. The exact difference, or *sampling error*, varies depending on the particular sample selected, and this variability is measured by the standard error of the estimate. There is about a 90-percent chance, or level of confidence, that an estimate based on a sample will differ by no more than 1.6 standard errors from the "true" population value because of sampling error. BLS analyses are generally conducted at the 90-percent level of confidence.

For example, the confidence interval for the monthly change in total nonfarm employment from the establishment survey is on the order of plus or minus 100,000. Suppose the estimate of nonfarm employment increases by 50,000 from one month to the next. The 90-percent confidence interval on the monthly change would range from -50,000 to +150,000 (50,000 +/- 100,000). These figures do not mean that the sample results are off by these magnitudes, but rather that there is about a 90-percent chance that the "true" over-the-month change lies within this interval. Since this range includes values of less than zero, we could not say with confidence that nonfarm employment had, in fact, increased that month. If, however, the reported nonfarm employment rise was 250,000, then all of the values within the 90-percent confidence interval would be greater than zero. In this case, it is likely (at least a 90-percent chance) that nonfarm employment had, in fact, risen that month. At an unemployment rate of around 5.5 percent, the 90-percent confidence interval for the monthly change in unemployment as measured by the household survey is about +/- 280,000, and for the monthly change in the unemployment rate it is about +/- 0.19 percentage point.

In general, estimates involving many individuals or establishments have lower standard errors (relative to the size of the estimate) than estimates which are based on a small number of observations. The precision of estimates also is improved when the data are cumulated over time, such as for quarterly and annual averages.

The household and establishment surveys are also affected by *nonsampling error*, which can occur for many reasons, including the failure to sample a segment of the population, inability to obtain information for all respondents in the sample, inability or unwillingness of respondents to provide correct information on a timely basis, mistakes made by respondents, and errors made in the collection or processing of the data.

For example, in the establishment survey, estimates for the most recent 2 months are based on incomplete returns; for this reason, these estimates are labeled preliminary in the tables. It is only after two successive revisions to a monthly estimate, when nearly all sample reports have been received, that the estimate is considered final.

Another major source of nonsampling error in the establishment survey is the inability to capture, on a timely basis, employment generated by new firms. To correct for this systematic underestimation of employment growth, an estimation procedure with two components is used to

account for business births. The first component excludes employment losses from business deaths from sample-based estimation in order to offset the missing employment gains from business births. This is incorporated into the sample-based estimation procedure by simply not reflecting sample units going out of business, but imputing to them the same employment trend as the other firms in the sample. This procedure accounts for most of the net birth/death employment.

The second component is an ARIMA time series model designed to estimate the residual net birth/death employment not accounted for by the imputation. The historical time series used to create and test the ARIMA model was derived from the unemployment insurance universe micro-level database, and reflects the actual residual net of births and deaths over the past 5 years.

The sample-based estimates from the establishment survey are adjusted once a year (on a lagged basis) to

universe counts of payroll employment obtained from administrative records of the unemployment insurance program. The difference between the March sample-based employment estimates and the March universe counts is known as a benchmark revision, and serves as a rough proxy for total survey error. The new benchmarks also incorporate changes in the classification of industries. Over the past decade, absolute benchmark revisions for total nonfarm employment have averaged 0.3 percent, with a range from -0.7 to 0.6 percent.

#### **Other information**

Information in this release will be made available to sensory impaired individuals upon request. Voice phone: (202) 691-5200; Federal Relay Service: (800) 877-8339.

# HOUSEHOLD DATA

## Table A-1. Employment status of the civilian population by sex and age

[Numbers in thousands]

Employment status, sex, and age	Not seasonally adjusted			Seasonally adjusted <sup>1</sup>					
	Nov. 2009	Oct. 2010	Nov. 2010	Nov. 2009	July 2010	Aug. 2010	Sept. 2010	Oct. 2010	Nov. 2010
<b>TOTAL</b>									
Civilian noninstitutional population.....	236,743	238,530	238,715	236,743	237,890	238,099	238,322	238,530	238,715
Civilian labor force.....	153,539	153,652	153,698	153,720	153,560	154,110	154,158	153,904	154,007
Participation rate.....	64.9	64.4	64.4	64.9	64.6	64.7	64.7	64.5	64.5
Employed.....	139,132	139,749	139,415	138,381	138,960	139,250	139,391	139,061	138,888
Employment-population ratio.....	58.8	58.6	58.4	58.5	58.4	58.5	58.5	58.3	58.2
Unemployed.....	14,407	13,903	14,282	15,340	14,599	14,860	14,767	14,843	15,119
Unemployment rate.....	9.4	9.0	9.3	10.0	9.5	9.6	9.6	9.6	9.8
Not in labor force.....	83,204	84,878	85,017	83,022	84,330	83,989	84,164	84,626	84,708
Persons who currently want a job.....	5,618	5,867	5,832	6,043	5,886	5,972	6,202	6,255	6,218
<b>Men, 16 years and over</b>									
Civilian noninstitutional population.....	114,632	115,542	115,640	114,632	115,207	115,317	115,433	115,542	115,640
Civilian labor force.....	81,612	81,675	81,651	81,964	81,962	82,299	82,187	81,969	82,030
Participation rate.....	71.2	70.7	70.6	71.5	71.1	71.4	71.2	70.9	70.9
Employed.....	73,107	73,970	73,540	72,794	73,454	73,608	73,581	73,454	73,329
Employment-population ratio.....	63.8	64.0	63.6	63.5	63.8	63.8	63.7	63.6	63.4
Unemployed.....	8,505	7,705	8,111	9,171	8,507	8,691	8,606	8,514	8,701
Unemployment rate.....	10.4	9.4	9.9	11.2	10.4	10.6	10.5	10.4	10.6
Not in labor force.....	33,019	33,867	33,988	32,667	33,245	33,017	33,247	33,574	33,610
<b>Men, 20 years and over</b>									
Civilian noninstitutional population.....	106,018	107,007	107,114	106,018	106,641	106,761	106,887	107,007	107,114
Civilian labor force.....	78,723	78,859	78,822	78,901	78,971	79,332	79,307	78,989	79,029
Participation rate.....	74.3	73.7	73.6	74.4	74.1	74.3	74.2	73.8	73.8
Employed.....	71,112	71,960	71,471	70,662	71,332	71,521	71,545	71,363	71,129
Employment-population ratio.....	67.1	67.2	66.7	66.7	66.9	67.0	66.9	66.7	66.4
Unemployed.....	7,611	6,899	7,352	8,239	7,638	7,811	7,762	7,626	7,900
Unemployment rate.....	9.7	8.7	9.3	10.4	9.7	9.8	9.8	9.7	10.0
Not in labor force.....	27,295	28,147	28,291	27,117	27,671	27,429	27,581	28,018	28,085
<b>Women, 16 years and over</b>									
Civilian noninstitutional population.....	122,111	122,988	123,075	122,111	122,683	122,783	122,889	122,988	123,075
Civilian labor force.....	71,927	71,977	72,046	71,756	71,598	71,811	71,971	71,935	71,977
Participation rate.....	58.9	58.5	58.5	58.8	58.4	58.5	58.6	58.5	58.5
Employed.....	66,024	65,779	65,875	65,587	65,506	65,642	65,811	65,607	65,559
Employment-population ratio.....	54.1	53.5	53.5	53.7	53.4	53.5	53.6	53.3	53.3
Unemployed.....	5,902	6,198	6,171	6,169	6,092	6,169	6,161	6,329	6,418
Unemployment rate.....	8.2	8.6	8.6	8.6	8.5	8.6	8.6	8.8	8.9
Not in labor force.....	50,184	51,011	51,029	50,355	51,085	50,972	50,918	51,053	51,098
<b>Women, 20 years and over</b>									
Civilian noninstitutional population.....	113,737	114,704	114,801	113,737	114,372	114,481	114,596	114,704	114,801
Civilian labor force.....	69,049	69,131	69,374	68,742	68,747	68,844	69,091	69,003	69,158
Participation rate.....	60.7	60.3	60.4	60.4	60.1	60.1	60.3	60.2	60.2
Employed.....	63,787	63,645	63,779	63,269	63,314	63,356	63,586	63,386	63,370
Employment-population ratio.....	56.1	55.5	55.6	55.6	55.4	55.3	55.5	55.3	55.2
Unemployed.....	5,262	5,487	5,595	5,473	5,433	5,488	5,505	5,617	5,788
Unemployment rate.....	7.6	7.9	8.1	8.0	7.9	8.0	8.0	8.1	8.4
Not in labor force.....	44,688	45,573	45,427	44,994	45,625	45,637	45,505	45,701	45,643
<b>Both sexes, 16 to 19 years</b>									
Civilian noninstitutional population.....	16,988	16,819	16,800	16,988	16,877	16,857	16,839	16,819	16,800
Civilian labor force.....	5,767	5,661	5,501	6,077	5,843	5,934	5,760	5,912	5,821
Participation rate.....	33.9	33.7	32.7	35.8	34.6	35.2	34.2	35.2	34.6
Employed.....	4,233	4,144	4,165	4,450	4,315	4,373	4,261	4,312	4,389
Employment-population ratio.....	24.9	24.6	24.8	26.2	25.6	25.9	25.3	25.6	26.1
Unemployed.....	1,534	1,517	1,335	1,627	1,528	1,561	1,500	1,600	1,432
Unemployment rate.....	26.6	26.8	24.3	26.8	26.1	26.3	26.0	27.1	24.6
Not in labor force.....	11,221	11,158	11,299	10,911	11,034	10,923	11,079	10,907	10,979

<sup>1</sup> The population figures are not adjusted for seasonal variation; therefore, identical numbers appear in the unadjusted and seasonally adjusted columns.

NOTE: Updated population controls are introduced annually with the release of January data.

# HOUSEHOLD DATA

## Table A-2. Employment status of the civilian population by race, sex, and age

[Numbers in thousands]

Employment status, race, sex, and age	Not seasonally adjusted			Seasonally adjusted <sup>1</sup>					
	Nov. 2009	Oct. 2010	Nov. 2010	Nov. 2009	July 2010	Aug. 2010	Sept. 2010	Oct. 2010	Nov. 2010
<b>WHITE</b>									
Civilian noninstitutional population.....	191,516	192,527	192,641	191,516	192,109	192,245	192,391	192,527	192,641
Civilian labor force.....	125,170	124,749	124,735	125,258	125,060	125,362	125,404	124,907	124,833
Participation rate.....	65.4	64.8	64.7	65.4	65.1	65.2	65.2	64.9	64.8
Employed.....	114,403	114,588	114,254	113,669	114,300	114,470	114,500	113,974	113,673
Employment-population ratio.....	59.7	59.5	59.3	59.4	59.5	59.5	59.5	59.2	59.0
Unemployed.....	10,767	10,161	10,481	11,589	10,760	10,893	10,904	10,933	11,160
Unemployment rate.....	8.6	8.1	8.4	9.3	8.6	8.7	8.7	8.8	8.9
Not in labor force.....	66,346	67,778	67,907	66,258	67,049	66,883	66,987	67,620	67,808
<b>Men, 20 years and over</b>									
Civilian labor force.....	65,286	65,066	65,074	65,387	65,412	65,590	65,583	65,203	65,104
Participation rate.....	74.9	74.1	74.1	75.0	74.7	74.9	74.8	74.3	74.1
Employed.....	59,438	59,872	59,492	58,996	59,662	59,738	59,755	59,431	59,102
Employment-population ratio.....	68.2	68.2	67.7	67.7	68.2	68.2	68.1	67.7	67.3
Unemployed.....	5,848	5,194	5,583	6,390	5,750	5,852	5,829	5,771	6,002
Unemployment rate.....	9.0	8.0	8.6	9.8	8.8	8.9	8.9	8.9	9.2
<b>Women, 20 years and over</b>									
Civilian labor force.....	55,165	55,076	55,155	54,908	54,818	54,848	55,011	54,829	54,946
Participation rate.....	60.4	59.9	60.0	60.1	59.8	59.8	59.9	59.6	59.7
Employed.....	51,334	51,185	51,195	50,852	50,943	50,979	51,062	50,819	50,791
Employment-population ratio.....	56.2	55.7	55.7	55.6	55.5	55.5	55.6	55.3	55.2
Unemployed.....	3,831	3,891	3,960	4,056	3,875	3,869	3,949	4,010	4,156
Unemployment rate.....	6.9	7.1	7.2	7.4	7.1	7.1	7.2	7.3	7.6
<b>Both sexes, 16 to 19 years</b>									
Civilian labor force.....	4,719	4,607	4,506	4,963	4,830	4,924	4,810	4,875	4,783
Participation rate.....	36.3	35.9	35.2	38.2	37.5	38.3	37.5	38.0	37.3
Employed.....	3,631	3,531	3,568	3,820	3,695	3,752	3,683	3,723	3,781
Employment-population ratio.....	28.0	27.5	27.9	29.4	28.7	29.2	28.7	29.0	29.5
Unemployed.....	1,088	1,076	938	1,142	1,135	1,172	1,127	1,152	1,002
Unemployment rate.....	23.0	23.4	20.8	23.0	23.5	23.8	23.4	23.6	20.9
<b>BLACK OR AFRICAN AMERICAN</b>									
Civilian noninstitutional population.....	28,404	28,831	28,865	28,404	28,718	28,755	28,794	28,831	28,865
Civilian labor force.....	17,606	17,913	17,979	17,660	17,651	17,879	17,754	17,936	18,031
Participation rate.....	62.0	62.1	62.3	62.2	61.5	62.2	61.7	62.2	62.5
Employed.....	14,938	15,199	15,206	14,904	14,896	14,967	14,895	15,122	15,149
Employment-population ratio.....	52.6	52.7	52.7	52.5	51.9	52.0	51.7	52.4	52.5
Unemployed.....	2,667	2,715	2,772	2,757	2,755	2,911	2,860	2,814	2,882
Unemployment rate.....	15.2	15.2	15.4	15.6	15.6	16.3	16.1	15.7	16.0
Not in labor force.....	10,798	10,918	10,886	10,744	11,067	10,877	11,040	10,895	10,834
<b>Men, 20 years and over</b>									
Civilian labor force.....	7,911	8,076	8,084	7,915	8,004	8,082	8,064	8,073	8,101
Participation rate.....	69.0	69.0	69.0	69.0	68.8	69.4	69.1	69.0	69.1
Employed.....	6,637	6,837	6,815	6,584	6,667	6,687	6,645	6,760	6,752
Employment-population ratio.....	57.9	58.5	58.2	57.4	57.3	57.4	56.9	57.8	57.6
Unemployed.....	1,274	1,239	1,269	1,331	1,337	1,395	1,419	1,313	1,349
Unemployment rate.....	16.1	15.3	15.7	16.8	16.7	17.3	17.6	16.3	16.7
<b>Women, 20 years and over</b>									
Civilian labor force.....	8,999	9,158	9,238	9,001	9,005	9,103	9,082	9,168	9,233
Participation rate.....	63.1	63.2	63.6	63.1	62.4	63.0	62.7	63.3	63.6
Employed.....	7,942	7,996	8,035	7,946	7,847	7,902	7,940	8,000	8,025
Employment-population ratio.....	55.7	55.2	55.4	55.7	54.4	54.7	54.9	55.2	55.3
Unemployed.....	1,057	1,162	1,203	1,055	1,157	1,202	1,143	1,168	1,208
Unemployment rate.....	11.7	12.7	13.0	11.7	12.9	13.2	12.6	12.7	13.1
<b>Both sexes, 16 to 19 years</b>									
Civilian labor force.....	696	680	657	743	643	693	608	695	697
Participation rate.....	26.0	25.7	24.9	27.8	24.2	26.2	23.0	26.3	26.5
Employed.....	359	365	356	373	382	379	310	361	373
Employment-population ratio.....	13.4	13.8	13.5	14.0	14.4	14.3	11.7	13.7	14.2
Unemployed.....	337	314	301	370	261	314	298	334	324
Unemployment rate.....	48.4	46.2	45.8	49.8	40.6	45.4	49.0	48.0	46.5
<b>ASIAN</b>									
Civilian noninstitutional population.....	10,879	11,306	11,376	-	-	-	-	-	-

See footnotes at end of table.

**HOUSEHOLD DATA**

**Table A-2. Employment status of the civilian population by race, sex, and age — Continued**

[Numbers in thousands]

Employment status, race, sex, and age	Not seasonally adjusted			Seasonally adjusted <sup>1</sup>					
	Nov. 2009	Oct. 2010	Nov. 2010	Nov. 2009	July 2010	Aug. 2010	Sept. 2010	Oct. 2010	Nov. 2010
Civilian labor force.....	7,080	7,317	7,335	-	-	-	-	-	-
Participation rate.....	65.1	64.7	64.5	-	-	-	-	-	-
Employed.....	6,566	6,798	6,780	-	-	-	-	-	-
Employment-population ratio.....	60.4	60.1	59.6	-	-	-	-	-	-
Unemployed.....	514	519	555	-	-	-	-	-	-
Unemployment rate.....	7.3	7.1	7.6	-	-	-	-	-	-
Not in labor force.....	3,799	3,988	4,041	-	-	-	-	-	-

<sup>1</sup> The population figures are not adjusted for seasonal variation; therefore, identical numbers appear in the unadjusted and seasonally adjusted columns.

- Data not available.

NOTE: Estimates for the above race groups will not sum to totals shown in table A-1 because data are not presented for all races. Updated population controls are introduced annually with the release of January data.

**HOUSEHOLD DATA**

**Table A-3. Employment status of the Hispanic or Latino population by sex and age**

[Numbers in thousands]

Employment status, sex, and age	Not seasonally adjusted			Seasonally adjusted <sup>1</sup>					
	Nov. 2009	Oct. 2010	Nov. 2010	Nov. 2009	July 2010	Aug. 2010	Sept. 2010	Oct. 2010	Nov. 2010
<b>HISPANIC OR LATINO ETHNICITY</b>									
Civilian noninstitutional population.....	33,291	34,014	34,102	33,291	33,747	33,836	33,927	34,014	34,102
Civilian labor force.....	22,622	22,784	22,958	22,564	22,738	22,729	22,910	22,803	22,912
Participation rate.....	68.0	67.0	67.3	67.8	67.4	67.2	67.5	67.0	67.2
Employed.....	19,860	20,051	20,042	19,692	19,987	20,002	20,070	19,939	19,896
Employment-population ratio.....	59.7	58.9	58.8	59.2	59.2	59.1	59.2	58.6	58.3
Unemployed.....	2,762	2,733	2,916	2,872	2,751	2,726	2,840	2,865	3,017
Unemployment rate.....	12.2	12.0	12.7	12.7	12.1	12.0	12.4	12.6	13.2
Not in labor force.....	10,669	11,230	11,145	10,727	11,009	11,107	11,017	11,211	11,190
<b>Men, 20 years and over</b>									
Civilian labor force.....	12,862	12,964	13,000	-	-	-	-	-	-
Participation rate.....	83.0	81.8	81.8	-	-	-	-	-	-
Employed.....	11,374	11,566	11,454	-	-	-	-	-	-
Employment-population ratio.....	73.4	73.0	72.1	-	-	-	-	-	-
Unemployed.....	1,488	1,398	1,546	-	-	-	-	-	-
Unemployment rate.....	11.6	10.8	11.9	-	-	-	-	-	-
<b>Women, 20 years and over</b>									
Civilian labor force.....	8,767	8,867	8,999	-	-	-	-	-	-
Participation rate.....	59.9	59.5	60.2	-	-	-	-	-	-
Employed.....	7,838	7,833	7,916	-	-	-	-	-	-
Employment-population ratio.....	53.5	52.5	52.9	-	-	-	-	-	-
Unemployed.....	929	1,034	1,083	-	-	-	-	-	-
Unemployment rate.....	10.6	11.7	12.0	-	-	-	-	-	-
<b>Both sexes, 16 to 19 years</b>									
Civilian labor force.....	993	953	959	-	-	-	-	-	-
Participation rate.....	31.5	29.3	29.4	-	-	-	-	-	-
Employed.....	649	651	672	-	-	-	-	-	-
Employment-population ratio.....	20.6	20.0	20.6	-	-	-	-	-	-
Unemployed.....	344	301	288	-	-	-	-	-	-
Unemployment rate.....	34.7	31.6	30.0	-	-	-	-	-	-

<sup>1</sup> The population figures are not adjusted for seasonal variation; therefore, identical numbers appear in the unadjusted and seasonally adjusted columns.

- Data not available.

NOTE: Persons whose ethnicity is identified as Hispanic or Latino may be of any race. Updated population controls are introduced annually with the release of January data.

**HOUSEHOLD DATA**

**Table A-4. Employment status of the civilian population 25 years and over by educational attainment**

[Numbers in thousands]

Educational attainment	Not seasonally adjusted			Seasonally adjusted					
	Nov. 2009	Oct. 2010	Nov. 2010	Nov. 2009	July 2010	Aug. 2010	Sept. 2010	Oct. 2010	Nov. 2010
<b>Less than a high school diploma</b>									
Civilian labor force.....	11,929	11,519	11,730	12,003	12,048	11,819	11,821	11,800	11,807
Participation rate.....	46.0	45.9	46.3	46.3	47.3	46.4	46.7	47.0	46.6
Employed.....	10,207	9,908	9,943	10,202	10,390	10,165	10,001	9,993	9,952
Employment-population ratio.....	39.4	39.4	39.3	39.3	40.8	39.9	39.5	39.8	39.3
Unemployed.....	1,722	1,611	1,788	1,802	1,658	1,654	1,820	1,806	1,855
Unemployment rate.....	14.4	14.0	15.2	15.0	13.8	14.0	15.4	15.3	15.7
<b>High school graduates, no college<sup>1</sup></b>									
Civilian labor force.....	38,013	37,638	37,794	37,759	37,941	38,314	38,116	37,968	37,815
Participation rate.....	62.0	60.9	61.0	61.6	61.6	61.9	61.9	61.4	61.1
Employed.....	34,249	34,186	34,178	33,851	34,113	34,373	34,289	34,130	34,021
Employment-population ratio.....	55.9	55.3	55.2	55.2	55.4	55.6	55.6	55.2	54.9
Unemployed.....	3,764	3,452	3,616	3,908	3,829	3,940	3,827	3,838	3,793
Unemployment rate.....	9.9	9.2	9.6	10.4	10.1	10.3	10.0	10.1	10.0
<b>Some college or associate degree</b>									
Civilian labor force.....	37,228	37,445	37,337	36,946	36,713	37,068	37,037	37,228	37,067
Participation rate.....	70.9	70.6	70.4	70.4	70.0	70.5	70.4	70.2	69.9
Employed.....	34,099	34,417	34,247	33,629	33,652	33,850	33,684	34,067	33,839
Employment-population ratio.....	65.0	64.9	64.6	64.1	64.1	64.4	64.0	64.2	63.8
Unemployed.....	3,128	3,028	3,090	3,318	3,061	3,218	3,352	3,161	3,228
Unemployment rate.....	8.4	8.1	8.3	9.0	8.3	8.7	9.1	8.5	8.7
<b>Bachelor's degree and higher<sup>2</sup></b>									
Civilian labor force.....	45,981	46,451	46,330	45,992	46,015	45,676	46,472	46,140	46,328
Participation rate.....	77.4	76.6	76.6	77.4	76.2	75.8	76.4	76.1	76.6
Employed.....	43,888	44,370	44,101	43,743	43,924	43,582	44,420	43,992	43,959
Employment-population ratio.....	73.9	73.2	72.9	73.6	72.7	72.3	73.1	72.6	72.7
Unemployed.....	2,093	2,081	2,228	2,249	2,091	2,094	2,052	2,149	2,370
Unemployment rate.....	4.6	4.5	4.8	4.9	4.5	4.6	4.4	4.7	5.1

1 Includes persons with a high school diploma or equivalent.

2 Includes persons with bachelor's, master's, professional, and doctoral degrees.

NOTE: Updated population controls are introduced annually with the release of January data.



# HOUSEHOLD DATA

**Table A-5. Employment status of the civilian population 18 years and over by veteran status, period of service, and sex, not seasonally adjusted**

[Numbers in thousands]

Employment status, veteran status, and period of service	Total		Men		Women	
	Nov. 2009	Nov. 2010	Nov. 2009	Nov. 2010	Nov. 2009	Nov. 2010
<b>VETERANS, 18 years and over</b>						
Civilian noninstitutional population.....	22,037	21,865	20,272	20,072	1,765	1,793
Civilian labor force.....	11,847	11,572	10,755	10,468	1,092	1,104
Participation rate.....	53.8	52.9	53.1	52.2	61.9	61.6
Employed.....	10,840	10,573	9,825	9,543	1,015	1,030
Employment-population ratio.....	49.2	48.4	48.5	47.5	57.5	57.4
Unemployed.....	1,008	999	930	924	78	75
Unemployment rate.....	8.5	8.6	8.6	8.8	7.1	6.8
Not in labor force.....	10,190	10,293	9,517	9,604	673	689
<b>  Gulf War-era II veterans</b>						
Civilian noninstitutional population.....	2,060	2,266	1,725	1,915	335	352
Civilian labor force.....	1,695	1,893	1,460	1,648	235	245
Participation rate.....	82.3	83.5	84.6	86.1	70.2	69.8
Employed.....	1,533	1,704	1,316	1,476	217	228
Employment-population ratio.....	74.4	75.2	76.3	77.1	64.8	64.8
Unemployed.....	162	189	144	171	18	18
Unemployment rate.....	9.6	10.0	9.9	10.4	7.6	7.2
Not in labor force.....	365	373	265	267	100	106
<b>  Gulf War-era I veterans</b>						
Civilian noninstitutional population.....	2,872	2,844	2,410	2,418	462	426
Civilian labor force.....	2,493	2,488	2,133	2,155	360	332
Participation rate.....	86.8	87.5	88.5	89.1	77.8	78.1
Employed.....	2,322	2,304	1,990	2,003	332	301
Employment-population ratio.....	80.8	81.0	82.6	82.8	71.8	70.8
Unemployed.....	171	183	143	152	28	31
Unemployment rate.....	6.9	7.4	6.7	7.1	7.7	9.3
Not in labor force.....	380	356	278	263	102	93
<b>  World War II, Korean War, and Vietnam-era veterans</b>						
Civilian noninstitutional population.....	11,225	10,872	10,850	10,515	375	357
Civilian labor force.....	4,214	3,865	4,084	3,747	130	118
Participation rate.....	37.5	35.5	37.6	35.6	34.6	33.1
Employed.....	3,859	3,501	3,740	3,391	118	110
Employment-population ratio.....	34.4	32.2	34.5	32.2	31.6	30.8
Unemployed.....	355	364	344	356	11	8
Unemployment rate.....	8.4	9.4	8.4	9.5	8.8	7.0
Not in labor force.....	7,011	7,007	6,766	6,768	245	239
<b>  Veterans of other service periods</b>						
Civilian noninstitutional population.....	5,879	5,883	5,286	5,225	593	659
Civilian labor force.....	3,446	3,326	3,077	2,918	368	408
Participation rate.....	58.6	56.5	58.2	55.8	62.1	62.0
Employed.....	3,126	3,064	2,779	2,673	348	391
Employment-population ratio.....	53.2	52.1	52.6	51.2	58.6	59.3
Unemployed.....	319	262	299	245	20	18
Unemployment rate.....	9.3	7.9	9.7	8.4	5.6	4.3
Not in labor force.....	2,434	2,557	2,209	2,307	225	251
<b>NONVETERANS, 18 years and over</b>						
Civilian noninstitutional population.....	205,716	207,753	89,809	90,989	115,907	116,764
Civilian labor force.....	139,779	140,294	69,952	70,296	69,827	69,998
Participation rate.....	67.9	67.5	77.9	77.3	60.2	59.9
Employed.....	126,943	127,474	62,664	63,370	64,279	64,103
Employment-population ratio.....	61.7	61.4	69.8	69.6	55.5	54.9
Unemployed.....	12,836	12,820	7,288	6,926	5,548	5,894
Unemployment rate.....	9.2	9.1	10.4	9.9	7.9	8.4
Not in labor force.....	65,937	67,459	19,858	20,693	46,079	46,766

NOTE: Veterans served on active duty in the U.S. Armed Forces and were not on active duty at the time of the survey. Nonveterans never served on active duty in the U.S. Armed Forces. Veterans could have served anywhere in the world during these periods of service: Gulf War era II (September 2001-present), Gulf War era I (August 1990-August 2001), Vietnam era (August 1964-April 1975), Korean War (July 1950-January 1955), World War II (December 1941-December 1946), and other service periods (all other time periods). Veterans who served in more than one wartime period are classified only in the most recent one. Veterans who served during one of the selected wartime periods and another period are classified only in the wartime period. Updated population controls are introduced annually with the release of January data.

**HOUSEHOLD DATA**

**Table A-6. Employment status of the civilian population by sex, age, and disability status, not seasonally adjusted**

[Numbers in thousands]

Employment status, sex, and age	Persons with a disability		Persons with no disability	
	Nov. 2009	Nov. 2010	Nov. 2009	Nov. 2010
<b>TOTAL, 16 years and over</b>				
Civilian noninstitutional population.....	27,031	26,886	209,712	211,829
Civilian labor force.....	5,802	5,784	147,737	147,914
Participation rate.....	21.5	21.5	70.4	69.8
Employed.....	4,983	4,945	134,148	134,470
Employment-population ratio.....	18.4	18.4	64.0	63.5
Unemployed.....	819	839	13,588	13,443
Unemployment rate.....	14.1	14.5	9.2	9.1
Not in labor force.....	21,229	21,102	61,975	63,916
<b>Men, 16 to 64 years</b>				
Civilian labor force.....	2,640	2,641	75,221	75,268
Participation rate.....	36.6	35.9	82.8	82.4
Employed.....	2,231	2,226	67,341	67,834
Employment-population ratio.....	31.0	30.2	74.1	74.2
Unemployed.....	410	415	7,881	7,434
Unemployment rate.....	15.5	15.7	10.5	9.9
Not in labor force.....	4,564	4,718	15,627	16,104
<b>Women, 16 to 64 years</b>				
Civilian labor force.....	2,342	2,338	66,614	66,617
Participation rate.....	30.6	31.2	71.8	71.2
Employed.....	2,001	1,976	61,238	61,013
Employment-population ratio.....	26.1	26.4	66.0	65.2
Unemployed.....	342	362	5,377	5,604
Unemployment rate.....	14.6	15.5	8.1	8.4
Not in labor force.....	5,320	5,157	26,117	26,899
<b>Both sexes, 65 years and over</b>				
Civilian labor force.....	820	805	5,901	6,029
Participation rate.....	6.7	6.7	22.6	22.4
Employed.....	752	743	5,570	5,623
Employment-population ratio.....	6.2	6.2	21.3	20.9
Unemployed.....	68	62	331	406
Unemployment rate.....	8.3	7.7	5.6	6.7
Not in labor force.....	11,345	11,227	20,231	20,912

NOTE: A person with a disability has at least one of the following conditions: is deaf or has serious difficulty hearing; is blind or has serious difficulty seeing even when wearing glasses; has serious difficulty concentrating, remembering, or making decisions because of a physical, mental, or emotional condition; has serious difficulty walking or climbing stairs; has difficulty dressing or bathing; or has difficulty doing errands alone such as visiting a doctor's office or shopping because of a physical, mental, or emotional condition. Updated population controls are introduced annually with the release of January data.

**HOUSEHOLD DATA**

**Table A-7. Employment status of the civilian population by nativity and sex, not seasonally adjusted**

[Numbers in thousands]

Employment status and nativity	Total		Men		Women	
	Nov. 2009	Nov. 2010	Nov. 2009	Nov. 2010	Nov. 2009	Nov. 2010
<b>Foreign born, 16 years and over</b>						
Civilian noninstitutional population.....	35,956	36,350	18,005	18,035	17,951	18,315
Civilian labor force.....	24,350	24,788	14,351	14,403	9,999	10,385
Participation rate.....	67.7	68.2	79.7	79.9	55.7	56.7
Employed.....	22,091	22,387	12,964	13,012	9,127	9,375
Employment-population ratio.....	61.4	61.6	72.0	72.1	50.8	51.2
Unemployed.....	2,259	2,401	1,387	1,391	872	1,010
Unemployment rate.....	9.3	9.7	9.7	9.7	8.7	9.7
Not in labor force.....	11,606	11,562	3,654	3,632	7,952	7,930
<b>Native born, 16 years and over</b>						
Civilian noninstitutional population.....	200,787	202,365	96,627	97,605	104,160	104,760
Civilian labor force.....	129,189	128,909	67,261	67,249	61,927	61,661
Participation rate.....	64.3	63.7	69.6	68.9	59.5	58.9
Employed.....	117,041	117,029	60,144	60,528	56,897	56,500
Employment-population ratio.....	58.3	57.8	62.2	62.0	54.6	53.9
Unemployed.....	12,148	11,881	7,118	6,720	5,030	5,161
Unemployment rate.....	9.4	9.2	10.6	10.0	8.1	8.4
Not in labor force.....	71,598	73,455	29,365	30,356	42,233	43,099

NOTE: The foreign born are those residing in the United States who were not U.S. citizens at birth. That is, they were born outside the United States or one of its outlying areas such as Puerto Rico or Guam, to parents neither of whom was a U.S. citizen. The native born are persons who were born in the United States or one of its outlying areas such as Puerto Rico or Guam or who were born abroad of at least one parent who was a U.S. citizen. Updated population controls are introduced annually with the release of January data.

**HOUSEHOLD DATA**

**Table A-8. Employed persons by class of worker and part-time status**

[In thousands]

Category	Not seasonally adjusted			Seasonally adjusted					
	Nov. 2009	Oct. 2010	Nov. 2010	Nov. 2009	July 2010	Aug. 2010	Sept. 2010	Oct. 2010	Nov. 2010
<b>CLASS OF WORKER</b>									
Agriculture and related industries.....	2,039	2,360	2,127	2,086	2,192	2,188	2,154	2,359	2,191
Wage and salary workers.....	1,281	1,475	1,347	1,331	1,329	1,300	1,291	1,447	1,385
Self-employed workers.....	740	840	749	752	825	855	799	833	772
Unpaid family workers.....	18	45	30	-	-	-	-	-	-
Nonagricultural industries.....	137,093	137,389	137,289	136,357	136,599	136,974	137,243	136,782	136,668
Wage and salary workers.....	128,049	128,487	128,468	127,160	127,881	128,314	128,429	127,814	127,656
Government.....	21,466	20,900	20,745	21,233	20,978	20,575	20,928	20,763	20,590
Private industries.....	106,583	107,587	107,723	105,856	106,869	107,760	107,481	107,053	107,064
Private households.....	776	562	650	-	-	-	-	-	-
Other industries.....	105,807	107,025	107,073	105,097	106,270	107,118	106,900	106,433	106,449
Self-employed workers.....	8,973	8,817	8,727	9,111	8,779	8,678	8,743	8,896	8,849
Unpaid family workers.....	72	85	93	-	-	-	-	-	-
<b>PERSONS AT WORK PART TIME<sup>1</sup></b>									
<b>All industries</b>									
Part time for economic reasons <sup>2</sup> .....	8,894	8,408	8,670	9,225	8,529	8,860	9,472	9,154	8,972
Slack work or business conditions.....	6,524	5,695	5,897	6,684	6,119	6,380	6,733	6,232	6,038
Could only find part-time work.....	2,132	2,442	2,487	2,238	2,246	2,347	2,456	2,572	2,569
Part time for noneconomic reasons <sup>3</sup> .....	19,208	18,717	19,290	18,354	18,157	18,558	18,234	18,211	18,365
<b>Nonagricultural industries</b>									
Part time for economic reasons <sup>2</sup> .....	8,796	8,279	8,526	9,137	8,386	8,730	9,336	9,047	8,830
Slack work or business conditions.....	6,446	5,619	5,805	6,616	6,018	6,304	6,640	6,161	5,948
Could only find part-time work.....	2,124	2,421	2,468	2,241	2,192	2,320	2,431	2,523	2,564
Part time for noneconomic reasons <sup>3</sup> .....	18,871	18,302	18,928	18,066	17,774	18,161	17,891	17,784	17,969

1 Refers to those who worked 1 to 34 hours during the survey reference week and excludes employed persons who were absent from their jobs for the entire week.

2 Refers to those who worked 1 to 34 hours during the reference week for an economic reason such as slack work or unfavorable business conditions, inability to find full-time work, or seasonal declines in demand.

3 Refers to persons who usually work part time for noneconomic reasons such as childcare problems, family or personal obligations, school or training, retirement or Social Security limits on earnings, and other reasons. This excludes persons who usually work full time but worked only 1 to 34 hours during the reference week for reasons such as vacations, holidays, illness, and bad weather.

- Data not available.

NOTE: Detail for the seasonally adjusted data shown in this table will not necessarily add to totals because of the independent seasonal adjustment of the various series. Updated population controls are introduced annually with the release of January data.

# HOUSEHOLD DATA

## Table A-9. Selected employment indicators

[Numbers in thousands]

Characteristic	Not seasonally adjusted			Seasonally adjusted					
	Nov. 2009	Oct. 2010	Nov. 2010	Nov. 2009	July 2010	Aug. 2010	Sept. 2010	Oct. 2010	Nov. 2010
<b>AGE AND SEX</b>									
Total, 16 years and over.....	139,132	139,749	139,415	138,381	138,960	139,250	139,391	139,061	138,888
16 to 19 years.....	4,233	4,144	4,165	4,450	4,315	4,373	4,261	4,312	4,389
16 to 17 years.....	1,349	1,409	1,369	1,409	1,345	1,402	1,398	1,422	1,440
18 to 19 years.....	2,884	2,735	2,796	3,036	2,984	2,975	2,867	2,897	2,966
20 years and over.....	134,899	135,605	135,250	133,931	134,646	134,877	135,131	134,749	134,499
20 to 24 years.....	12,456	12,723	12,781	12,446	12,670	12,838	12,841	12,781	12,785
25 years and over.....	122,443	122,881	122,469	121,539	122,109	122,074	122,267	121,894	121,673
25 to 54 years.....	95,033	94,791	94,347	94,318	94,062	94,005	94,067	94,017	93,672
25 to 34 years.....	30,072	30,589	30,458	29,793	30,278	30,318	30,315	30,325	30,210
35 to 44 years.....	31,209	30,886	30,715	31,031	30,604	30,584	30,514	30,648	30,532
45 to 54 years.....	33,753	33,315	33,175	33,494	33,180	33,104	33,238	33,044	32,930
55 years and over.....	27,410	28,091	28,122	27,221	28,047	28,069	28,200	27,878	28,001
Men, 16 years and over.....	73,107	73,970	73,540	72,794	73,454	73,608	73,581	73,454	73,329
16 to 19 years.....	1,996	2,010	2,069	2,131	2,122	2,087	2,036	2,091	2,201
16 to 17 years.....	619	623	627	673	667	667	660	650	685
18 to 19 years.....	1,377	1,387	1,443	1,453	1,472	1,428	1,372	1,441	1,528
20 years and over.....	71,112	71,960	71,471	70,662	71,332	71,521	71,545	71,363	71,129
20 to 24 years.....	6,291	6,481	6,473	6,301	6,434	6,571	6,536	6,540	6,497
25 years and over.....	64,821	65,479	64,998	64,375	64,937	64,952	65,015	64,838	64,591
25 to 54 years.....	50,450	50,805	50,304	50,090	50,340	50,321	50,303	50,255	49,957
25 to 34 years.....	16,316	16,668	16,491	16,157	16,403	16,478	16,433	16,438	16,331
35 to 44 years.....	16,819	16,737	16,652	16,719	16,644	16,601	16,534	16,574	16,541
45 to 54 years.....	17,314	17,400	17,162	17,214	17,293	17,242	17,336	17,243	17,085
55 years and over.....	14,371	14,675	14,693	14,285	14,597	14,631	14,712	14,583	14,634
Women, 16 years and over.....	66,024	65,779	65,875	65,587	65,506	65,642	65,811	65,607	65,559
16 to 19 years.....	2,238	2,134	2,096	2,318	2,192	2,286	2,225	2,221	2,189
16 to 17 years.....	730	786	742	736	678	735	738	772	755
18 to 19 years.....	1,507	1,348	1,354	1,583	1,512	1,547	1,494	1,456	1,437
20 years and over.....	63,787	63,645	63,779	63,269	63,314	63,356	63,586	63,386	63,370
20 to 24 years.....	6,165	6,242	6,308	6,145	6,236	6,267	6,305	6,241	6,288
25 years and over.....	57,622	57,402	57,471	57,164	57,172	57,122	57,252	57,056	57,083
25 to 54 years.....	44,583	43,986	44,042	44,229	43,722	43,684	43,765	43,762	43,716
25 to 34 years.....	13,755	13,921	13,967	13,637	13,875	13,840	13,883	13,887	13,878
35 to 44 years.....	14,389	14,150	14,063	14,312	13,960	13,983	13,980	14,074	13,992
45 to 54 years.....	16,439	15,915	16,013	16,280	15,887	15,862	15,902	15,801	15,845
55 years and over.....	13,038	13,416	13,429	12,936	13,450	13,438	13,488	13,294	13,367
<b>MARITAL STATUS</b>									
Married men, spouse present.....	43,484	43,492	43,296	43,336	43,369	43,433	43,723	43,349	43,127
Married women, spouse present.....	35,082	34,642	34,725	34,867	34,304	34,213	34,449	34,555	34,530
Women who maintain families.....	8,798	8,959	8,817	-	-	-	-	-	-
<b>FULL- OR PART-TIME STATUS</b>									
Full-time workers <sup>1</sup> .....	111,274	112,342	111,348	110,901	112,076	111,822	111,716	111,592	111,114
Part-time workers <sup>2</sup> .....	27,858	27,407	28,068	27,400	27,082	27,705	27,636	27,446	27,628
<b>MULTIPLE JOBHOLDERS</b>									
Total multiple jobholders.....	7,222	6,817	6,816	7,060	6,546	6,814	6,684	6,665	6,710
Percent of total employed.....	5.2	4.9	4.9	5.1	4.7	4.9	4.8	4.8	4.8

1 Employed full-time workers are persons who usually work 35 hours or more per week.

2 Employed part-time workers are persons who usually work less than 35 hours per week.

- Data not available.

NOTE: Detail for the seasonally adjusted data shown in this table will not necessarily add to totals because of the independent seasonal adjustment of the various series. Updated population controls are introduced annually with the release of January data.

# HOUSEHOLD DATA

## Table A-10. Selected unemployment indicators, seasonally adjusted

Characteristic	Number of unemployed persons (in thousands)			Unemployment rates					
	Nov. 2009	Oct. 2010	Nov. 2010	Nov. 2009	July 2010	Aug. 2010	Sept. 2010	Oct. 2010	Nov. 2010
<b>AGE AND SEX</b>									
Total, 16 years and over.....	15,340	14,843	15,119	10.0	9.5	9.6	9.6	9.6	9.8
16 to 19 years.....	1,627	1,600	1,432	26.8	26.1	26.3	26.0	27.1	24.6
16 to 17 years.....	569	631	474	28.8	30.4	31.4	30.3	30.7	24.8
18 to 19 years.....	1,071	950	948	26.1	23.6	23.9	23.1	24.7	24.2
20 years and over.....	13,712	13,243	13,687	9.3	8.8	9.0	8.9	8.9	9.2
20 to 24 years.....	2,361	2,297	2,421	15.9	15.6	14.9	14.8	15.2	15.9
25 years and over.....	11,264	10,937	11,213	8.5	8.1	8.3	8.3	8.2	8.4
25 to 54 years.....	9,171	8,739	8,995	8.9	8.5	8.5	8.7	8.5	8.8
25 to 34 years.....	3,436	3,325	3,525	10.3	9.9	9.8	10.0	9.9	10.4
35 to 44 years.....	2,909	2,623	2,559	8.6	8.0	7.7	8.4	7.9	7.7
45 to 54 years.....	2,827	2,791	2,911	7.8	7.5	8.1	7.7	7.8	8.1
55 years and over.....	2,085	2,179	2,197	7.1	6.9	7.3	7.2	7.3	7.3
Men, 16 years and over.....	9,171	8,514	8,701	11.2	10.4	10.6	10.5	10.4	10.6
16 to 19 years.....	932	888	801	30.4	29.0	29.7	29.3	29.8	26.7
16 to 17 years.....	296	340	273	30.5	32.5	33.0	33.5	34.3	28.5
18 to 19 years.....	638	530	522	30.5	26.7	28.1	26.2	26.9	25.5
20 years and over.....	8,239	7,626	7,900	10.4	9.7	9.8	9.8	9.7	10.0
20 to 24 years.....	1,415	1,299	1,441	18.3	18.3	17.3	17.1	16.6	18.2
25 years and over.....	6,763	6,332	6,430	9.5	8.8	9.1	9.1	8.9	9.1
25 to 54 years.....	5,562	5,005	5,148	10.0	9.1	9.2	9.4	9.1	9.3
25 to 34 years.....	2,046	1,912	2,011	11.2	10.7	10.4	10.9	10.4	11.0
35 to 44 years.....	1,707	1,485	1,418	9.3	8.3	8.3	8.6	8.2	7.9
45 to 54 years.....	1,809	1,608	1,720	9.5	8.4	9.0	8.6	8.5	9.1
55 years and over.....	1,201	1,327	1,282	7.8	7.7	8.4	7.9	8.3	8.1
Women, 16 years and over.....	6,169	6,329	6,418	8.6	8.5	8.6	8.6	8.8	8.9
16 to 19 years.....	695	712	631	23.1	23.1	22.9	22.8	24.3	22.4
16 to 17 years.....	274	291	202	27.1	28.2	30.0	27.1	27.4	21.1
18 to 19 years.....	433	421	426	21.5	20.5	19.5	20.1	22.4	22.9
20 years and over.....	5,473	5,617	5,788	8.0	7.9	8.0	8.0	8.1	8.4
20 to 24 years.....	946	998	980	13.3	12.7	12.2	12.3	13.8	13.5
25 years and over.....	4,501	4,605	4,783	7.3	7.3	7.4	7.4	7.5	7.7
25 to 54 years.....	3,610	3,734	3,846	7.5	7.7	7.7	7.8	7.9	8.1
25 to 34 years.....	1,390	1,413	1,514	9.3	9.0	9.0	9.0	9.2	9.8
35 to 44 years.....	1,202	1,138	1,141	7.7	7.6	7.1	8.1	7.5	7.5
45 to 54 years.....	1,018	1,182	1,192	5.9	6.5	7.1	6.7	7.0	7.0
55 years and over <sup>1</sup> .....	859	846	887	6.2	6.9	6.9	6.4	5.9	6.2
<b>MARITAL STATUS</b>									
Married men, spouse present.....	3,517	3,282	3,264	7.5	6.6	6.8	6.8	7.0	7.0
Married women, spouse present.....	2,105	2,085	2,127	5.7	5.8	6.0	5.7	5.7	5.8
Women who maintain families <sup>1</sup> .....	1,131	1,267	1,317	11.4	13.4	13.4	12.9	12.4	13.0
<b>FULL- OR PART-TIME STATUS</b>									
Full-time workers <sup>2</sup> .....	13,699	13,012	13,368	11.0	10.2	10.3	10.4	10.4	10.7
Part-time workers <sup>3</sup> .....	1,626	1,854	1,692	5.6	6.4	6.7	6.1	6.3	5.8

1 Not seasonally adjusted.

2 Full-time workers are unemployed persons who have expressed a desire to work full time (35 hours or more per week) or are on layoff from full-time jobs.

3 Part-time workers are unemployed persons who have expressed a desire to work part time (less than 35 hours per week) or are on layoff from part-time jobs.

NOTE: Detail for the seasonally adjusted data shown in this table will not necessarily add to totals because of the independent seasonal adjustment of the various series. Updated population controls are introduced annually with the release of January data.

## HOUSEHOLD DATA

### Table A-11. Unemployed persons by reason for unemployment

[Numbers in thousands]

Reason	Not seasonally adjusted			Seasonally adjusted					
	Nov. 2009	Oct. 2010	Nov. 2010	Nov. 2009	July 2010	Aug. 2010	Sept. 2010	Oct. 2010	Nov. 2010
<b>NUMBER OF UNEMPLOYED</b>									
Job losers and persons who completed temporary jobs.....	9,130	8,331	8,926	9,965	9,125	9,305	9,401	9,108	9,498
On temporary layoff.....	1,245	890	1,172	1,548	1,268	1,480	1,349	1,278	1,425
Not on temporary layoff.....	7,884	7,441	7,754	8,418	7,857	7,825	8,051	7,829	8,073
Permanent job losers.....	6,515	6,009	6,183	6,920	6,518	6,480	6,589	6,319	6,457
Persons who completed temporary jobs.....	1,369	1,432	1,571	1,439	1,339	1,345	1,463	1,510	1,616
Job leavers.....	921	876	852	929	900	874	807	854	862
Reentrants.....	3,158	3,466	3,348	3,221	3,393	3,411	3,436	3,512	3,451
New entrants.....	1,198	1,230	1,156	1,270	1,188	1,259	1,187	1,273	1,238
<b>PERCENT DISTRIBUTION</b>									
Job losers and persons who completed temporary jobs.....	63.4	59.9	62.5	64.8	62.5	62.7	63.4	61.8	63.1
On temporary layoff.....	8.6	6.4	8.2	10.1	8.7	10.0	9.1	8.7	9.5
Not on temporary layoff.....	54.7	53.5	54.3	54.7	53.8	52.7	54.3	53.1	53.6
Job leavers.....	6.4	6.3	6.0	6.0	6.2	5.9	5.4	5.8	5.7
Reentrants.....	21.9	24.9	23.4	20.9	23.2	23.0	23.2	23.8	22.9
New entrants.....	8.3	8.8	8.1	8.3	8.1	8.5	8.0	8.6	8.2
<b>UNEMPLOYED AS A PERCENT OF THE CIVILIAN LABOR FORCE</b>									
Job losers and persons who completed temporary jobs.....	5.9	5.4	5.8	6.5	5.9	6.0	6.1	5.9	6.2
Job leavers.....	0.6	0.6	0.6	0.6	0.6	0.6	0.5	0.6	0.6
Reentrants.....	2.1	2.3	2.2	2.1	2.2	2.2	2.2	2.3	2.2
New entrants.....	0.8	0.8	0.8	0.8	0.8	0.8	0.8	0.8	0.8

NOTE: Updated population controls are introduced annually with the release of January data.

## HOUSEHOLD DATA

### Table A-12. Unemployed persons by duration of unemployment

[Numbers in thousands]

Duration	Not seasonally adjusted			Seasonally adjusted					
	Nov. 2009	Oct. 2010	Nov. 2010	Nov. 2009	July 2010	Aug. 2010	Sept. 2010	Oct. 2010	Nov. 2010
<b>NUMBER OF UNEMPLOYED</b>									
Less than 5 weeks.....	2,583	2,432	2,639	2,774	2,839	2,760	2,891	2,657	2,828
5 to 14 weeks.....	3,296	3,037	3,152	3,517	3,060	3,635	3,350	3,458	3,359
15 weeks and over.....	8,528	8,434	8,491	8,976	8,722	8,484	8,458	8,725	8,889
15 to 26 weeks.....	2,678	2,335	2,233	3,075	2,151	2,235	2,336	2,519	2,576
27 weeks and over.....	5,849	6,099	6,258	5,901	6,572	6,249	6,123	6,206	6,313
Average (mean) duration, in weeks.....	29.4	34.9	34.5	28.6	34.2	33.6	33.3	33.9	33.8
Median duration, in weeks.....	20.2	21.9	21.7	20.2	22.2	19.9	20.4	21.2	21.6
<b>PERCENT DISTRIBUTION</b>									
Less than 5 weeks.....	17.9	17.5	18.5	18.2	19.4	18.5	19.7	17.9	18.8
5 to 14 weeks.....	22.9	21.8	22.1	23.0	20.9	24.4	22.8	23.3	22.3
15 weeks and over.....	59.2	60.7	59.5	58.8	59.7	57.0	57.5	58.8	59.0
15 to 26 weeks.....	18.6	16.8	15.6	20.1	14.7	15.0	15.9	17.0	17.1
27 weeks and over.....	40.6	43.9	43.8	38.7	44.9	42.0	41.7	41.8	41.9

NOTE: Updated population controls are introduced annually with the release of January data.



**HOUSEHOLD DATA**

**Table A-13. Employed and unemployed persons by occupation, not seasonally adjusted**

[Numbers in thousands]

Occupation	Employed		Unemployed		Unemployment rates	
	Nov. 2009	Nov. 2010	Nov. 2009	Nov. 2010	Nov. 2009	Nov. 2010
Total, 16 years and over <sup>1</sup> .....	139,132	139,415	14,407	14,282	9.4	9.3
Management, professional, and related occupations.....	52,263	51,532	2,530	2,525	4.6	4.7
Management, business, and financial operations occupations.....	20,721	20,420	1,194	1,191	5.4	5.5
Professional and related occupations.....	31,543	31,111	1,336	1,334	4.1	4.1
Service occupations.....	24,364	24,641	2,604	2,810	9.7	10.2
Sales and office occupations.....	33,281	33,525	3,202	3,232	8.8	8.8
Sales and related occupations.....	15,428	15,732	1,538	1,515	9.1	8.8
Office and administrative support occupations.....	17,853	17,793	1,664	1,717	8.5	8.8
Natural resources, construction, and maintenance occupations.....	13,194	12,768	2,472	2,274	15.8	15.1
Farming, fishing, and forestry occupations.....	934	956	128	194	12.1	16.9
Construction and extraction occupations.....	7,509	6,896	1,897	1,619	20.2	19.0
Installation, maintenance, and repair occupations.....	4,751	4,916	447	461	8.6	8.6
Production, transportation, and material moving occupations.....	16,030	16,949	2,359	2,263	12.8	11.8
Production occupations.....	7,644	8,390	1,248	1,169	14.0	12.2
Transportation and material moving occupations.....	8,385	8,560	1,111	1,094	11.7	11.3

<sup>1</sup> Persons with no previous work experience and persons whose last job was in the U.S. Armed Forces are included in the unemployed total.

NOTE: Updated population controls are introduced annually with the release of January data.

**HOUSEHOLD DATA**

**Table A-14. Unemployed persons by industry and class of worker, not seasonally adjusted**

Industry and class of worker	Number of unemployed persons (in thousands)		Unemployment rates	
	Nov. 2009	Nov. 2010	Nov. 2009	Nov. 2010
Total, 16 years and over <sup>1</sup> .....	14,407	14,282	9.4	9.3
Nonagricultural private wage and salary workers.....	11,688	11,363	9.9	9.5
Mining, quarrying, and oil and gas extraction.....	96	68	12.0	8.5
Construction.....	1,780	1,596	19.4	18.8
Manufacturing.....	1,882	1,526	12.5	9.9
Durable goods.....	1,219	991	12.7	10.4
Nondurable goods.....	663	535	12.0	9.1
Wholesale and retail trade.....	1,879	1,883	9.2	9.0
Transportation and utilities.....	493	434	8.5	7.6
Information.....	243	268	7.6	8.8
Financial activities.....	619	590	6.7	6.7
Professional and business services.....	1,514	1,521	10.6	10.6
Education and health services.....	1,168	1,298	5.5	5.9
Leisure and hospitality.....	1,524	1,634	11.9	12.4
Other services.....	491	545	8.0	8.6
Agriculture and related private wage and salary workers.....	180	223	12.6	14.5
Government workers.....	748	949	3.4	4.4
Self-employed and unpaid family workers.....	592	591	5.7	5.8

<sup>1</sup> Persons with no previous work experience and persons whose last job was in the U.S. Armed Forces are included in the unemployed total.

NOTE: Updated population controls are introduced annually with the release of January data.

**HOUSEHOLD DATA**

**Table A-15. Alternative measures of labor underutilization**

[Percent]

Measure	Not seasonally adjusted			Seasonally adjusted					
	Nov. 2009	Oct. 2010	Nov. 2010	Nov. 2009	July 2010	Aug. 2010	Sept. 2010	Oct. 2010	Nov. 2010
U-1 Persons unemployed 15 weeks or longer, as a percent of the civilian labor force.....	5.6	5.5	5.5	5.8	5.7	5.5	5.5	5.7	5.8
U-2 Job losers and persons who completed temporary jobs, as a percent of the civilian labor force.....	5.9	5.4	5.8	6.5	5.9	6.0	6.1	5.9	6.2
U-3 Total unemployed, as a percent of the civilian labor force (official unemployment rate).....	9.4	9.0	9.3	10.0	9.5	9.6	9.6	9.6	9.8
U-4 Total unemployed plus discouraged workers, as a percent of the civilian labor force plus discouraged workers.....	9.9	9.8	10.0	10.5	10.2	10.3	10.3	10.4	10.6
U-5 Total unemployed, plus discouraged workers, plus all other persons marginally attached to the labor force, as a percent of the civilian labor force plus all persons marginally attached to the labor force.....	10.7	10.6	10.8	11.3	11.0	11.0	11.0	11.1	11.3
U-6 Total unemployed, plus all persons marginally attached to the labor force, plus total employed part time for economic reasons, as a percent of the civilian labor force plus all persons marginally attached to the labor force.....	16.4	15.9	16.3	17.2	16.5	16.7	17.1	17.0	17.0

NOTE: Persons marginally attached to the labor force are those who currently are neither working nor looking for work but indicate that they want and are available for a job and have looked for work sometime in the past 12 months. Discouraged workers, a subset of the marginally attached, have given a job-market related reason for not currently looking for work. Persons employed part time for economic reasons are those who want and are available for full-time work but have had to settle for a part-time schedule. Updated population controls are introduced annually with the release of January data.

**HOUSEHOLD DATA**

**Table A-16. Persons not in the labor force and multiple jobholders by sex, not seasonally adjusted**

[Numbers in thousands]

Category	Total		Men		Women	
	Nov. 2009	Nov. 2010	Nov. 2009	Nov. 2010	Nov. 2009	Nov. 2010
<b>NOT IN THE LABOR FORCE</b>						
Total not in the labor force.....	83,204	85,017	33,019	33,988	50,184	51,029
Persons who currently want a job.....	5,618	5,832	2,671	2,823	2,947	3,010
Marginally attached to the labor force <sup>1</sup> .....	2,323	2,531	1,242	1,399	1,081	1,131
Discouraged workers <sup>2</sup> .....	861	1,282	504	830	357	452
Other persons marginally attached to the labor force <sup>3</sup> .....	1,462	1,249	738	570	725	679
<b>MULTIPLE JOBHOLDERS</b>						
Total multiple jobholders <sup>4</sup> .....	7,222	6,816	3,461	3,202	3,761	3,614
Percent of total employed.....	5.2	4.9	4.7	4.4	5.7	5.5
Primary job full time, secondary job part time.....	3,864	3,573	2,062	1,855	1,802	1,718
Primary and secondary jobs both part time.....	1,899	1,891	617	629	1,282	1,262
Primary and secondary jobs both full time.....	228	206	142	135	86	71
Hours vary on primary or secondary job.....	1,170	1,113	603	564	567	549

1 Data refer to persons who want a job, have searched for work during the prior 12 months, and were available to take a job during the reference week, but had not looked for work in the past 4 weeks.

2 Includes those who did not actively look for work in the prior 4 weeks for reasons such as thinks no work available, could not find work, lacks schooling or training, employer thinks too young or old, and other types of discrimination.

3 Includes those who did not actively look for work in the prior 4 weeks for such reasons as school or family responsibilities, ill health, and transportation problems, as well as a number for whom reason for nonparticipation was not determined.

4 Includes a small number of persons who work part time on their primary job and full time on their secondary job(s), not shown separately.

NOTE: Updated population controls are introduced annually with the release of January data.

**ESTABLISHMENT DATA**

**Table B-1. Employees on nonfarm payrolls by industry sector and selected industry detail**

[In thousands]

Industry	Not seasonally adjusted				Seasonally adjusted				Change from: Oct. 2010- Nov. 2010 <sup>P</sup>
	Nov. 2009	Sept. 2010	Oct. 2010 <sup>P</sup>	Nov. 2010 <sup>P</sup>	Nov. 2009	Sept. 2010	Oct. 2010 <sup>P</sup>	Nov. 2010 <sup>P</sup>	
Total nonfarm.....	130,969	130,628	131,594	131,811	129,697	130,328	130,500	130,539	39
Total private.....	107,974	108,554	108,959	109,060	107,190	108,068	108,228	108,278	50
Goods-producing.....	18,177	18,364	18,353	18,239	17,960	18,038	18,041	18,026	-15
Mining and logging.....	682	758	770	771	676	749	760	763	3
Logging.....	48.9	49.2	49.1	48.2	47.2	47.2	46.9	46.8	-0.1
Mining.....	633.2	708.8	720.5	722.6	628.4	701.8	712.7	716.6	3.9
Oil and gas extraction.....	160.6	167.4	169.4	168.0	160.2	167.8	169.8	167.8	-2.0
Mining, except oil and gas <sup>1</sup> .....	209.7	222.7	223.1	222.4	207.2	217.3	218.8	219.2	0.4
Coal mining.....	79.4	84.4	84.9	84.6	79.3	84.1	84.8	84.2	-0.6
Support activities for mining.....	262.9	318.7	328.0	332.2	261.0	316.7	324.1	329.6	5.5
Construction.....	5,868	5,846	5,847	5,752	5,732	5,617	5,620	5,615	-5
Construction of buildings.....	1,320.6	1,298.4	1,292.7	1,280.1	1,295.9	1,262.3	1,256.8	1,257.0	0.2
Residential building.....	615.4	594.6	589.5	584.2	602.6	574.9	570.8	571.3	0.5
Nonresidential building.....	705.2	703.8	703.2	695.9	693.3	687.4	686.0	685.7	-0.3
Heavy and civil engineering construction.....	838.3	889.8	892.8	862.9	808.7	827.2	831.2	832.5	1.3
Specialty trade contractors.....	3,709.0	3,657.5	3,661.1	3,608.7	3,627.6	3,527.9	3,532.3	3,525.5	-6.8
Residential specialty trade contractors.....	1,600.7	1,587.3	1,577.2	1,552.4	1,566.6	1,522.0	1,518.6	1,518.9	0.3
Nonresidential specialty trade contractors.....	2,108.3	2,070.2	2,083.9	2,056.3	2,061.0	2,005.9	2,013.7	2,006.6	-7.1
Manufacturing.....	11,627	11,760	11,736	11,716	11,552	11,672	11,661	11,648	-13
Durable goods.....	7,099	7,225	7,222	7,224	7,047	7,185	7,181	7,176	-5
Wood products.....	351.1	350.6	345.7	346.4	348.6	344.8	343.7	344.3	0.6
Nonmetallic mineral products.....	388.8	394.1	391.5	385.9	382.6	383.8	383.2	380.5	-2.7
Primary metals.....	353.3	376.4	376.1	375.6	350.8	374.8	374.4	374.2	-0.2
Fabricated metal products.....	1,279.0	1,332.0	1,334.4	1,333.1	1,268.0	1,321.0	1,320.7	1,321.7	1.0
Machinery.....	984.0	1,001.0	1,008.4	1,009.7	975.9	1,000.8	1,001.9	1,003.6	1.7
Computer and electronic products <sup>1</sup> .....	1,101.2	1,101.9	1,101.9	1,106.5	1,097.9	1,103.4	1,102.2	1,102.9	0.7
Computer and peripheral equipment.....	160.1	161.5	162.3	163.2	159.5	161.3	162.0	161.9	-0.1
Communication equipment.....	118.5	122.1	123.3	123.3	118.3	122.6	123.3	123.2	-0.1
Semiconductors and electronic components.....	362.3	368.7	368.4	368.7	360.8	368.6	368.1	367.6	-0.5
Electronic instruments.....	411.7	405.2	403.1	405.8	411.4	406.0	403.8	405.2	1.4
Electrical equipment and appliances.....	364.8	375.0	375.3	374.2	363.4	373.7	374.3	373.0	-1.3
Transportation equipment <sup>1</sup> .....	1,328.9	1,357.9	1,351.8	1,356.3	1,318.0	1,349.1	1,348.6	1,346.9	-1.7
Motor vehicles and parts <sup>2</sup> .....	663.0	690.7	687.1	690.9	653.3	683.0	684.2	682.7	-1.5
Furniture and related products.....	366.9	359.4	356.9	354.0	365.8	357.3	355.9	353.5	-2.4
Miscellaneous manufacturing.....	581.2	576.2	579.6	581.9	576.1	576.2	575.9	575.5	-0.4
Nondurable goods.....	4,528	4,535	4,514	4,492	4,505	4,487	4,480	4,472	-8
Food manufacturing.....	1,471.4	1,488.3	1,471.1	1,459.2	1,457.4	1,454.2	1,448.5	1,447.7	-0.8
Beverages and tobacco products.....	185.4	188.0	189.1	183.0	185.3	182.9	184.7	183.0	-1.7
Textile mills.....	123.8	123.1	123.8	124.2	122.5	122.8	123.2	123.1	-0.1
Textile product mills.....	124.7	122.0	121.5	119.9	122.8	121.5	120.0	118.6	-1.4
Apparel.....	162.7	165.6	164.0	162.5	164.0	163.2	164.0	163.2	-0.8
Leather and allied products.....	28.1	29.5	30.1	29.8	28.4	29.2	29.7	29.8	0.1
Paper and paper products.....	399.6	398.6	398.1	396.8	398.5	397.8	397.5	395.9	-1.6
Printing and related support activities.....	505.9	491.3	490.5	492.1	501.4	490.0	488.8	488.8	0.0
Petroleum and coal products.....	115.6	115.7	117.2	115.6	115.2	113.4	114.7	114.9	0.2
Chemicals.....	794.7	776.0	773.4	774.0	794.7	777.7	775.3	773.4	-1.9
Plastics and rubber products.....	616.4	636.9	635.0	635.3	614.8	634.3	633.1	633.7	0.6
Private service-providing.....	89,797	90,190	90,606	90,821	89,230	90,030	90,187	90,252	65
Trade, transportation, and utilities.....	25,111	24,750	24,916	25,235	24,678	24,795	24,819	24,806	-13
Wholesale trade.....	5,593.8	5,603.5	5,626.2	5,635.2	5,568.3	5,593.9	5,603.9	5,608.6	4.7
Durable goods.....	2,782.2	2,784.8	2,794.4	2,800.4	2,775.0	2,781.3	2,785.7	2,790.8	5.1
Nondurable goods.....	1,989.9	1,976.1	1,986.4	1,989.2	1,975.4	1,973.2	1,976.3	1,974.3	-2.0
Electronic markets and agents and brokers.....	821.7	842.6	845.4	845.6	817.9	839.4	841.9	843.5	1.6
Retail trade.....	14,736.4	14,351.2	14,483.0	14,783.8	14,374.5	14,444.9	14,457.9	14,429.8	-28.1
Motor vehicle and parts dealers <sup>1</sup> .....	1,616.2	1,654.2	1,654.9	1,649.1	1,620.4	1,640.4	1,647.6	1,652.2	4.6
Automobile dealers.....	1,005.7	1,028.6	1,030.6	1,029.6	1,007.8	1,021.7	1,027.0	1,031.0	4.0
Furniture and home furnishings stores.....	457.0	435.3	449.8	455.8	438.6	440.3	443.4	438.6	-4.8

See footnotes at end of table.

**ESTABLISHMENT DATA**

**Table B-1. Employees on nonfarm payrolls by industry sector and selected industry detail**

— Continued

[In thousands]

Industry	Not seasonally adjusted				Seasonally adjusted				Change from: Oct. 2010- Nov. 2010 <sup>P</sup>
	Nov. 2009	Sept. 2010	Oct. 2010 <sup>P</sup>	Nov. 2010 <sup>P</sup>	Nov. 2009	Sept. 2010	Oct. 2010 <sup>P</sup>	Nov. 2010 <sup>P</sup>	
Retail trade - Continued									
Electronics and appliance stores.....	495.5	479.6	493.9	510.8	477.2	486.5	491.1	491.1	0.0
Building material and garden supply stores...	1,129.6	1,132.4	1,123.8	1,114.6	1,142.9	1,141.1	1,136.5	1,133.3	-3.2
Food and beverage stores.....	2,831.2	2,800.2	2,812.7	2,830.9	2,808.5	2,808.9	2,808.1	2,806.3	-1.8
Health and personal care stores.....	987.4	964.2	969.4	981.5	979.1	971.4	972.4	972.3	-0.1
Gasoline stations.....	822.2	826.6	820.6	815.8	823.5	820.6	818.2	817.2	-1.0
Clothing and clothing accessories stores.....	1,443.7	1,367.9	1,398.2	1,480.4	1,363.1	1,393.8	1,398.4	1,396.8	-1.6
Sporting goods, hobby, book, and music stores.....	637.9	604.4	606.5	625.8	604.7	604.4	600.5	596.9	-3.6
General merchandise stores <sup>1</sup> .....	3,080.3	2,900.3	2,943.1	3,083.9	2,928.1	2,949.9	2,949.9	2,935.4	-14.5
Department stores.....	1,576.8	1,452.1	1,480.0	1,588.1	1,464.3	1,488.9	1,487.9	1,479.1	-8.8
Miscellaneous store retailers.....	789.7	765.5	778.5	785.4	773.3	766.7	770.4	768.6	-1.8
Nonstore retailers.....	445.7	420.6	431.6	449.8	415.1	420.9	421.4	421.1	-0.3
Transportation and warehousing.....	4,221.7	4,244.8	4,254.3	4,265.5	4,175.8	4,204.3	4,205.0	4,216.6	11.6
Air transportation.....	452.5	455.5	455.0	452.5	454.7	453.9	453.8	453.0	-0.8
Rail transportation.....	214.2	222.4	222.6	222.7	213.2	221.3	222.1	222.1	0.0
Water transportation.....	62.3	65.1	65.4	63.8	63.0	63.8	64.7	64.5	-0.2
Truck transportation.....	1,255.5	1,265.4	1,264.6	1,257.1	1,243.3	1,242.1	1,243.1	1,244.5	1.4
Transit and ground passenger transportation.....	432.4	445.5	453.6	453.5	417.5	435.6	436.9	436.5	-0.4
Pipeline transportation.....	41.8	38.9	39.1	39.1	41.6	38.8	38.8	38.8	0.0
Scenic and sightseeing transportation.....	24.2	34.0	29.5	26.2	27.7	28.8	29.1	29.6	0.5
Support activities for transportation.....	542.1	547.1	550.6	546.3	539.0	546.2	546.6	544.1	-2.5
Couriers and messengers.....	550.8	522.4	521.0	543.5	542.7	527.4	523.2	534.4	11.2
Warehousing and storage.....	645.9	648.5	652.9	660.8	633.1	646.4	646.7	649.1	2.4
Utilities.....	559.2	550.2	552.4	550.9	559.8	551.6	552.6	551.4	-1.2
Information.....	2,770	2,707	2,711	2,728	2,762	2,717	2,716	2,717	1
Publishing industries, except Internet.....	773.9	759.3	759.9	762.9	770.7	760.3	759.7	759.2	-0.5
Motion picture and sound recording industries.....	352.5	351.8	348.0	354.2	350.6	355.5	351.6	351.7	0.1
Broadcasting, except Internet.....	297.6	297.3	299.0	300.2	295.5	297.8	298.1	298.1	0.0
Telecommunications.....	962.5	913.5	918.4	923.2	961.4	916.7	919.5	920.6	1.1
Data processing, hosting and related services.....	248.6	243.4	244.3	245.7	248.3	245.1	245.1	245.1	0.0
Other information services.....	135.2	141.4	141.5	142.2	135.4	141.7	141.8	142.2	0.4
Financial activities.....	7,662	7,588	7,586	7,571	7,666	7,582	7,582	7,573	-9
Finance and insurance.....	5,699.9	5,639.8	5,648.4	5,647.9	5,699.6	5,649.0	5,649.2	5,645.7	-3.5
Monetary authorities - central bank.....	21.0	21.4	21.3	21.6	21.1	21.4	21.4	21.6	0.2
Credit intermediation and related activities <sup>1</sup> .....	2,569.4	2,563.7	2,573.8	2,571.2	2,573.1	2,570.3	2,575.1	2,573.7	-1.4
Depository credit intermediation <sup>1</sup> .....	1,749.3	1,756.3	1,764.5	1,763.2	1,750.9	1,760.1	1,765.8	1,764.8	-1.0
Commercial banking.....	1,309.8	1,317.0	1,322.9	1,320.9	1,311.4	1,319.0	1,323.4	1,322.3	-1.1
Securities, commodity contracts, investments.....	797.1	799.6	796.9	799.0	795.1	800.8	796.5	797.4	0.9
Insurance carriers and related activities.....	2,226.0	2,170.4	2,171.0	2,170.8	2,223.7	2,171.6	2,171.2	2,167.8	-3.4
Funds, trusts, and other financial vehicles.....	86.4	84.7	85.4	85.3	86.6	84.9	85.0	85.2	0.2
Real estate and rental and leasing.....	1,961.6	1,948.0	1,938.0	1,923.0	1,966.8	1,933.3	1,932.4	1,927.5	-4.9
Real estate.....	1,406.1	1,387.6	1,383.7	1,378.4	1,405.6	1,379.7	1,378.8	1,376.5	-2.3
Rental and leasing services.....	530.2	536.5	530.0	520.3	535.7	529.7	529.2	526.7	-2.5
Lessors of nonfinancial intangible assets.....	25.3	23.9	24.3	24.3	25.5	23.9	24.4	24.3	-0.1
Professional and business services.....	16,621	16,843	16,994	17,023	16,466	16,758	16,808	16,861	53
Professional and technical services <sup>1</sup> .....	7,423.3	7,337.7	7,403.4	7,431.9	7,433.3	7,420.4	7,429.8	7,437.2	7.4
Legal services.....	1,106.5	1,104.3	1,107.6	1,106.6	1,106.2	1,107.6	1,107.2	1,106.1	-1.1
Accounting and bookkeeping services.....	861.1	806.0	812.9	821.8	918.4	882.9	877.8	876.2	-1.6
Architectural and engineering services.....	1,297.2	1,279.9	1,284.3	1,286.1	1,289.6	1,276.9	1,275.6	1,278.2	2.6
Computer systems design and related services.....	1,441.6	1,460.8	1,480.9	1,484.0	1,431.3	1,463.1	1,472.4	1,473.3	0.9
Management and technical consulting services.....	1,002.5	990.7	1,005.6	1,012.2	990.6	992.6	996.3	1,000.0	3.7
Management of companies and enterprises.....	1,826.6	1,836.3	1,834.2	1,834.3	1,824.9	1,835.5	1,833.3	1,833.1	-0.2
Administrative and waste services.....	7,371.0	7,668.6	7,756.4	7,757.2	7,207.3	7,501.9	7,544.5	7,591.1	46.6

See footnotes at end of table.

**ESTABLISHMENT DATA**

**Table B-1. Employees on nonfarm payrolls by industry sector and selected industry detail**

— Continued

[In thousands]

Industry	Not seasonally adjusted				Seasonally adjusted				Change from: Oct. 2010-Nov. 2010 <sup>p</sup>
	Nov. 2009	Sept. 2010	Oct. 2010 <sup>p</sup>	Nov. 2010 <sup>p</sup>	Nov. 2009	Sept. 2010	Oct. 2010 <sup>p</sup>	Nov. 2010 <sup>p</sup>	
Administrative and waste services - Continued									
Administrative and support services <sup>1</sup> .....	7,017.9	7,307.8	7,397.5	7,401.1	6,856.5	7,145.5	7,189.2	7,236.6	47.4
Employment services <sup>1</sup> .....	2,643.2	2,904.5	2,983.1	3,022.0	2,515.8	2,821.5	2,851.6	2,896.4	44.8
Temporary help services.....	1,966.2	2,210.9	2,293.0	2,322.3	1,861.3	2,143.8	2,178.5	2,218.0	39.5
Business support services.....	827.7	788.5	810.1	819.3	813.4	798.2	800.9	801.6	0.7
Services to buildings and dwellings.....	1,743.6	1,804.7	1,783.5	1,740.5	1,726.8	1,732.0	1,730.8	1,725.5	-5.3
Waste management and remediation services.....	353.1	360.8	358.9	356.1	350.8	356.4	355.3	354.5	-0.8
Education and health services.....	19,543	19,542	19,859	19,945	19,313	19,625	19,689	19,719	30
Educational services.....	3,275.8	3,091.9	3,322.1	3,354.2	3,092.7	3,146.6	3,170.9	3,177.1	6.2
Health care and social assistance.....	16,267.4	16,450.5	16,537.2	16,591.2	16,220.7	16,478.5	16,518.4	16,541.5	23.1
Health care <sup>3</sup> .....	13,651.7	13,804.2	13,859.5	13,900.5	13,622.9	13,822.2	13,851.1	13,870.3	19.2
Ambulatory health care services <sup>1</sup> .....	5,844.7	5,949.5	5,986.6	6,003.0	5,830.3	5,962.0	5,979.4	5,986.8	7.4
Offices of physicians.....	2,304.9	2,319.9	2,332.3	2,335.6	2,298.1	2,326.0	2,329.2	2,328.7	-0.5
Outpatient care centers.....	546.1	556.1	560.8	562.2	544.4	557.0	559.9	560.6	0.7
Home health care services.....	1,049.5	1,078.1	1,085.4	1,093.0	1,046.1	1,079.8	1,083.8	1,087.9	4.1
Hospitals.....	4,697.6	4,719.4	4,729.1	4,743.8	4,690.4	4,722.9	4,728.6	4,736.6	8.0
Nursing and residential care facilities <sup>1</sup> .....	3,109.4	3,135.3	3,143.8	3,153.7	3,102.2	3,137.3	3,143.1	3,146.9	3.8
Nursing care facilities.....	1,655.3	1,662.0	1,664.0	1,671.6	1,649.7	1,661.3	1,663.7	1,666.1	2.4
Social assistance <sup>1</sup> .....	2,615.7	2,646.3	2,677.7	2,690.7	2,597.8	2,656.3	2,667.3	2,671.2	3.9
Child day care services.....	874.8	867.1	881.1	886.5	859.6	868.0	870.4	870.8	0.4
Leisure and hospitality.....	12,788	13,391	13,129	12,930	13,024	13,173	13,163	13,174	11
Arts, entertainment, and recreation.....	1,755.8	2,001.4	1,855.9	1,748.9	1,895.7	1,917.4	1,894.7	1,893.9	-0.8
Performing arts and spectator sports.....	381.1	450.2	410.7	402.7	393.2	423.6	407.9	417.0	9.1
Museums, historical sites, zoos, and parks....	124.7	131.1	127.7	123.1	129.1	128.4	127.4	127.7	0.3
Amusements, gambling, and recreation.....	1,250.0	1,420.1	1,317.5	1,223.1	1,373.4	1,365.4	1,359.4	1,349.2	-10.2
Accommodation and food services.....	11,032.3	11,389.6	11,273.2	11,180.6	11,128.2	11,255.9	11,268.7	11,279.9	11.2
Accommodation.....	1,691.1	1,799.3	1,741.4	1,703.8	1,735.0	1,761.6	1,752.0	1,751.5	-0.5
Food services and drinking places.....	9,341.2	9,590.3	9,531.8	9,476.8	9,393.2	9,494.3	9,516.7	9,528.4	11.7
Other services.....	5,302	5,369	5,411	5,389	5,321	5,380	5,410	5,402	-8
Repair and maintenance.....	1,137.2	1,155.9	1,159.1	1,149.1	1,141.3	1,152.7	1,157.2	1,153.5	-3.7
Personal and laundry services.....	1,268.0	1,269.8	1,278.6	1,276.1	1,270.8	1,271.8	1,281.6	1,278.7	-2.9
Membership associations and organizations....	2,896.5	2,942.9	2,972.9	2,964.2	2,908.7	2,955.1	2,970.8	2,970.2	-0.6
Government.....	22,995	22,074	22,635	22,751	22,507	22,260	22,272	22,261	-11
Federal.....	2,825.0	2,853.0	2,840.0	2,831.0	2,833.0	2,843.0	2,835.0	2,837.0	2.0
Federal, except U.S. Postal Service.....	2,143.6	2,206.9	2,189.7	2,188.1	2,150.4	2,194.2	2,190.1	2,194.9	4.8
U.S. Postal Service.....	680.9	646.5	650.4	642.8	682.8	648.4	644.9	641.7	-3.2
State government.....	5,348.0	5,178.0	5,333.0	5,358.0	5,172.0	5,170.0	5,182.0	5,183.0	1.0
State government education.....	2,565.3	2,426.1	2,587.4	2,614.0	2,378.0	2,415.4	2,427.8	2,428.0	0.2
State government, excluding education.....	2,782.4	2,752.3	2,745.9	2,743.7	2,793.6	2,754.9	2,754.1	2,754.6	0.5
Local government.....	14,822.0	14,043.0	14,462.0	14,562.0	14,502.0	14,247.0	14,255.0	14,241.0	-14.0
Local government education.....	8,419.8	7,686.5	8,156.9	8,272.9	8,054.1	7,893.4	7,914.6	7,910.4	-4.2
Local government, excluding education.....	6,402.3	6,356.3	6,305.3	6,289.1	6,448.0	6,353.4	6,340.5	6,330.5	-10.0

1 Includes other industries, not shown separately.

2 Includes motor vehicles, motor vehicle bodies and trailers, and motor vehicle parts.

3 Includes ambulatory health care services, hospitals, and nursing and residential care facilities.

p Preliminary

**ESTABLISHMENT DATA**

**Table B-2. Average weekly hours and overtime of all employees on private nonfarm payrolls by industry sector, seasonally adjusted**

Industry	Nov. 2009	Sept. 2010	Oct. 2010 <sup>p</sup>	Nov. 2010 <sup>p</sup>
<b>AVERAGE WEEKLY HOURS</b>				
Total private.....	33.9	34.2	34.3	34.3
Goods-producing.....	38.9	39.6	39.7	39.7
Mining and logging.....	42.2	43.2	43.1	42.9
Construction.....	37.2	37.8	38.0	37.9
Manufacturing.....	39.6	40.2	40.3	40.3
Durable goods.....	39.8	40.4	40.5	40.6
Nondurable goods.....	39.2	39.8	39.9	39.8
Private service-providing.....	32.8	33.2	33.3	33.3
Trade, transportation, and utilities.....	34.0	34.2	34.4	34.4
Wholesale trade.....	37.7	38.5	38.5	38.5
Retail trade.....	31.2	31.1	31.3	31.3
Transportation and warehousing.....	38.0	38.4	38.7	38.8
Utilities.....	41.0	41.4	42.0	41.7
Information.....	36.5	36.8	36.8	36.9
Financial activities.....	36.7	37.1	37.1	37.2
Professional and business services.....	35.1	35.6	35.7	35.7
Education and health services.....	32.7	33.0	33.0	33.0
Leisure and hospitality.....	25.5	25.8	25.9	25.9
Other services.....	31.3	32.0	31.9	31.9
<b>AVERAGE OVERTIME HOURS</b>				
Manufacturing.....	2.6	3.0	3.1	3.1
Durable goods.....	2.5	2.9	2.9	3.1
Nondurable goods.....	2.8	3.2	3.3	3.1

p Preliminary



**ESTABLISHMENT DATA**

**Table B-3. Average hourly and weekly earnings of all employees on private nonfarm payrolls by industry sector, seasonally adjusted**

Industry	Average hourly earnings				Average weekly earnings			
	Nov. 2009	Sept. 2010	Oct. 2010 <sup>p</sup>	Nov. 2010 <sup>p</sup>	Nov. 2009	Sept. 2010	Oct. 2010 <sup>p</sup>	Nov. 2010 <sup>p</sup>
Total private.....	\$22.39	\$22.68	\$22.74	\$22.75	\$ 759.02	\$ 775.66	\$ 779.98	\$ 780.33
Goods-producing.....	23.89	24.13	24.17	24.14	929.32	955.55	959.55	958.36
Mining and logging.....	26.84	27.91	27.72	27.36	1,132.65	1,205.71	1,194.73	1,173.74
Construction.....	25.07	25.21	25.26	25.30	932.60	952.94	959.88	958.87
Manufacturing.....	23.16	23.37	23.42	23.39	917.14	939.47	943.83	942.62
Durable goods.....	24.73	24.84	24.87	24.86	984.25	1,003.54	1,007.24	1,009.32
Nondurable goods.....	20.67	20.99	21.06	20.98	810.26	835.40	840.29	835.00
Private service-providing.....	22.03	22.34	22.39	22.42	722.58	741.69	745.59	746.59
Trade, transportation, and utilities.....	19.52	19.87	19.90	19.91	663.68	679.55	684.56	684.90
Wholesale trade.....	25.86	26.31	26.38	26.45	974.92	1,012.94	1,015.63	1,018.33
Retail trade.....	15.46	15.63	15.66	15.67	482.35	486.09	490.16	490.47
Transportation and warehousing.....	20.66	21.18	21.18	21.18	785.08	813.31	819.67	821.78
Utilities.....	33.08	33.11	33.21	32.90	1,356.28	1,370.75	1,394.82	1,371.93
Information.....	29.94	30.98	31.18	31.36	1,092.81	1,140.06	1,147.42	1,157.18
Financial activities.....	26.77	27.21	27.27	27.28	982.46	1,009.49	1,011.72	1,014.82
Professional and business services.....	27.11	27.39	27.45	27.50	951.56	975.08	979.97	981.75
Education and health services.....	22.53	22.97	23.05	23.02	736.73	758.01	760.65	759.66
Leisure and hospitality.....	13.14	13.08	13.10	13.09	335.07	337.46	339.29	339.03
Other services.....	20.02	19.92	20.05	20.17	626.63	637.44	639.60	643.42

p Preliminary

**ESTABLISHMENT DATA**

**Table B-4. Indexes of aggregate weekly hours and payrolls for all employees on private nonfarm payrolls by industry sector, seasonally adjusted**

[2007=100]

Industry	Index of aggregate weekly hours <sup>1</sup>					Index of aggregate weekly payrolls <sup>2</sup>				
	Nov. 2009	Sept. 2010	Oct. 2010 <sup>P</sup>	Nov. 2010 <sup>P</sup>	Percent change from: Oct. 2010 - Nov. 2010 <sup>P</sup>	Nov. 2009	Sept. 2010	Oct. 2010 <sup>P</sup>	Nov. 2010 <sup>P</sup>	Percent change from: Oct. 2010 - Nov. 2010 <sup>P</sup>
Total private.....	91.1	92.6	93.0	93.1	0.1	97.2	100.2	100.9	101.0	0.1
Goods-producing.....	79.6	81.4	81.6	81.5	-0.1	85.9	88.8	89.1	89.0	-0.1
Mining and logging.....	89.6	101.7	102.9	102.9	0.0	96.6	113.9	114.5	113.0	-1.3
Construction.....	73.5	73.2	73.6	73.3	-0.4	80.0	80.2	80.8	80.6	-0.2
Manufacturing.....	82.3	84.4	84.5	84.4	-0.1	88.6	91.7	92.1	91.9	-0.2
Durable goods.....	79.0	81.7	81.9	82.0	0.1	86.7	90.2	90.4	90.6	0.2
Nondurable goods.....	88.1	89.1	89.2	88.8	-0.4	92.4	94.9	95.3	94.6	-0.7
Private service-providing.....	94.0	96.0	96.5	96.5	0.0	100.3	103.9	104.6	104.8	0.2
Trade, transportation, and utilities.....	91.2	92.2	92.8	92.7	-0.1	95.8	98.6	99.4	99.4	0.0
Wholesale trade.....	91.6	94.0	94.1	94.2	0.1	98.9	103.2	103.6	104.0	0.4
Retail trade.....	91.1	91.2	91.9	91.7	-0.2	93.1	94.3	95.1	95.0	-0.1
Transportation and warehousing.....	90.8	92.4	93.1	93.6	0.5	95.2	99.3	100.1	100.6	0.5
Utilities.....	99.3	98.8	100.4	99.5	-0.9	108.5	108.1	110.2	108.1	-1.9
Information.....	92.1	91.3	91.3	91.6	0.3	98.1	100.7	101.3	102.2	0.9
Financial activities.....	92.7	92.7	92.7	92.8	0.1	96.9	98.4	98.7	98.8	0.1
Professional and business services.....	90.9	93.8	94.4	94.7	0.3	99.8	104.1	105.0	105.5	0.5
Education and health services.....	102.8	105.4	105.7	105.9	0.2	108.5	113.4	114.2	114.2	0.0
Leisure and hospitality.....	94.8	97.0	97.3	97.4	0.1	100.5	102.3	102.8	102.8	0.0
Other services.....	92.3	95.4	95.6	95.5	-0.1	104.8	107.8	108.8	109.3	0.5

1 The indexes of aggregate weekly hours are calculated by dividing the current month's estimates of aggregate hours by the corresponding 2007 annual average aggregate hours. Aggregate hours estimates are the product of estimates of average weekly hours and employment.

2 The indexes of aggregate weekly payrolls are calculated by dividing the current month's estimates of aggregate weekly payrolls by the corresponding 2007 annual average aggregate weekly payrolls. Aggregate payrolls estimates are the product of estimates of average hourly earnings, average weekly hours, and employment.

p Preliminary

**ESTABLISHMENT DATA**

**Table B-5. Employment of women on nonfarm payrolls by industry sector, seasonally adjusted**

Industry	Women employees (in thousands)				Percent of all employees			
	Nov. 2009	Sept. 2010	Oct. 2010 <sup>p</sup>	Nov. 2010 <sup>p</sup>	Nov. 2009	Sept. 2010	Oct. 2010 <sup>p</sup>	Nov. 2010 <sup>p</sup>
Total nonfarm.....	64,736	64,659	64,725	64,711	49.9	49.6	49.6	49.6
Total private.....	51,896	52,005	52,067	52,083	48.4	48.1	48.1	48.1
Goods-producing.....	4,163	4,128	4,111	4,107	23.2	22.9	22.8	22.8
Mining and logging.....	98	103	103	104	14.5	13.8	13.6	13.6
Construction.....	765	728	725	724	13.3	13.0	12.9	12.9
Manufacturing.....	3,300	3,297	3,283	3,279	28.6	28.2	28.2	28.2
Durable goods.....	1,744	1,744	1,733	1,731	24.7	24.3	24.1	24.1
Nondurable goods.....	1,556	1,553	1,550	1,548	34.5	34.6	34.6	34.6
Private service-providing.....	47,733	47,877	47,956	47,976	53.5	53.2	53.2	53.2
Trade, transportation, and utilities.....	10,089	10,023	10,027	10,000	40.9	40.4	40.4	40.3
Wholesale trade.....	1,685.9	1,681.8	1,686.5	1,690.0	30.3	30.1	30.1	30.1
Retail trade.....	7,260.6	7,207.6	7,211.0	7,188.1	50.5	49.9	49.9	49.8
Transportation and warehousing.....	1,002.7	1,001.0	997.9	990.7	24.0	23.8	23.7	23.5
Utilities.....	139.6	132.3	131.7	130.9	24.9	24.0	23.8	23.7
Information.....	1,139	1,105	1,104	1,109	41.2	40.7	40.6	40.8
Financial activities.....	4,546	4,458	4,451	4,444	59.3	58.8	58.7	58.7
Professional and business services.....	7,390	7,447	7,469	7,489	44.9	44.4	44.4	44.4
Education and health services.....	14,940	15,134	15,179	15,201	77.4	77.1	77.1	77.1
Leisure and hospitality.....	6,828	6,880	6,880	6,888	52.4	52.2	52.3	52.3
Other services.....	2,801	2,830	2,846	2,845	52.6	52.6	52.6	52.7
Government.....	12,840	12,654	12,658	12,628	57.0	56.8	56.8	56.7

p Preliminary

**ESTABLISHMENT DATA**

**Table B-6. Employment of production and nonsupervisory employees on private nonfarm payrolls by industry sector, seasonally adjusted<sup>1</sup>**

[In thousands]

Industry	Nov. 2009	Sept. 2010	Oct. 2010 <sup>p</sup>	Nov. 2010 <sup>p</sup>
Total private.....	88,302	89,062	89,203	89,261
Goods-producing.....	12,936	12,986	12,993	12,993
Mining and logging.....	491	559	568	572
Construction.....	4,337	4,247	4,259	4,263
Manufacturing.....	8,108	8,180	8,166	8,158
Durable goods.....	4,816	4,920	4,913	4,915
Nondurable goods.....	3,292	3,260	3,253	3,243
Private service-providing.....	75,366	76,076	76,210	76,268
Trade, transportation, and utilities.....	20,876	20,972	20,990	20,971
Wholesale trade.....	4,481.3	4,479.9	4,484.0	4,487.2
Retail trade.....	12,328.8	12,425.0	12,442.3	12,417.4
Transportation and warehousing.....	3,618.5	3,629.6	3,626.0	3,630.8
Utilities.....	446.9	437.3	437.5	436.0
Information.....	2,200	2,183	2,183	2,183
Financial activities.....	5,932	5,841	5,824	5,811
Professional and business services.....	13,446	13,746	13,793	13,853
Education and health services.....	16,945	17,204	17,274	17,303
Leisure and hospitality.....	11,516	11,629	11,616	11,620
Other services.....	4,451	4,501	4,530	4,527

<sup>1</sup> Data relate to production employees in mining and logging and manufacturing, construction employees in construction, and nonsupervisory employees in the service-providing industries. These groups account for approximately four-fifths of the total employment on private nonfarm payrolls.

<sup>p</sup> Preliminary

**ESTABLISHMENT DATA**

**Table B-7. Average weekly hours and overtime of production and nonsupervisory employees on private nonfarm payrolls by industry sector, seasonally adjusted<sup>1</sup>**

Industry	Nov. 2009	Sept. 2010	Oct. 2010 <sup>p</sup>	Nov. 2010 <sup>p</sup>
<b>AVERAGE WEEKLY HOURS</b>				
Total private.....	33.2	33.5	33.6	33.5
Goods-producing.....	39.7	40.7	40.6	40.5
Mining and logging.....	43.0	44.6	44.3	44.6
Construction.....	37.8	39.0	38.8	38.6
Manufacturing.....	40.5	41.2	41.2	41.3
Durable goods.....	40.6	41.4	41.5	41.6
Nondurable goods.....	40.3	41.0	40.9	40.8
Private service-providing.....	32.1	32.3	32.4	32.3
Trade, transportation, and utilities.....	33.0	33.4	33.5	33.4
Wholesale trade.....	37.6	38.2	38.1	38.0
Retail trade.....	30.0	30.1	30.2	30.2
Transportation and warehousing.....	36.4	37.6	37.7	37.8
Utilities.....	41.6	42.2	43.0	42.7
Information.....	36.7	36.2	36.4	36.5
Financial activities.....	36.1	36.3	36.3	36.3
Professional and business services.....	34.8	35.2	35.3	35.2
Education and health services.....	32.2	32.2	32.3	32.2
Leisure and hospitality.....	24.9	24.7	24.9	24.9
Other services.....	30.5	30.9	30.9	30.8
<b>AVERAGE OVERTIME HOURS</b>				
Manufacturing.....	3.4	3.9	3.9	4.0
Durable goods.....	3.2	3.9	3.9	4.1
Nondurable goods.....	3.6	3.9	4.0	3.9

<sup>1</sup> Data relate to production employees in mining and logging and manufacturing, construction employees in construction, and nonsupervisory employees in the service-providing industries. These groups account for approximately four-fifths of the total employment on private nonfarm payrolls.

p Preliminary

**ESTABLISHMENT DATA**

**Table B-8. Average hourly and weekly earnings of production and nonsupervisory employees on private nonfarm payrolls by industry sector, seasonally adjusted<sup>1</sup>**

Industry	Average hourly earnings				Average weekly earnings			
	Nov. 2009	Sept. 2010	Oct. 2010 <sup>p</sup>	Nov. 2010 <sup>p</sup>	Nov. 2009	Sept. 2010	Oct. 2010 <sup>p</sup>	Nov. 2010 <sup>p</sup>
Total private.....	\$18.80	\$19.11	\$19.19	\$19.19	\$ 624.16	\$ 640.19	\$ 644.78	\$ 642.87
Goods-producing.....	20.02	20.34	20.41	20.43	794.79	827.84	828.65	827.42
Mining and logging.....	23.28	24.11	23.81	23.70	1,001.04	1,075.31	1,054.78	1,057.02
Construction.....	22.89	23.24	23.41	23.48	865.24	906.36	908.31	906.33
Manufacturing.....	18.38	18.64	18.68	18.70	744.39	767.97	769.62	772.31
Durable goods.....	19.55	19.81	19.84	19.89	793.73	820.13	823.36	827.42
Nondurable goods.....	16.66	16.86	16.90	16.85	671.40	691.26	691.21	687.48
Private service-providing.....	18.54	18.84	18.93	18.92	595.13	608.53	613.33	611.12
Trade, transportation, and utilities.....	16.65	16.96	17.05	17.04	549.45	566.46	571.18	569.14
Wholesale trade.....	21.16	21.66	21.86	21.80	795.62	827.41	832.87	828.40
Retail trade.....	13.12	13.32	13.38	13.41	393.60	400.93	404.08	404.98
Transportation and warehousing.....	18.94	19.19	19.23	19.19	689.42	721.54	724.97	725.38
Utilities.....	29.92	30.63	30.79	30.86	1,244.67	1,292.59	1,323.97	1,317.72
Information.....	25.68	26.00	26.13	26.20	942.46	941.20	951.13	956.30
Financial activities.....	21.07	21.40	21.62	21.61	760.63	776.82	784.81	784.44
Professional and business services.....	22.50	22.93	22.99	23.00	783.00	807.14	811.55	809.60
Education and health services.....	19.73	20.09	20.17	20.11	635.31	646.90	651.49	647.54
Leisure and hospitality.....	11.28	11.26	11.29	11.30	280.87	278.12	281.12	281.37
Other services.....	16.81	16.86	16.91	16.97	512.71	520.97	522.52	522.68

<sup>1</sup> Data relate to production employees in mining and logging and manufacturing, construction employees in construction, and nonsupervisory employees in the service-providing industries. These groups account for approximately four-fifths of the total employment on private nonfarm payrolls.

p Preliminary

**ESTABLISHMENT DATA**

**Table B-9. Indexes of aggregate weekly hours and payrolls for production and nonsupervisory employees on private nonfarm payrolls by industry sector, seasonally adjusted<sup>1</sup>**

[2002=100]

Industry	Index of aggregate weekly hours <sup>2</sup>					Index of aggregate weekly payrolls <sup>3</sup>				
	Nov. 2009	Sept. 2010	Oct. 2010 <sup>p</sup>	Nov. 2010 <sup>p</sup>	Percent change from: Oct. 2010 - Nov. 2010 <sup>p</sup>	Nov. 2009	Sept. 2010	Oct. 2010 <sup>p</sup>	Nov. 2010 <sup>p</sup>	Percent change from: Oct. 2010 - Nov. 2010 <sup>p</sup>
Total private.....	97.9	99.7	100.1	99.9	-0.2	123.0	127.3	128.4	128.1	-0.2
Goods-producing.....	78.5	80.8	80.6	80.4	-0.2	96.2	100.6	100.8	100.6	-0.2
Mining and logging.....	112.2	132.5	133.7	135.6	1.4	151.9	185.8	185.2	186.9	0.9
Construction.....	82.1	82.9	82.7	82.4	-0.4	101.5	104.1	104.6	104.5	-0.1
Manufacturing.....	75.4	77.3	77.2	77.3	0.1	90.6	94.3	94.3	94.6	0.3
Durable goods.....	73.5	76.5	76.6	76.8	0.3	89.7	94.6	94.9	95.4	0.5
Nondurable goods.....	78.2	78.8	78.4	78.0	-0.5	92.0	93.8	93.6	92.8	-0.9
Private service-providing.....	103.4	105.1	105.6	105.3	-0.3	131.5	135.7	137.0	136.6	-0.3
Trade, transportation, and utilities.....	96.0	97.7	98.0	97.6	-0.4	114.1	118.1	119.2	118.7	-0.4
Wholesale trade.....	99.2	100.8	100.6	100.4	-0.2	123.7	128.6	129.6	129.0	-0.5
Retail trade.....	93.6	94.7	95.1	94.9	-0.2	105.3	108.1	109.1	109.1	0.0
Transportation and warehousing.....	99.1	102.7	102.9	103.3	0.4	119.1	125.1	125.5	125.8	0.2
Utilities.....	95.1	94.4	96.2	95.2	-1.0	118.8	120.7	123.7	122.7	-0.8
Information.....	92.2	90.2	90.7	91.0	0.3	117.2	116.1	117.3	118.0	0.6
Financial activities.....	102.5	101.5	101.2	100.9	-0.3	133.5	134.3	135.2	134.9	-0.2
Professional and business services.....	104.9	108.4	109.1	109.3	0.2	140.4	148.0	149.3	149.6	0.2
Education and health services.....	117.7	119.5	120.4	120.2	-0.2	152.7	157.8	159.6	158.9	-0.4
Leisure and hospitality.....	105.1	105.3	106.0	106.1	0.1	134.6	134.6	135.9	136.1	0.1
Other services.....	95.2	97.6	98.2	97.8	-0.4	116.6	119.9	121.0	120.9	-0.1

1 Data relate to production employees in mining and logging and manufacturing, construction employees in construction, and nonsupervisory employees in the service-providing industries. These groups account for approximately four-fifths of the total employment on private nonfarm payrolls.

2 The indexes of aggregate weekly hours are calculated by dividing the current month's estimates of aggregate hours by the corresponding 2002 annual average aggregate hours. Aggregate hours estimates are the product of estimates of average weekly hours and employment.

3 The indexes of aggregate weekly payrolls are calculated by dividing the current month's estimates of aggregate weekly payrolls by the corresponding 2002 annual average aggregate weekly payrolls. Aggregate payrolls estimates are the product of estimates of average hourly earnings, average weekly hours, and employment.

p Preliminary